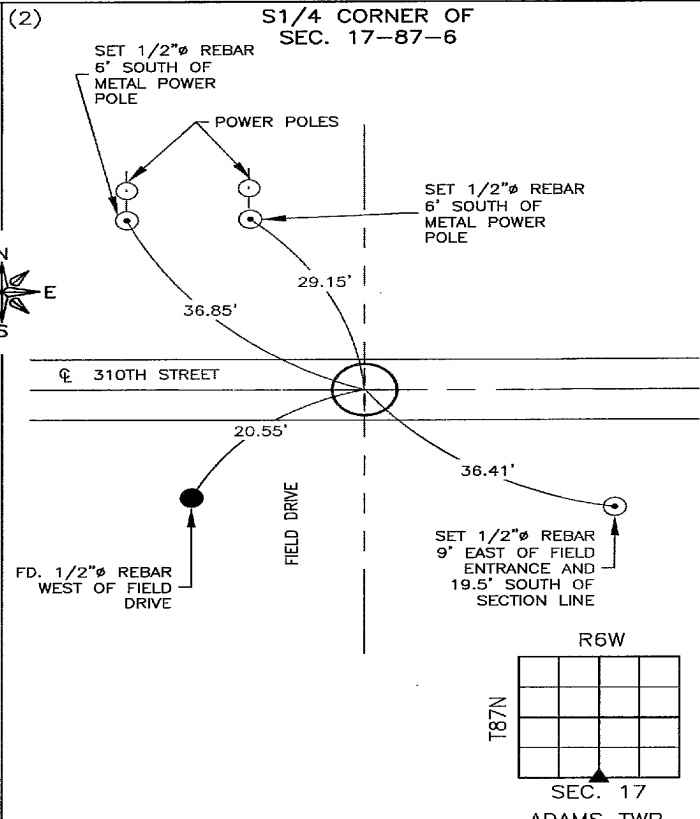
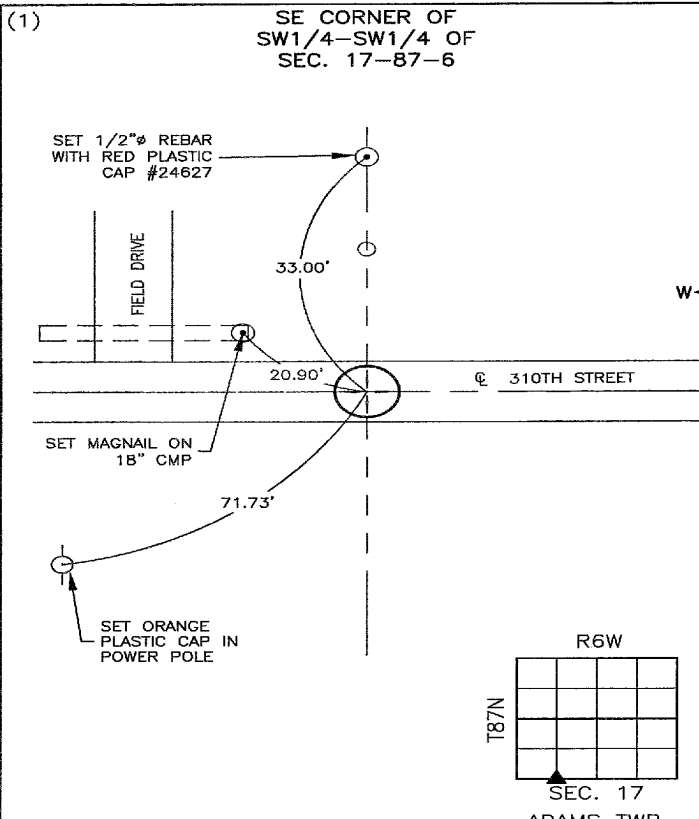


Recorded: 9/10/2024 at 11:49:48.0 AM
 County Recording Fee: \$7.00
 Iowa E-Filing Fee: \$3.13
 Combined Fee: \$10.13
 Revenue Tax: \$0.00
 Delaware County, Iowa
 Daneen Schindler RECORDER
 BK: 2024 PG: 2244

PREPARED BY/RETURN TO: FEHR GRAHAM, 221 EAST MAIN ST., SUITE 301 MANCHESTER, IA 52057 - PH: 563.927.2060

UNITED STATES PUBLIC LAND SURVEY CORNER CERTIFICATE DELAWARE COUNTY, IOWA SECTION 17-T87N-R6W



PREVIOUSLY RECORDED:
 NO PREVIOUS CERTIFICATE ON FILE.

PURPOSE OF CERTIFICATE:
 SET MONUMENT ONLINE BETWEEN SW CORNER AND S1/4 CORNER AND AT INTERSECTION OF A FENCELINE RUNNING NORTH.

MONUMENT DESCRIPTION AND ESTABLISHMENT:
 SET 1/2"Ø REBAR W/ 2"Ø ALUMINUM CAP #24627

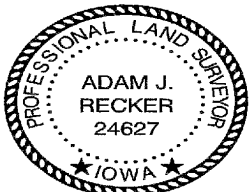
PREVIOUSLY RECORDED:
 IN BK. 2004, PG. 4586 IN COUNTY RECORDER'S OFFICE.

PURPOSE OF CERTIFICATE:
 UPDATING CERTIFICATE DUE TO MISSING TIES FROM PREVIOUS CERTIFICATE

MONUMENT DESCRIPTION AND ESTABLISHMENT:
 FOUND 1/2"Ø REBAR W/ 2"Ø ALUMINUM CAP #16961

CORNERS TO BE INDEXED

CORNER	SECTION	TOWNSHIP	RANGE
(1) S CORNER of SW 1/4	17	87N	6W
(2) S 1/4	17	87N	6W



I hereby certify that this land surveying document was prepared and the related survey work was performed by me or under my direct personal supervision and that I am a duly licensed Land Surveyor under the laws of the State of Iowa.

Adam J. Recker 9-9-2024
 Adam J. Recker, P.L.S. Date
 License Number: 24627
 My license renewal date is December 31, 2025.
 Sheets covered by this seal: THIS SHEET ONLY

FEHR GRAHAM
 ENGINEERING & ENVIRONMENTAL
 © 2024 FEHR GRAHAM

ILLINOIS
 IOWA
 WISCONSIN

G:\C3D\24\24-1048\24-1048 SSC_VW.dwg

	JOB NUMBER: 24-1048
	SHEET NUMBER: 1 of 1