



Daneen Schindler, RECORDER/REGISTRAR
DELAWARE COUNTY IOWA

PREPARED BY: RANDALL L. RATTENBORG 105 WEST MAIN STREET MANCHESTER, IA 52057, 563-927-2434

UNITED STATES PUBLIC LAND SURVEY CORNER CERTIFICATE

Land Survey Monuments situated in Section 12, Township 87 North, Range 5 West of the Fifth Principal Meridian,
Delaware County, Iowa.

Previously recorded in County Recorder's Office in N 1/4 CORNER - BOOK 2017, PAGE 3460

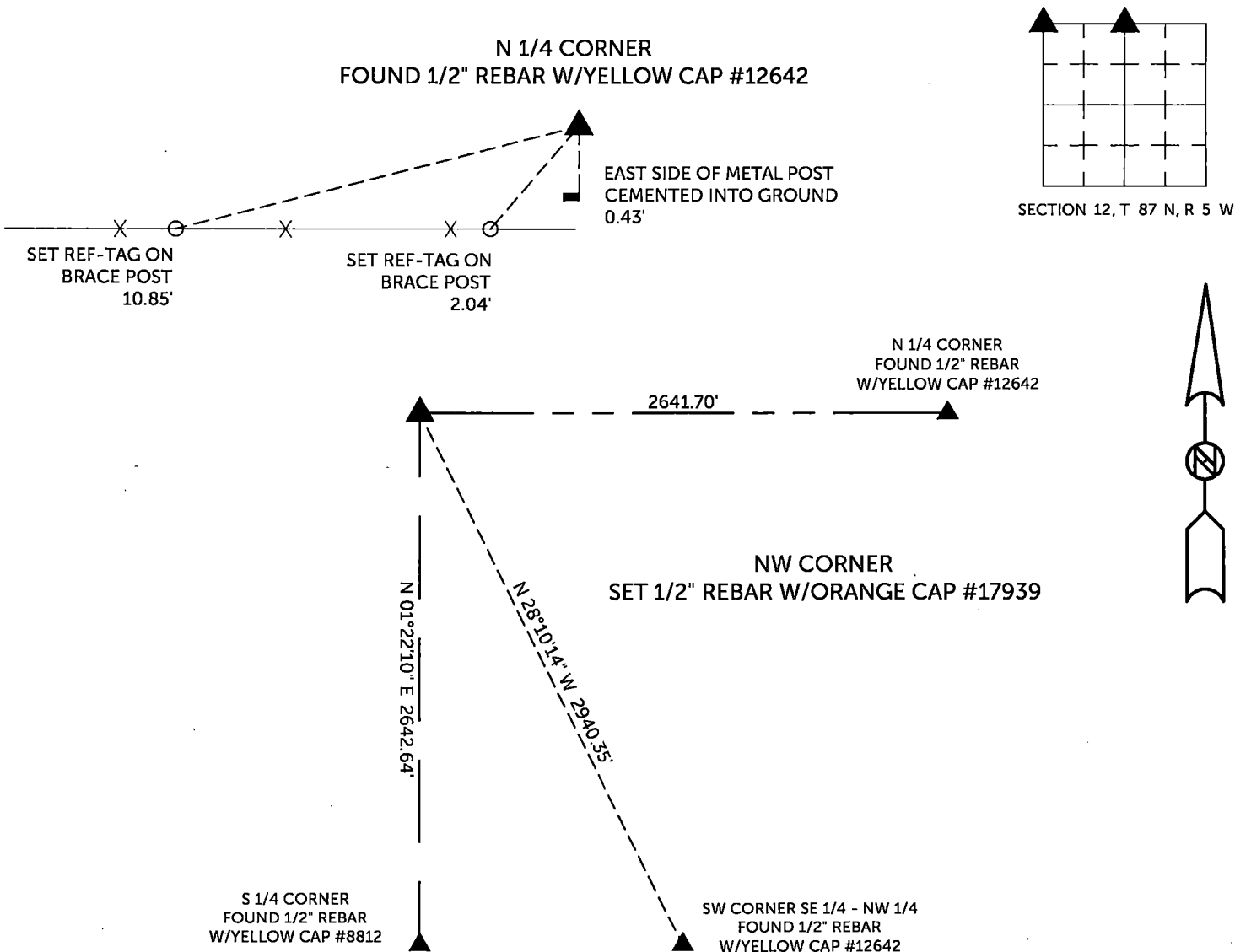
(book, page, document number, etc.)

N 1/4 CORNER, Found 1/2" rebar w/yellow cap #12642. This certificate being issued due to missing tie objects.

NW CORNER, Set 1/2" rebar w/orange cap #17939 using the distance of 1320.85' from the N 1/4 Corner to the NW Corner NE 1/4 - NW 1/4, as shown in Plat recorded in Book 2013, Page 1863, and doubling it over. Also used the distance of 40.04 chains (2642.64') from the W 1/4 Corner, as shown in County Surveyors Record Book 2, Page 35. Set this corner at the intersection of those distances. This fits some old, deteriorated fence evidence.

PLAN VIEW

(Show a minimum of three reference ties to durable physical objects, relevant monuments and physical conditions that will enable recovery of the corner.)

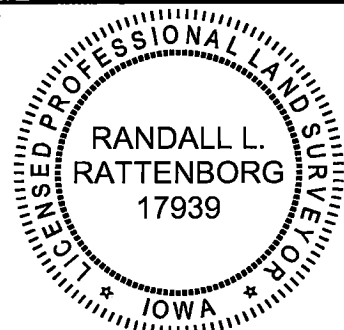


TIES ARE TO PLAT PARCELS 2024-57 & 58
IN SECTION 12, T 87 N, R 5 W

BURRINGTON GROUP, INC. PROJECT NO. 24-093

I HEREBY CERTIFY THAT THIS LAND SURVEYING DOCUMENT WAS PREPARED AND THE RELATED SURVEY WORK WAS PERFORMED BY ME OR UNDER MY DIRECT PERSONAL SUPERVISION AND THAT I AM A DULY LICENSED PROFESSIONAL LAND SURVEYOR UNDER THE LAWS OF THE STATE OF IOWA.

SEAL COVERS THIS SHEET ONLY



[Signature] 8/22/2024
 Randall L. Rattenborg, P.L.S. License #17939 Date
 My license renewal date is December 31, 2025

List Corners to be Indexed:	Section	Township	Range
N 1/4 CORNER	12	T 87N	R 5 W
NW CORNER			

BURRINGTON GROUP, INC.
 Civil Engineering | Land Surveying
 105 W. Main Street Manchester, Iowa 52057