



Book 2024 Page 1960

Document 2024 1960 Type 06 007 Pages 1

Date 8/14/2024 Time 10:01:51AM

Rec Amt \$7.00

Daneen Schindler, RECORDER/REGISTRAR
DELAWARE COUNTY IOWA

Prepared by: SCHNEIDER Land Surveying and Planning, Inc. P.O. Box 128 Farley, Iowa 52046 563-744-3631

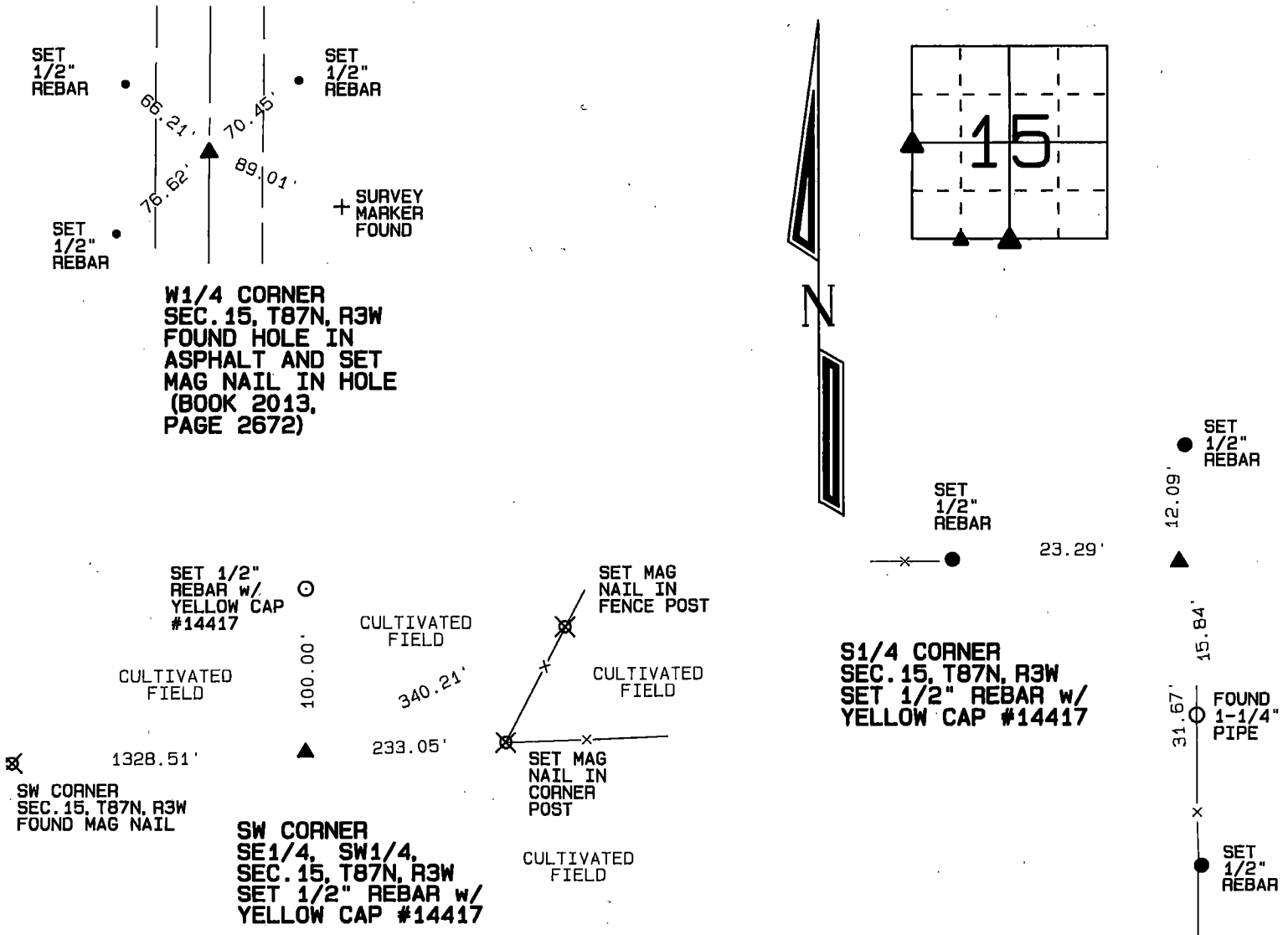
UNITED STATES PUBLIC LAND SURVEY CORNER CERTIFICATE OF

Land Survey Monuments situated in Section 15, Township 87 North, Range 3 West of the Fifth Principal Meridian, Delaware County, Iowa.

Previously recorded W1/4 CORNER - BOOK 2013, PAGE 2672
(BOOK, PAGE / INST. NO. / CABINET, SLIDE)

Monument Description and Remarks: FOUND A SMALL HOLE IN THE ASPHALT AT THE W1/4 CORNER OF SEC. 15, T87N, R3W AS INDICATED ON A SECTION CORNER CERTIFICATE FILED IN SCC BOOK 2013, PAGE 2672. A MAG NAIL WAS PLACED IN THE HOLE. THE S1/4 CORNER OF SEC. 15, T87N, R3W WAS RESET ON THE WEST SIDE OF A CORNER POST 15.84' NORTH OF A FOUND IRON PIPE AS INDICATED ON A SECTION CORNER TIE PREPARED BY WM. ROBINSON #2697 ON AUGUST 4, 1972. THE SW CORNER OF THE SE1/4 OF THE SW1/4 OF SEC. 15, T87N, R3W WAS PLACED AT THE MIDPOINT OF A LINE FROM THE SW CORNER TO THE S1/4 CORNER OF SAID SECTION 15.

PLAN - VIEW



I hereby certify that this land surveying document was prepared and the related survey work was performed by me or under my direct personal supervision and that I am a duly licensed Land Surveyor under the laws of the State of Iowa.

David P. Schneider 8/2/2024
David P. Schneider P.L.S. P14417 Date:
My license renewal date is December 31, 2025.

Pages or sheets covered by this seal: THIS SHEET ONLY

List Corners to be Indexed

Corners	Section	Twp	Range
W1/4 CORNER	15	87N	3W
S1/4 CORNER	15	87N	3W
SW CORNER SE1/4, SW1/4,	15	87N	3W

SCHNEIDER
Land Surveying & Planning, Inc.

P.O. Box 128 Farley, Iowa 52046
Ph. #563-744-3631 daves@yousq.net



JOB NO. 2901PS