



Book 2024 Page 1959

Document 2024 1959 Type 06 007 Pages 1

Date 8/14/2024 Time 9:59:24AM

Rec Amt \$7.00

Daneen Schindler, RECORDER/REGISTRAR
DELAWARE COUNTY IOWA

Prepared by: SCHNEIDER Land Surveying and Planning, Inc. P.O. Box 128 Farley, Iowa 52046 563-744-3631

UNITED STATES PUBLIC LAND SURVEY CORNER CERTIFICATE OF

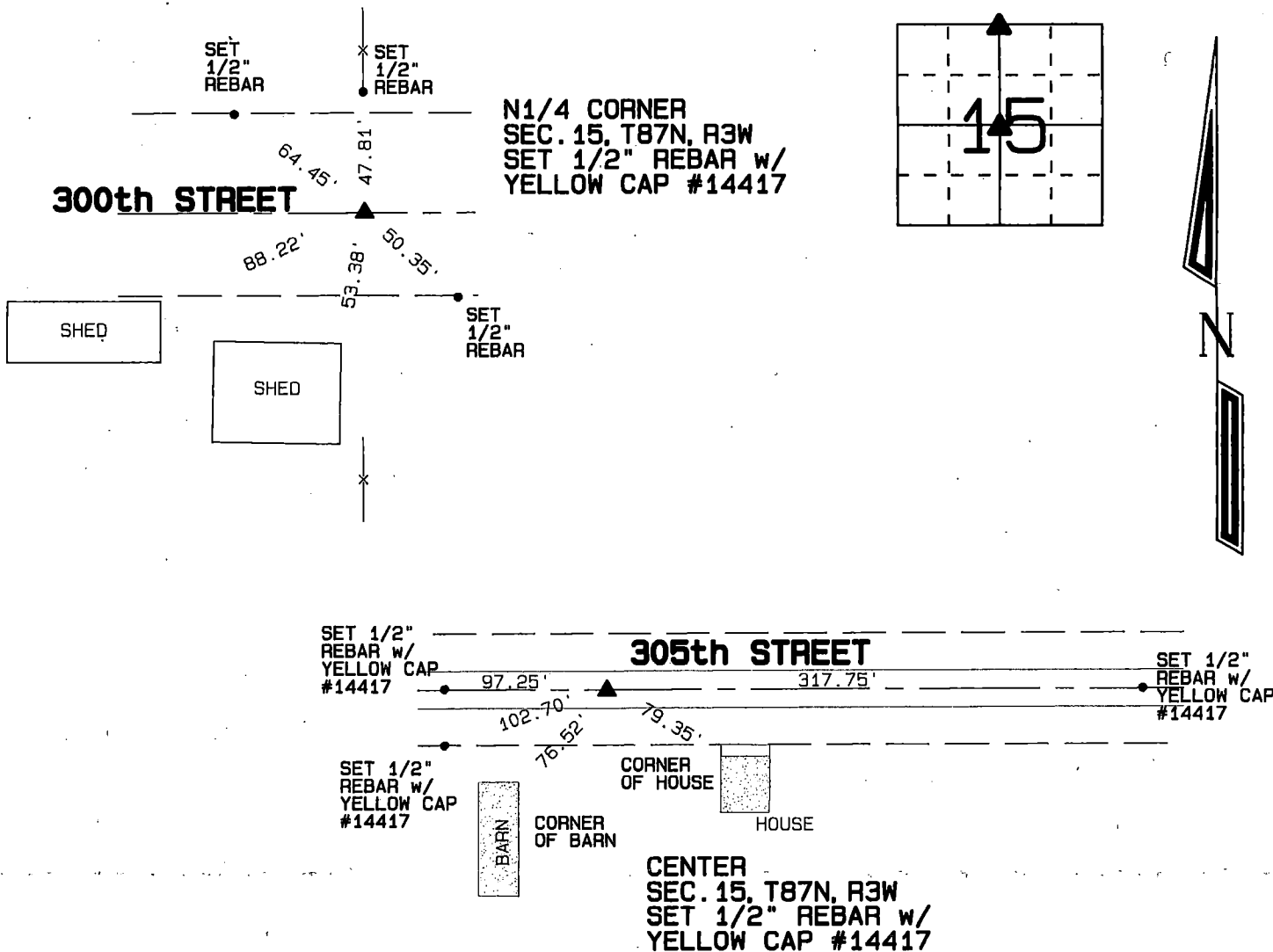
Land Survey Monuments situated in Section 15, Township 87 North, Range 3 West of the Fifth Principal Meridian, Delaware County, Iowa.

Previously recorded N1/4 CORNER - SCC BOOK 1, PAGE 118

(BOOK, PAGE / INST. NO. / CABINET, SLIDE)

Monument Description and Remarks: THE N1/4 CORNER OF SEC. 15, T87N, R3W WAS RESET AS INDICATED ON PREVIOUS SECTION CORNER CERTIFICATE AFTER DIGGING 3.25' DEEP AND FINDING OLD CONDUIT RUNNING EAST AND WEST UNDER THE ROAD. THE CENTER OF SEC. 15, T87N, R3W WAS PLACED ON LINE FROM THE E1/4 CORNER TO THE W1/4 CORNER OF SAID SECTION 15 AND BY DOUBLING THE DISTANCE FROM THE W1/4 CORNER THROUGH THE NE CORNER OF THE NW1/4 OF THE SW1/4 OF SAID SECTION 15.

PLAN - VIEW



I hereby certify that this land surveying document was prepared and the related survey work was performed by me or under my direct personal supervision and that I am a duly licensed Land Surveyor under the laws of the State of Iowa.

David P. Schneider 8/2/2024
David P. Schneider P.L.S. P14417 Date:
My license renewal date is December 31, 2025.

Pages or sheets covered by this seal: THIS SHEET ONLY

SCHNEIDER
Land Surveying & Planning, Inc.

P.O. Box 128 Farley, Iowa 52046
Ph. #563-744-3631 daves@yousq.net



List Corners to be Indexed

Corners	Section	Twp	Range
N1/4 CORNER	15	87N	3W
CENTER	15	87N	3W

JOB NO. 2901PS