



Daneen Schindler, RECORDER/REGISTRAR
DELAWARE COUNTY IOWA

PREPARED BY: RANDALL L. RATTENBORG 105 WEST MAIN STREET MANCHESTER, IA 52057, 563-927-2434

UNITED STATES PUBLIC LAND SURVEY CORNER CERTIFICATE

Land Survey Monuments situated in Section 12, Township 89 North, Range 5 West of the Fifth Principal Meridian,
Delaware County, Iowa.

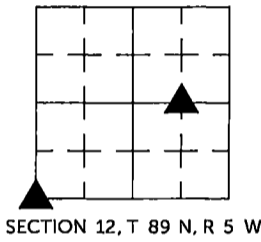
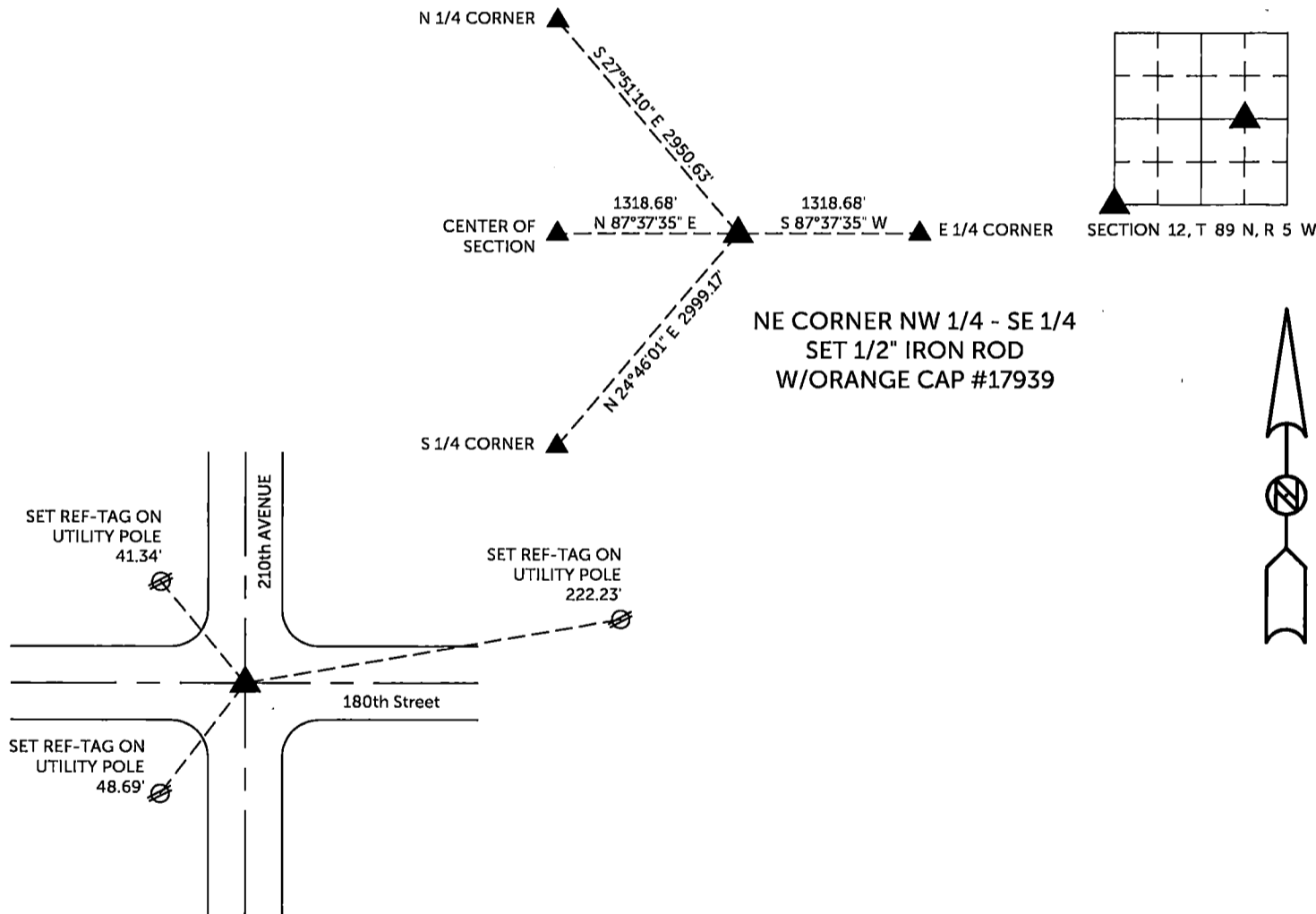
Previously recorded in County Recorder's Office in NOT RECORDED
(book, page, document number, etc.)

SW CORNER, Found 1/2" iron rod w/marred yellow cap as shown in Book 2011, Page 468.

NE CORNER NW 1/4 - SE 1/4, Set 1/2" rebar w/orange cap #17939 at the mathematical location along the north line of the SE 1/4. This location fits the field evidence.

PLAN VIEW

(Show a minimum of three reference ties to durable physical objects, relevant monuments and physical conditions that will enable recovery of the corner.)



SW CORNER

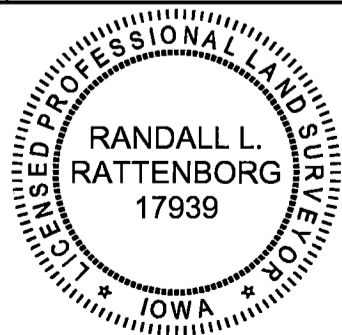
FOUND 1/2" IRON ROD W/MARRED YELLOW CAP

TIES ARE TO PLAT NORTH LINE NW 1/4 - SE 1/4
IN SECTION 12, T 89 N, R 5 W

BURRINGTON GROUP, INC. PROJECT NO.24-097

I HEREBY CERTIFY THAT THIS LAND SURVEYING DOCUMENT
WAS PREPARED AND THE RELATED SURVEY WORK WAS
PERFORMED BY ME OR UNDER MY DIRECT PERSONAL
SUPERVISION AND THAT I AM A DULY LICENSED PROFESSIONAL
LAND SURVEYOR UNDER THE LAWS OF THE STATE OF IOWA.

SEAL COVERS THIS SHEET ONLY



[Signature] 7/31/2024
 Randall L. Rattenborg, P.L.S. License #17939 Date
 My license renewal date is December 31, 2025
 List Corners to be Indexed: Section Township Range

SW CORNER	12	T 89N	R 5 W
NE CORNER NW 1/4 - SE 1/4			

BURRINGTON GROUP, INC.
 Civil Engineering | Land Surveying
 105 W. Main Street Manchester, Iowa 52057