



Book 2024 Page 1578

Document 2024 1578 Type 06 007 Pages 1
Date 7/08/2024 Time 2:19:56PM
Rec Amt \$7.00

Daneen Schindler, RECORDER/REGISTRAR
DELAWARE COUNTY IOWA

PREPARED BY: RANDALL L. RATTENBORG 105 WEST MAIN STREET MANCHESTER, IA 52057, 563-927-2434

UNITED STATES PUBLIC LAND SURVEY CORNER CERTIFICATE

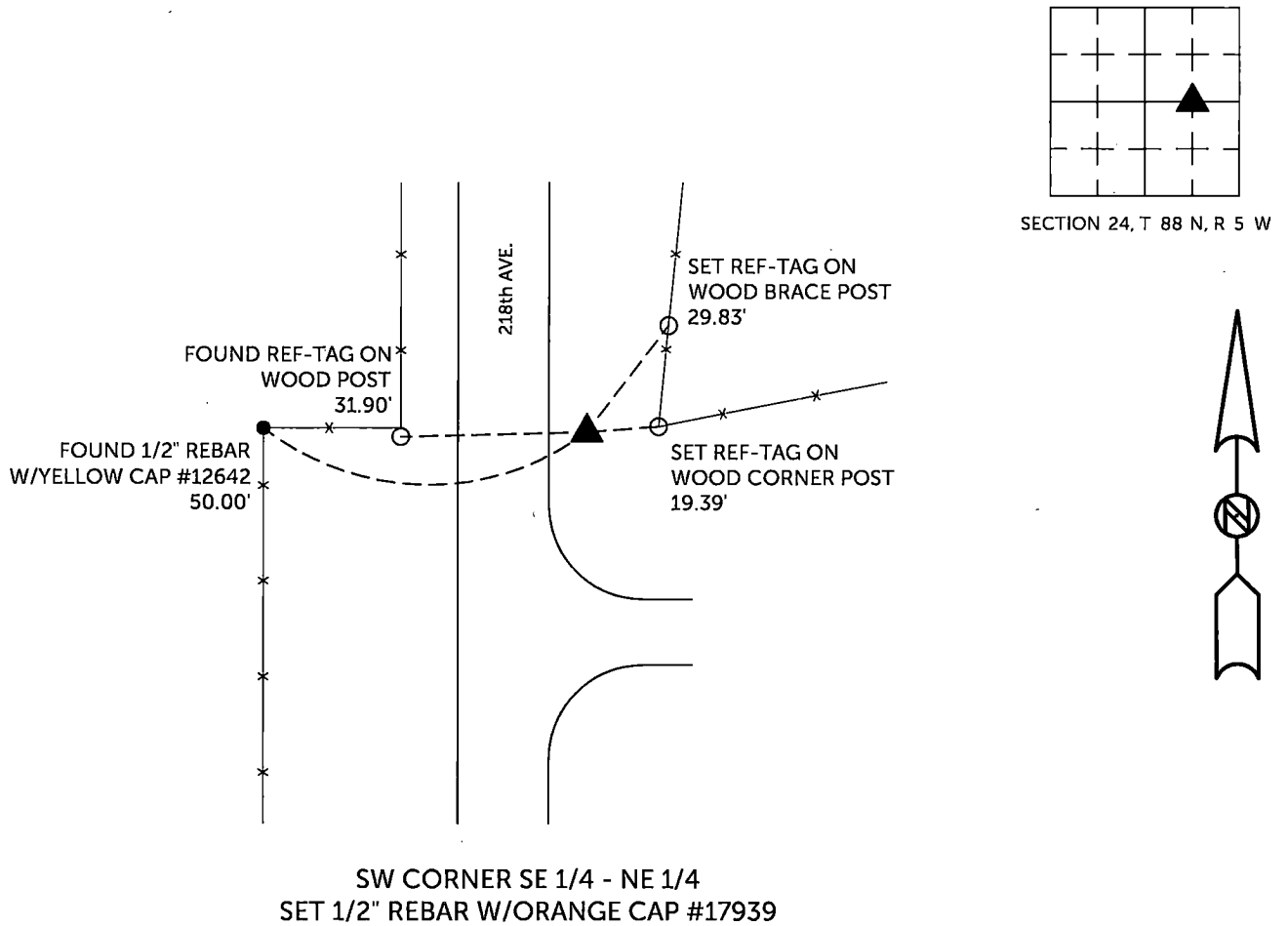
Land Survey Monuments situated in Section 24, Township 88 North, Range 5 West of the Fifth Principal Meridian,
Delaware County, Iowa.

Previously recorded in County Recorder's Office in BOOK 2001, PAGE 2899
(book, page, document number, etc.)

SW CORNER SE 1/4 - NE 1/4, Set 1/2" rebar w/orange cap #17939 in same location as previously set 1/2" rebar w/orange cap #8419.
This corner certificate being issued due to a change in monument and missing tie objects.

PLAN VIEW

(Show a minimum of three reference ties to durable physical objects, relevant monuments and physical conditions that will enable recovery of the corner.)



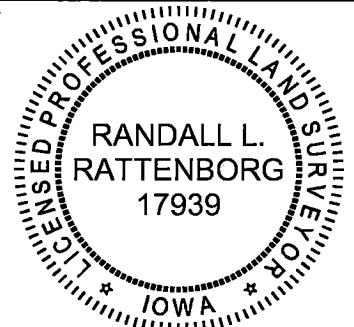
TIES ARE TO PLAT PARCEL 2024-59 & 60
IN SECTION 24, T 88 N, R 5 W

BURRINGTON GROUP, INC. PROJECT NO. 24-082

I HEREBY CERTIFY THAT THIS LAND SURVEYING DOCUMENT WAS PREPARED AND THE RELATED SURVEY WORK WAS PERFORMED BY ME OR UNDER MY DIRECT PERSONAL SUPERVISION AND THAT I AM A DULY LICENSED PROFESSIONAL LAND SURVEYOR UNDER THE LAWS OF THE STATE OF IOWA.

SEAL COVERS THIS SHEET ONLY

Randall L. Rattenborg, P.L.S. License #17939 Date 7/8/2024
My license renewal date is December 31, 2025



List Corners to be Indexed: Section Township Range
SW CORNER SE 1/4 - NE 1/4 24 T 88N R 5 W

BURRINGTON GROUP, INC.
Civil Engineering | Land Surveying
105 W. Main Street Manchester, Iowa 52057