



Daneen Schindler, RECORDER/REGISTRAR  
DELAWARE COUNTY IOWA

PREPARED BY: RANDALL L. RATTENBORG 105 WEST MAIN STREET MANCHESTER, IA 52057, 563-927-2434

# UNITED STATES PUBLIC LAND SURVEY CORNER CERTIFICATE

Land Survey Monuments situated in Section 13 , Township 88 North, Range 4 West of the Fifth Principal Meridian,  
Delaware County, Iowa.

Previously recorded in County Recorder's Office in SEE DESCRIPTIONS  
(book, page, document number, etc.)

NW CORNER, Found 1/2" rebar w/orange cap #8419 as per Corner Certificate recorded in Book 2003, Page 5645. This Corner Certificate being issued due to missing tie objects.

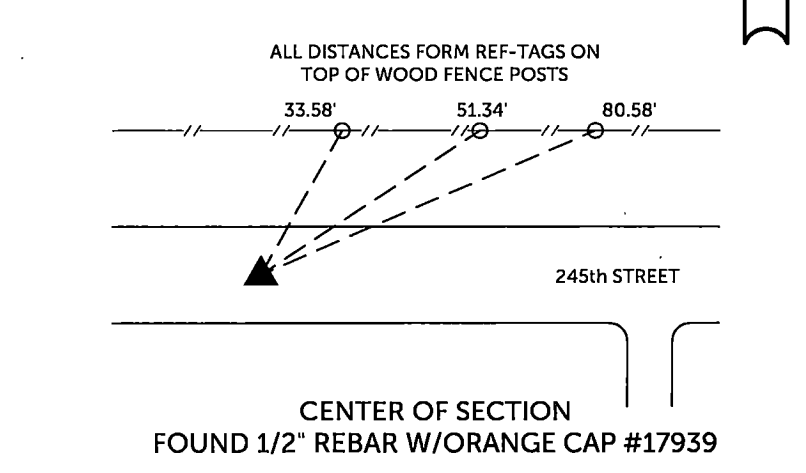
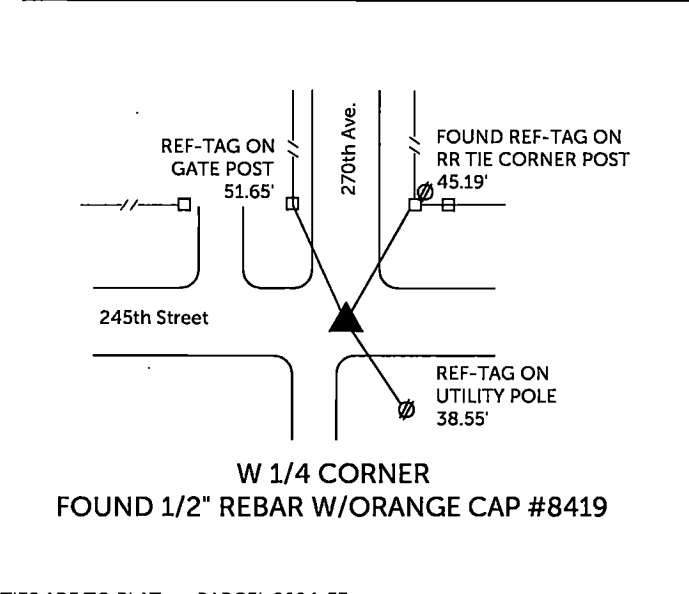
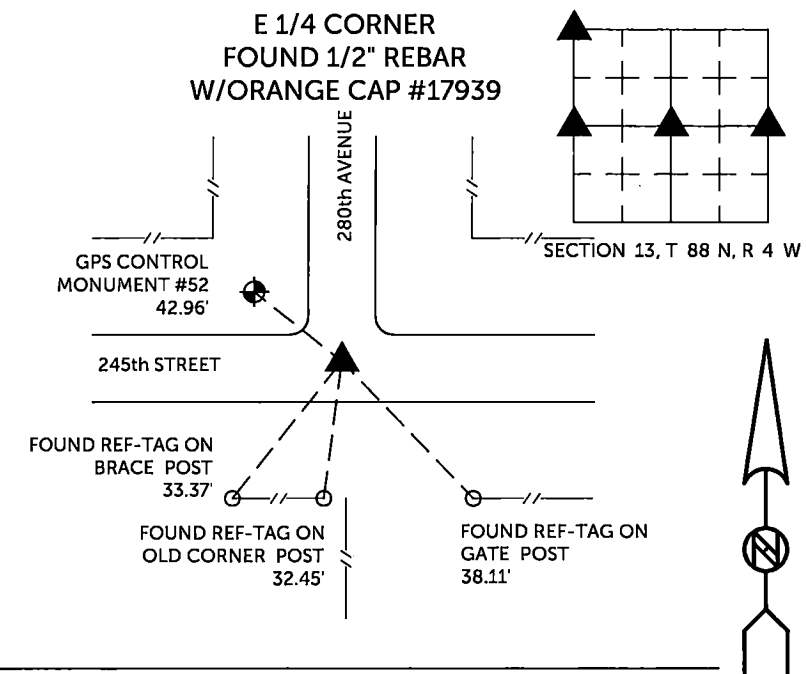
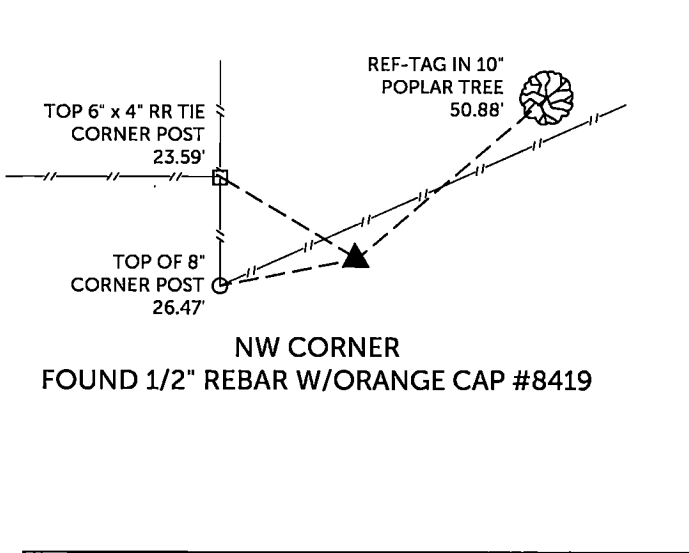
W 1/4 CORNER, Found 1/2" rebar w/orange cap #8419 as per Corner Certificate recorded in Book 2002, Page 346. This Corner Certificate being issued due to missing tie objects.

CENTER OF SECTION, Found 1/2" rebar w/orange cap #17939 as per plat recorded in Book 2019, Page 3310.

E 1/4 CORNER, Found 1/2" rebar w/orange cap #17939 as per plat recorded in Book 2019, Page 3310.

## PLAN VIEW

(Show a minimum of three reference ties to durable physical objects, relevant monuments and physical conditions that will enable recovery of the corner.)

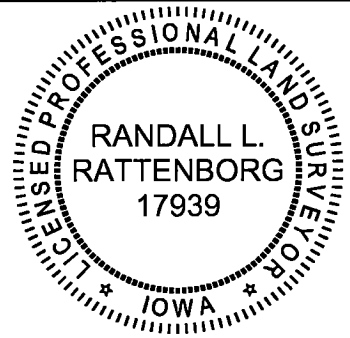


TIES ARE TO PLAT PARCEL 2024-33  
IN SECTION 13, T 88 N, R 4 W

BURRINGTON GROUP, INC. PROJECT NO. 24-042

I HEREBY CERTIFY THAT THIS LAND SURVEYING DOCUMENT WAS PREPARED AND THE RELATED SURVEY WORK WAS PERFORMED BY ME OR UNDER MY DIRECT PERSONAL SUPERVISION AND THAT I AM A DULY LICENSED PROFESSIONAL LAND SURVEYOR UNDER THE LAWS OF THE STATE OF IOWA.

SEAL COVERS THIS SHEET ONLY



*[Signature]* 5/24/2024  
 Randall L. Rattenborg, P.L.S. License #17939 Date  
 My license renewal date is December 31, 2025

List Corners to be Indexed:	Section	Township	Range
NW CORNER	13	T 88N	R 4 W
W 1/4 CORNER			
CENTER OF SECTION			
E 1/4 CORNER			

**BURRINGTON GROUP, INC.**  
 Civil Engineering | Land Surveying  
 105 W. Main Street Manchester, Iowa 52057