



Daneen Schindler, RECORDER/REGISTRAR
DELAWARE COUNTY IOWA

PREPARED BY: RANDALL L. RATTENBORG 105 WEST MAIN STREET MANCHESTER, IA 52057, 563-927-2434

UNITED STATES PUBLIC LAND SURVEY CORNER CERTIFICATE

Land Survey Monuments situated in Section 9, Township 90 North, Range 5 West of the Fifth Principal Meridian,
Delaware County, Iowa.

Previously recorded in County Recorder's Office in Center of Section Rec. Bk. 2010, Pg. 281

(book, page, document number, etc.)

SE Corner of the NW 1/4-SW 1/4, Set 1/2"Ø rebar with orange plastic cap PLS 17939 based upon the mathematical break down of the southwest quarter.

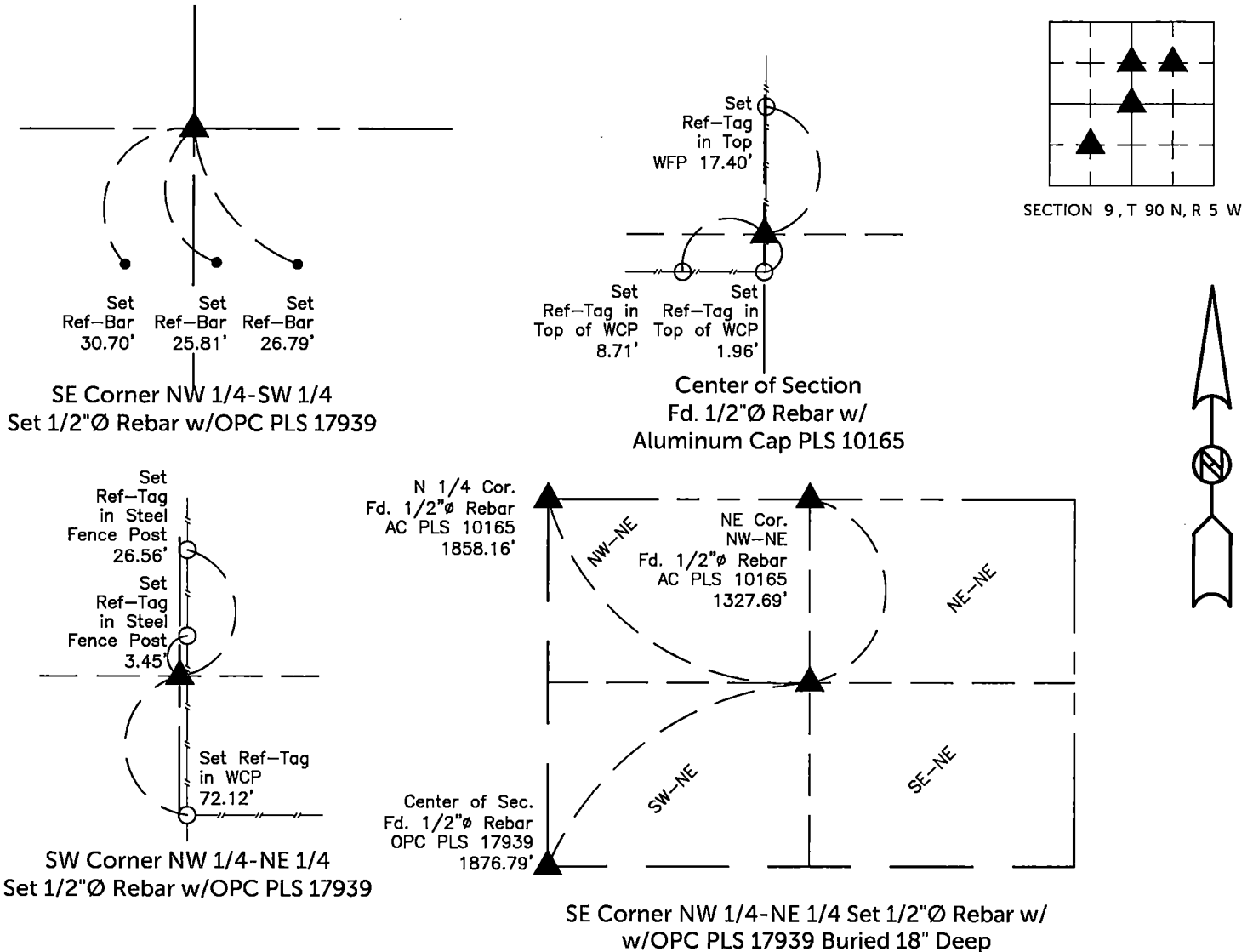
Center of Section, Found 1/2"Ø rebar with 2"Ø Aluminum Cap PLS 7060. Creating new certificate because all of the ties were lost.

SW Corner of the NW 1/4-NE 1/4, Set 1/2"Ø Rebar with orange plastic cap PLS 17939 equidistant and on-line between the N 1/4 corner and the the center of section.

SE Corner NW 1/4-NE 1/4, Set 1/2"Ø rebar with orange plastic cap PLS 17939 based upon the mathematical subdivision of the northeast quarter. Monument is buried 18" deep.

PLAN VIEW

(Show a minimum of three reference ties to durable physical objects, relevant monuments and physical conditions that will enable recovery of the corner.)



TIES ARE TO PLAT Parcel 2024-28
IN SECTION 9, T 90 N, R 5 W

BURRINGTON GROUP, INC. PROJECT NO. 24-032

I HEREBY CERTIFY THAT THIS LAND SURVEYING DOCUMENT WAS PREPARED AND THE RELATED SURVEY WORK WAS PERFORMED BY ME OR UNDER MY DIRECT PERSONAL SUPERVISION AND THAT I AM A DULY LICENSED PROFESSIONAL LAND SURVEYOR UNDER THE LAWS OF THE STATE OF IOWA.

SEAL COVERS THIS SHEET ONLY



[Signature]
Randall L. Rattenborg, P.L.S. License #17939 Date 5/16/2024
My license renewal date is December 31, 2025

| List Corners to be Indexed: | Section | Township | Range |
|-----------------------------|---------|----------|-------|
| SE Cor. NW-SW | 9 | T 90N | R 5 W |
| Center of Sec | | | |
| SW Cor. NW-NE | | | |
| SE Cor. NW-NE | | | |

BURRINGTON GROUP, INC.
Civil Engineering | Land Surveying
105 W. Main Street Manchester, Iowa 52057