



Daneen Schindler, RECORDER/REGISTRAR
DELAWARE COUNTY IOWA

PREPARED BY: RANDALL L. RATTENBORG 105 WEST MAIN STREET MANCHESTER, IA 52057, 563-927-2434

UNITED STATES PUBLIC LAND SURVEY CORNER CERTIFICATE

Land Survey Monuments situated in Section 10 , Township 87 North, Range 5 West of the Fifth Principal Meridian,
Delaware County, Iowa.

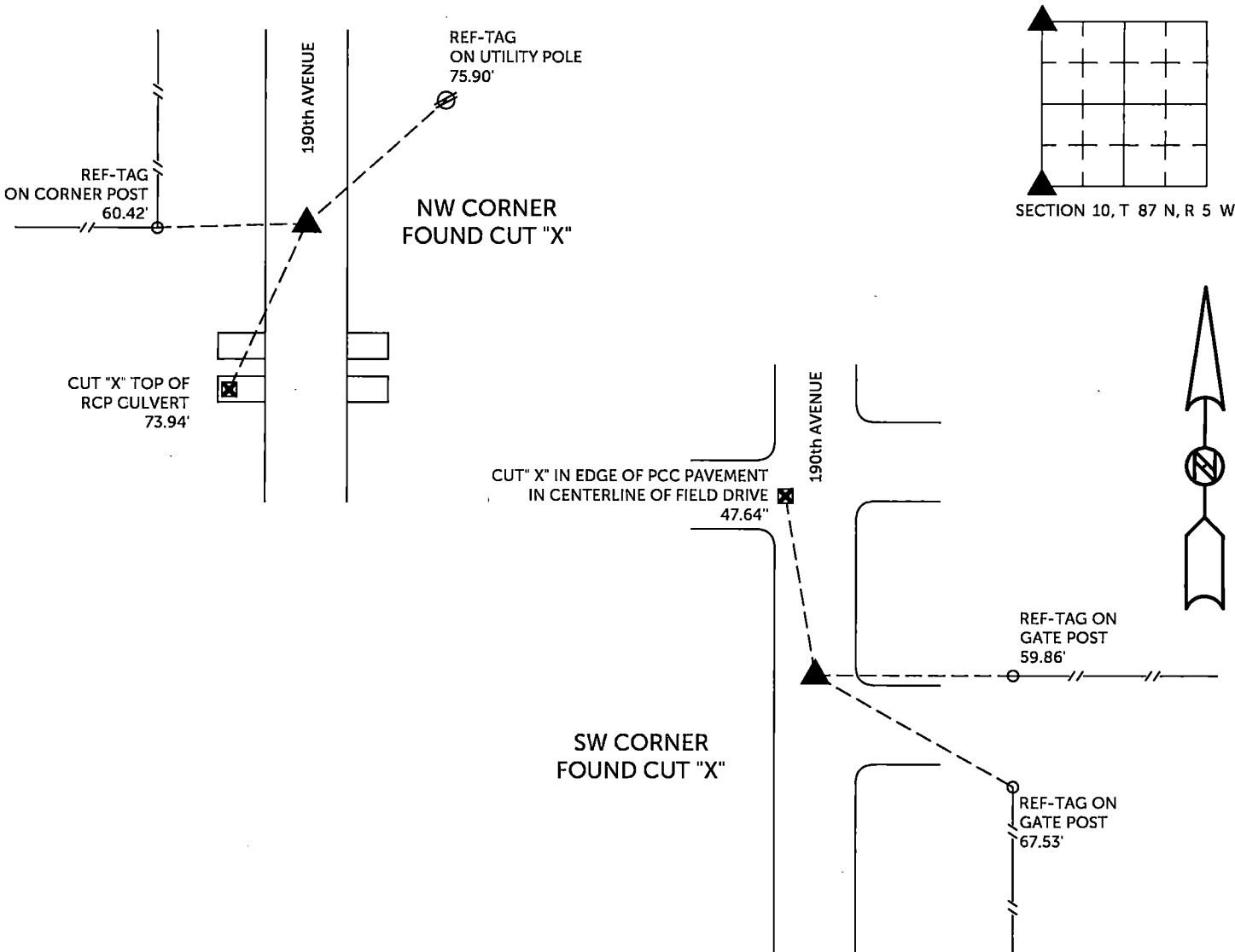
Previously recorded in County Recorder's Office in SEE DESCRIPTIONS
(book, page, document number, etc.)

NW CORNER, Found cut "X" in PCC pavement as per Corner Certificate recorded in Book 2003, Page 5759. This certificate being issued due to missing tie objects.

SW CORNER, Found cut "X" in PCC pavement as per Corner Certificate recorded in Book 2003, Page 5760. This certificate being issued due to missing tie objects.

PLAN VIEW

(Show a minimum of three reference ties to durable physical objects, relevant monuments and physical conditions that will enable recovery of the corner.)



TIES ARE TO PLAT PARCEL 2024-25
IN SECTION 10, T 87 N, R 5 W

BURRINGTON GROUP, INC. PROJECT NO. 24-017

I HEREBY CERTIFY THAT THIS LAND SURVEYING DOCUMENT WAS PREPARED AND THE RELATED SURVEY WORK WAS PERFORMED BY ME OR UNDER MY DIRECT PERSONAL SUPERVISION AND THAT I AM A DULY LICENSED PROFESSIONAL LAND SURVEYOR UNDER THE LAWS OF THE STATE OF IOWA.

4/19/2024

Date

Randall L. Rattenborg, P.L.S.

License #17939

My license renewal date is December 31, 2025

List Corners to be Indexed:

NW CORNER	10	T 87 N	R 5 W
SW CORNER			

SEAL COVERS THIS SHEET ONLY

BURRINGTON GROUP, INC.
Civil Engineering | Land Surveying
105 W. Main Street Manchester, Iowa 52057