



Book 2024 Page 790
Document 2024 790 Type 06 007 Pages 1
Date 4/12/2024 Time 11:44:11AM
Rec Amt \$7.00

Daneen Schindler, RECORDER/REGISTRAR
DELAWARE COUNTY IOWA

PREPARED BY: RANDALL L. RATTENBORG 105 WEST MAIN STREET MANCHESTER, IA 52057, 563-927-2434

UNITED STATES PUBLIC LAND SURVEY CORNER CERTIFICATE

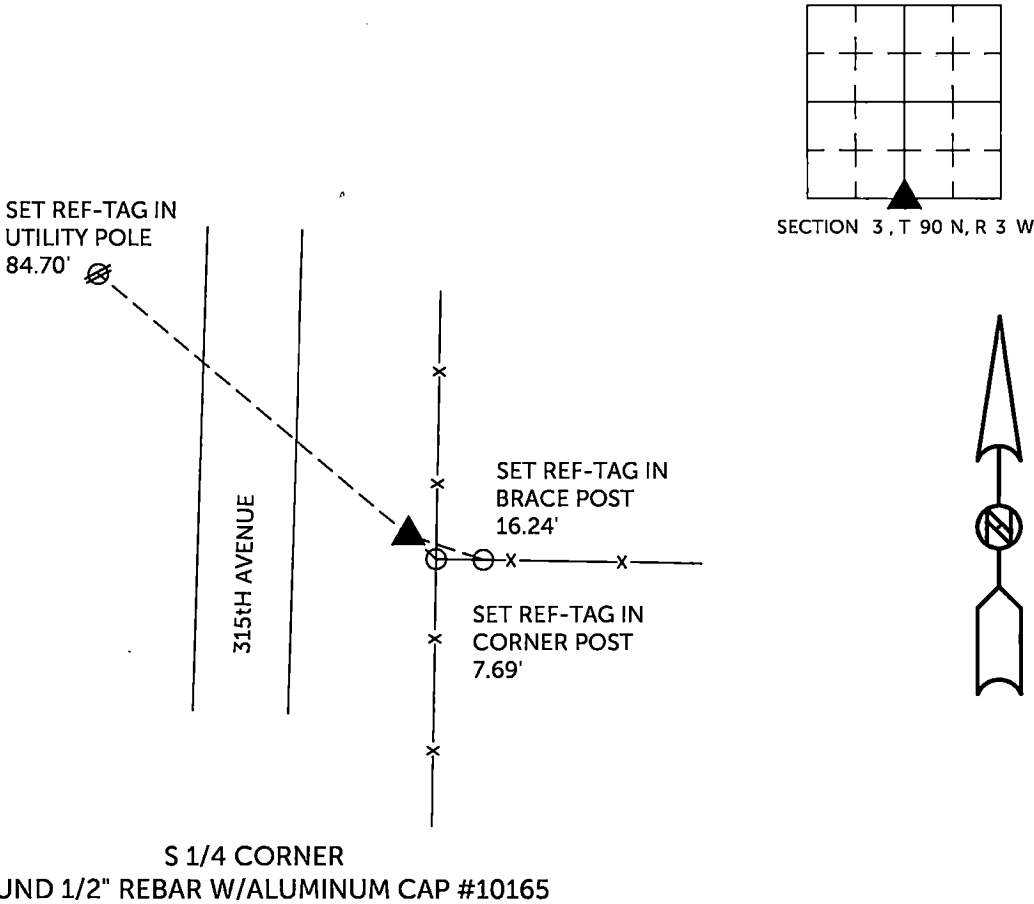
Land Survey Monuments situated in Section 3 , Township 90 North, Range 3 West of the Fifth Principal Meridian,
Delaware County, Iowa.

Previously recorded in County Recorder's Office in Corner Tie Book 1, Page 210
(book, page, document number, etc.)

S 1/4 CORNER, Found 1/2" rebar w/aluminum cap #10165. This certificate being issued due to missing tie objects from previous certificate.

PLAN VIEW

(Show a minimum of three reference ties to durable physical objects, relevant monuments and physical conditions that will enable recovery of the corner.)

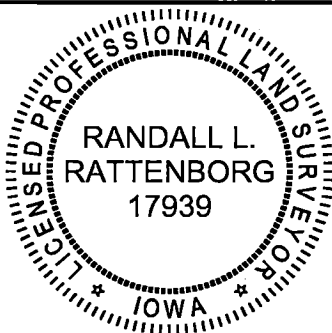


TIES ARE TO PLAT PARCEL 2024-18
IN SECTION 3, T 90 N, R 3 W

BURRINGTON GROUP, INC. PROJECT NO. 24-015

I HEREBY CERTIFY THAT THIS LAND SURVEYING DOCUMENT
WAS PREPARED AND THE RELATED SURVEY WORK WAS
PERFORMED BY ME OR UNDER MY DIRECT PERSONAL
SUPERVISION AND THAT I AM A DULY LICENSED PROFESSIONAL
LAND SURVEYOR UNDER THE LAWS OF THE STATE OF IOWA.

SEAL COVERS THIS SHEET ONLY



[Signature] 4/12/2024
Randall L. Rattenborg, P.L.S. License #17939 Date
My license renewal date is December 31, 2025
List Corners to be Indexed: Section Township Range
S 1/4 CORNER 3 T 90 N R 3 W

BURRINGTON GROUP, INC.
Civil Engineering | Land Surveying
105 W. Main Street Manchester, Iowa 52057