



Book 2024 Page 665

Document 2024 665 Type 06 007 Pages 1
Date 3/27/2024 Time 2:27:59PM
Rec Amt \$7.00

Daneen Schindler, RECORDER/REGISTRAR
DELAWARE COUNTY IOWA

PREPARED BY: RANDALL L. RATTENBORG 105 WEST MAIN STREET MANCHESTER, IA 52057, 563-927-2434

UNITED STATES PUBLIC LAND SURVEY CORNER CERTIFICATE

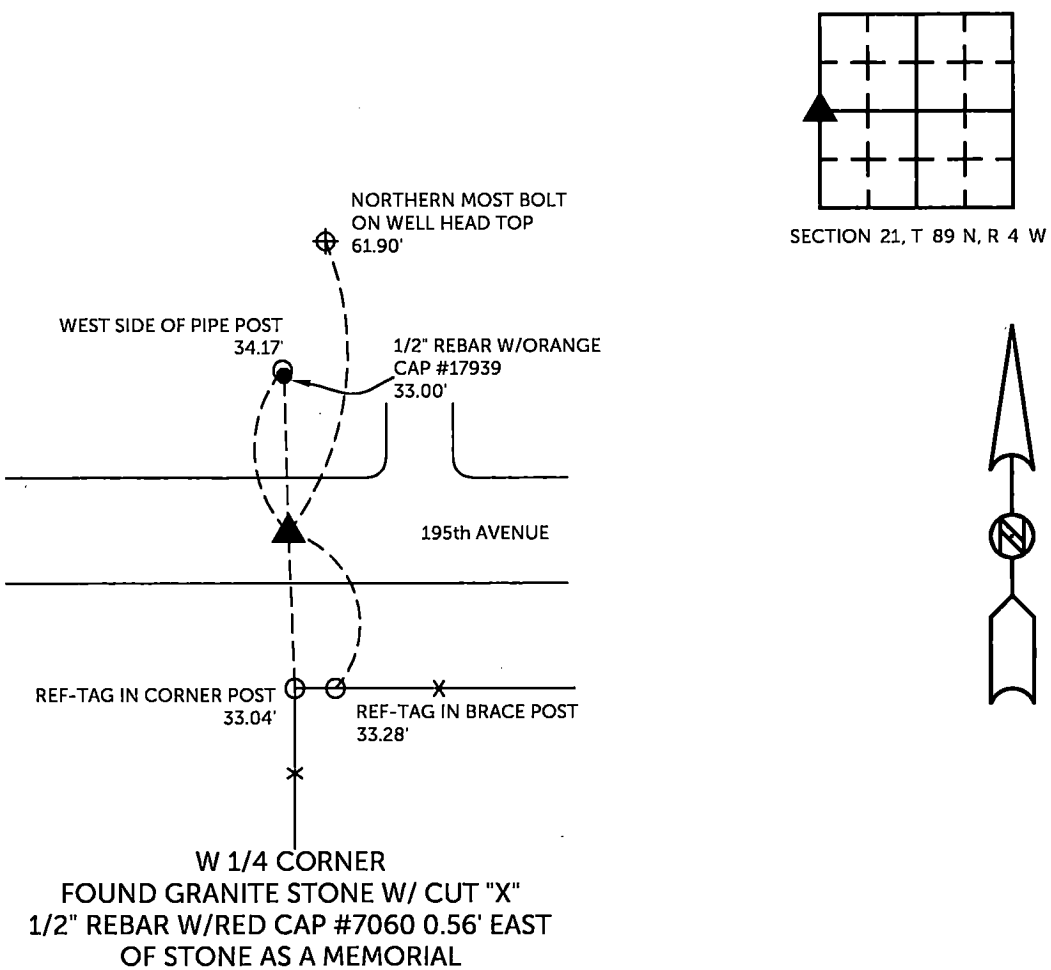
Land Survey Monuments situated in Section 21 , Township 89 North, Range 4 West of the Fifth Principal Meridian,
Delaware County, Iowa.

Previously recorded in County Recorder's Office in W 1/4 CORNER - BOOK 2007, PAGE 1442
(book, page, document number, etc.)

W 1/4 CORNER, Found 1/2" rebar w/red cap #7060 and granite stone with cut "X". Some of the previous tie objects are missing.

PLAN VIEW

(Show a minimum of three reference ties to durable physical objects, relevant monuments and physical conditions that will enable recovery of the corner.)

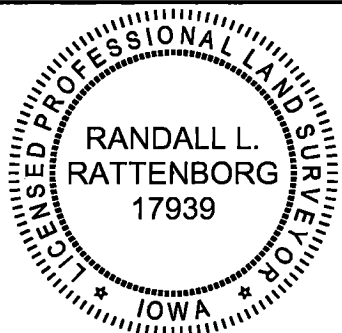


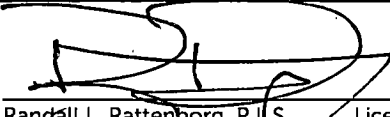
TIES ARE TO PLAT
IN SECTION 21, T 89 N, R 4 W

BURRINGTON GROUP, INC. PROJECT NO. 23-165

I HEREBY CERTIFY THAT THIS LAND SURVEYING DOCUMENT
WAS PREPARED AND THE RELATED SURVEY WORK WAS
PERFORMED BY ME OR UNDER MY DIRECT PERSONAL
SUPERVISION AND THAT I AM A DULY LICENSED PROFESSIONAL
LAND SURVEYOR UNDER THE LAWS OF THE STATE OF IOWA.

SEAL COVERS THIS SHEET ONLY




Randall L. Rattenborg, P.L.S. License #17939 Date 3/27/2024
My license renewal date is December 31, 2025
List Corners to be Indexed: Section Township Range
W 1/4 CORNER 21 T 89N R 4 W

 **BURRINGTON GROUP, INC.**
Civil Engineering | Land Surveying
105 W. Main Street Manchester, Iowa 52057