



Book 2024 Page 560

Document 2024 560 Type 06 007 Pages 1
Date 3/12/2024 Time 1:09:19PM
Rec Amt \$7.00

Daneen Schindler, RECORDER/REGISTRAR
DELAWARE COUNTY IOWA

PREPARED BY: RANDALL L. RATTENBORG 105 WEST MAIN STREET MANCHESTER, IA 52057, 563-927-2434

UNITED STATES PUBLIC LAND SURVEY CORNER CERTIFICATE

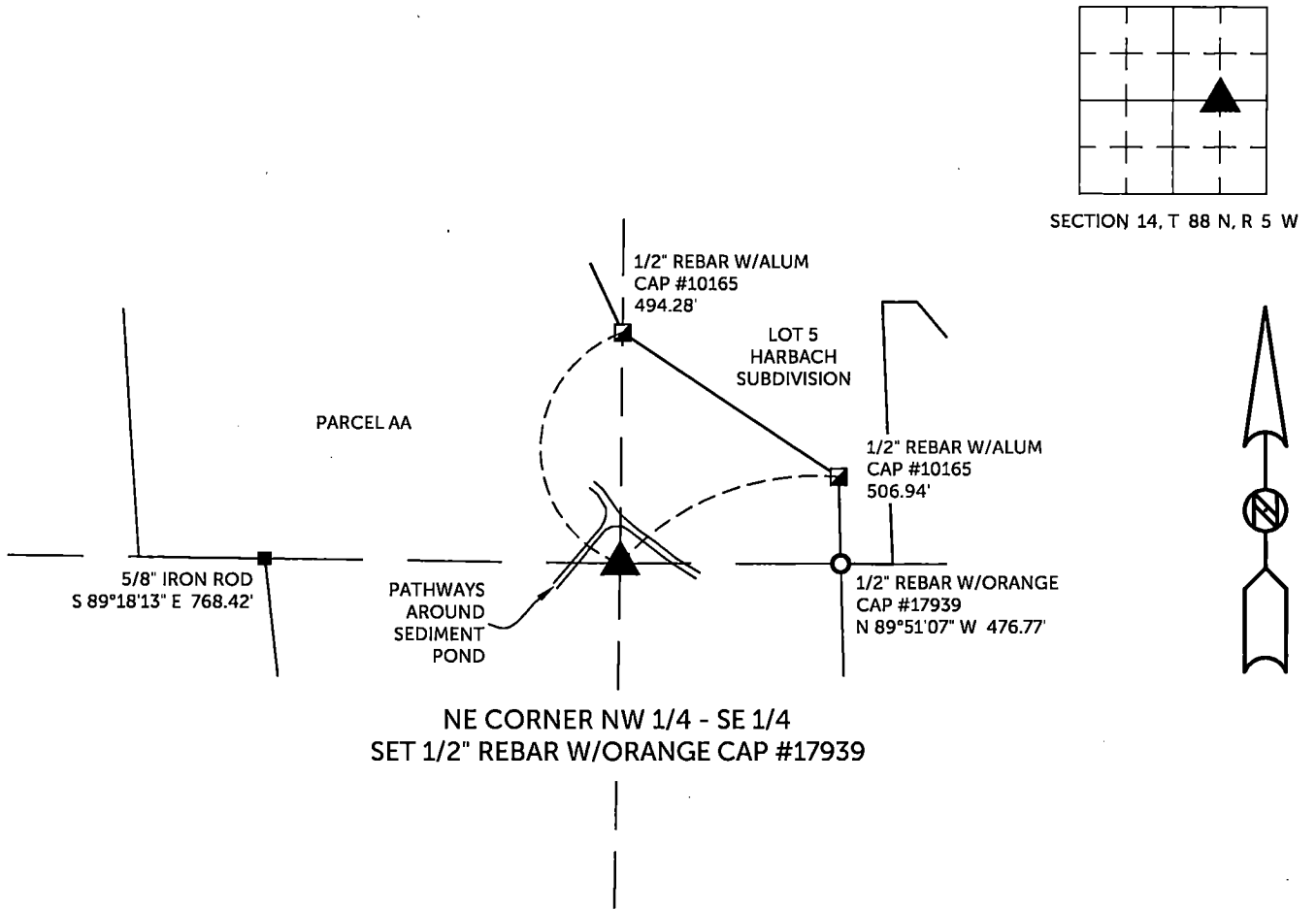
Land Survey Monuments situated in Section 14, Township 88 North, Range 5 West of the Fifth Principal Meridian,
Delaware County, Iowa.

Previously recorded in County Recorder's Office in Not Recorded
(book, page, document number, etc.)

NE CORNER NW 1/4 - SE 1/4, Set 1/2" rebar w/orange cap #17939 on a line from the Center of Section through a 5/8" iron rod on the south line of Parcel AA, as recorded in Book 2009, Page 3149. A line from the East 1/4 Corner to this corner also fits the field evidence.

PLAN VIEW

(Show a minimum of three reference ties to durable physical objects, relevant monuments and physical conditions that will enable recovery of the corner.)

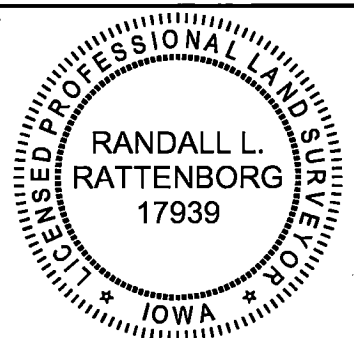


TIES ARE TO PLAT HARBACH SUBDIVISION
IN SECTION 14, T 88 N, R 5 W

BURRINGTON GROUP, INC. PROJECT NO. 23-118

I HEREBY CERTIFY THAT THIS LAND SURVEYING DOCUMENT
WAS PREPARED AND THE RELATED SURVEY WORK WAS
PERFORMED BY ME OR UNDER MY DIRECT PERSONAL
SUPERVISION AND THAT I AM A DULY LICENSED PROFESSIONAL
LAND SURVEYOR UNDER THE LAWS OF THE STATE OF IOWA.

SEAL COVERS THIS SHEET ONLY



 3/12/2024

Randall L. Rattenborg, P.L.S. License #17939 Date

My license renewal date is December 31, 2025

List Corners to be Indexed: Section Township Range

NE CORNER NW 1/4 - SE 1/4 14 T 88N R 5 W

BURRINGTON GROUP, INC.
Civil Engineering | Land Surveying
105 W. Main Street Manchester, Iowa 52057