

Recorded: 1/19/2024 at 11:46:07.0 AM
 County Recording Fee: \$7.00
 Iowa E-Filing Fee: \$3.13
 Combined Fee: \$10.13
 Revenue Tax: \$0.00
 Delaware County, Iowa
 Daneen Schindler RECORDER
 BK: 2024 PG: 160

Prepared By: Matthew A. Kofta, P.L.S., VJ Engineering, 1501 Technology Parkway, Suite 100, Cedar Falls, Iowa, 50613, (319) 266-5829
 Return To: Matthew A. Kofta, P.L.S., VJ Engineering, 1501 Technology Parkway, Suite 100, Cedar Falls, Iowa, 50613, (319) 266-5829

United States Public Land Survey Corner Certificate of

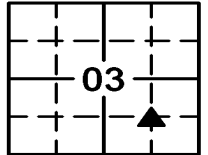
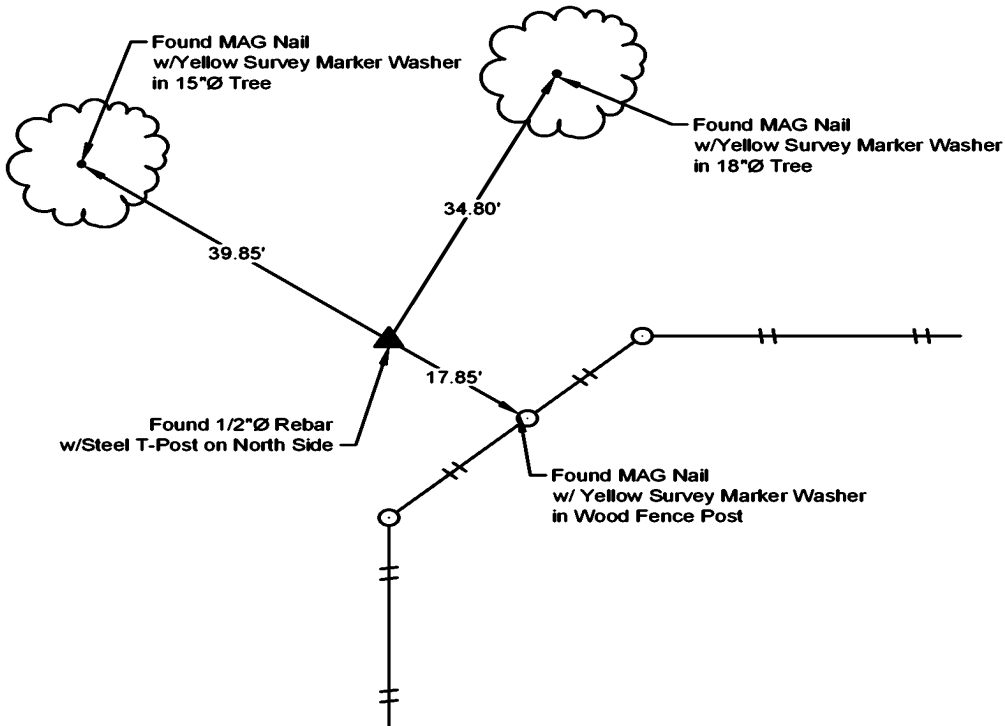
Land Survey Monuments situated in Section No. 03, Township No. 90 North,
 Range No. 04 West, of the Fifth Principal Meridian, Delaware County, Iowa
 Previously recorded in Document No. N/A

Show reason for preparing this certificate, the evidence and detailed procedures used in establishing the corner positions and monumentation found or placed.

Monument Description and Remarks: Southeast 1/16 Corner -- Section 03-T90N-R04W
Went to approximate intersection of fences and found a 1/2"Ø Rebar with a steel t-post on
the North side. Found 1/2"Ø rebar agrees with fences in the area, accepted and used as the corner.
No previous corner certificate found.

PLAN - VIEW

(Show a minimum of three reference ties to durable physical objects, relevant monuments and physical conditions that will enable recovery of the corner.)



LEGEND

- Found Section Corner
- Set Section Corner
- Set 5/8"Ø x 24" Rebar w/ Orange Cap Iowa P.L.S. #22561
- Utility Pole
- Fence Line
- MAG Nail
- Fence Post
- Light Pole
- Trees Decid. / Conif.
- Telephone Pedestal
- Concrete Reference Monument



I hereby certify that this land surveying document was prepared and the related survey work was performed by me or under my direct personal supervision and that I am a duly licensed Land Surveyor under the laws of the State of Iowa.

Matthew A. Kofta

Matthew A. Kofta, P.L.S.
 License Number 22561
 My license renewal date is December 31, 2024
 Pages or sheets covered by this seal: 1 of 1

List Corner to be Indexed

Corner	Section	Twp	Range
Southeast 1/16	03	90N	04W



VJ Engineering
 1501 Technology Parkway
 Cedar Falls, Iowa - 319-266-5829

**Section Corner
 Reference Ties**

file no. 238113	drawn by JMK
date 01/17/24	