

Recorded: 1/19/2024 at 11:44:38.0 AM
 County Recording Fee: \$7.00
 Iowa E-Filing Fee: \$3.13
 Combined Fee: \$10.13
 Revenue Tax: \$0.00
 Delaware County, Iowa
 Daneen Schindler RECORDER
 BK: 2024 PG: 155

Prepared By: Matthew A. Kofa, P.L.S., VJ Engineering, 1501 Technology Parkway, Suite 100, Cedar Falls, Iowa, 50613, (319) 266-5829
 Return To: Matthew A. Kofa, P.L.S., VJ Engineering, 1501 Technology Parkway, Suite 100, Cedar Falls, Iowa, 50613, (319) 266-5829

United States Public Land Survey Corner Certificate of

Land Survey Monuments situated in Section No. 02, Township No. 90 North,
 Range No. 04 West, of the Fifth Principal Meridian, Delaware County, Iowa
 Previously recorded in Document No. Bk. 1, Pg. 106 & Bk. 2009, Pg. 2387

Show reason for preparing this certificate, the evidence and detailed procedures used in establishing the corner positions and monumentation found or placed.

Monument Description and Remarks: Center -- Section 02-T90N-R04W

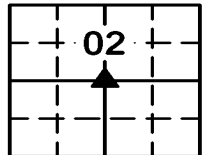
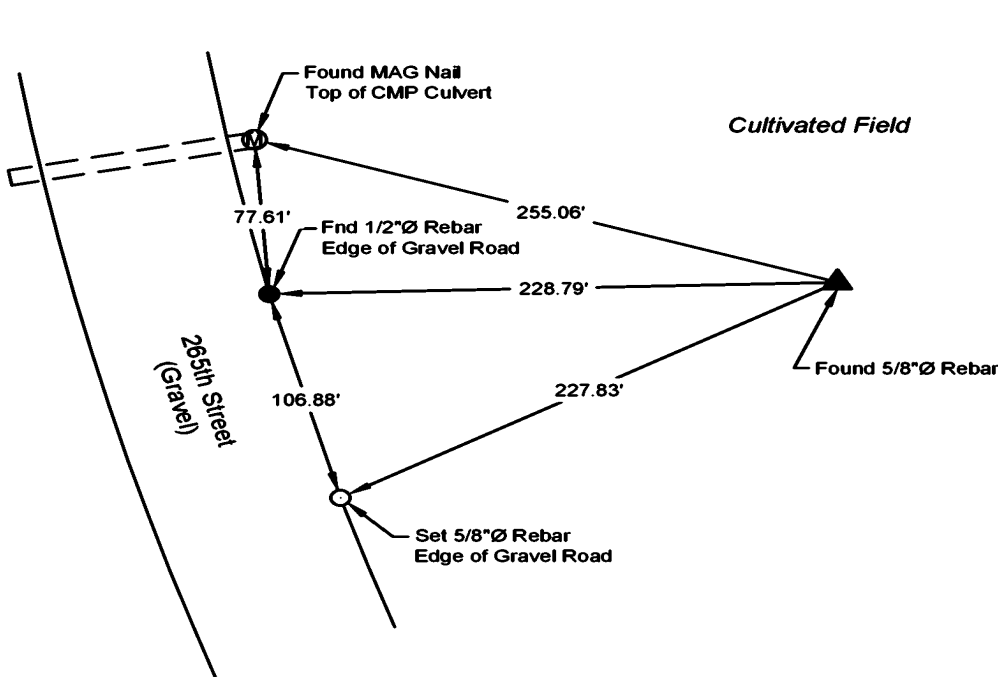
Previous corner certificate states a 5/8"Ø rebar with a post and sign were set above a 6"x8"x21" limestone.

Searched for and found 5/8"Ø Rebar in cultivated field at the corner.

This corner certificate is being prepared to update the reference ties.

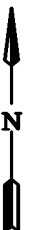
PLAN - VIEW

(Show a minimum of three reference ties to durable physical objects, relevant monuments and physical conditions that will enable recovery of the corner.)



LEGEND

- Found Section Corner
- Set Section Corner
- Set 5/8"Ø x 24" Rebar w/ Orange Cap Iowa P.L.S. #22561
- Utility Pole
- Fence Line
- MAG Nail
- Fence Post
- Light Pole
- Trees
Decid. / Conif.
- Telephone Pedestal
- Concrete Reference Monument



I hereby certify that this land surveying document was prepared and the related survey work was performed by me or under my direct personal supervision and that I am a duly licensed Land Surveyor under the laws of the State of Iowa.



Matthew A. Kofa
 Matthew A. Kofa, P.L.S.
 License Number 22561 01/18/24 Date
 My license renewal date is December 31, 2024
 Pages or sheets covered by this seal: 1 of 1

List Corner to be Indexed

Corner	Section	Twp	Range
Center	02	90N	04W



VJ Engineering
 1501 Technology Parkway
 Cedar Falls, Iowa - 319-266-5829

**Section Corner
 Reference Ties**

file no. 238113
drawn by NAME
date 01/02/24