



Book 2023 Page 3227

Document 2023 3227 Type 06 007 Pages 1  
Date 12/27/2023 Time 2:49:52PM  
Rec Amt \$7.00

Daneen Schindler, RECORDER/REGISTRAR  
DELAWARE COUNTY IOWA

PREPARED BY <sup>CHK</sup> RANDALL L. RATTENBORG 105 WEST MAIN STREET MANCHESTER, IA 52057, 563-927-2434

# UNITED STATES PUBLIC LAND SURVEY CORNER CERTIFICATE

Land Survey Monuments situated in Section 21, Township 87 North, Range 4 West of the Fifth Principal Meridian,  
Delaware County, Iowa.

Previously recorded in County Recorder's Office in See Description Below  
(book, page, document number, etc.)

NW Corner: Found 5/8" rebar w/aluminum cap #19211 as per Corner Certificate recorded in Book 2010, Page <sup>1691</sup>~~1891~~.  
This certificate being issued due to missing tie objects.

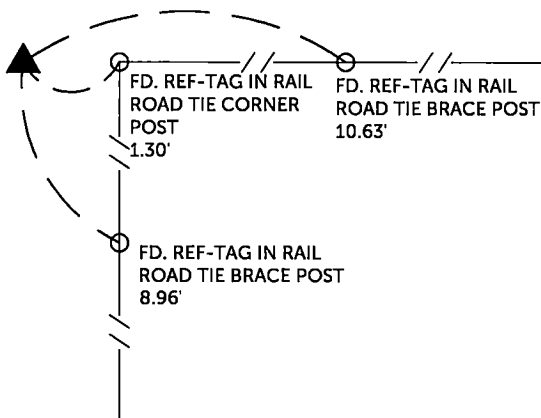
SW Corner NW 1/4-NW 1/4: Found 5/8" rebar w/aluminum cap #19211 as per Corner Certificate recorded in Book 2010, Page <sup>1691</sup>~~1891~~. This certificate being issued due to missing tie objects.

SE Corner NE 1/4-NW 1/4: Set 1/2" rebar w/ orange plastic cap #17939 proportional between N 1/4 Corner and Center of Section.

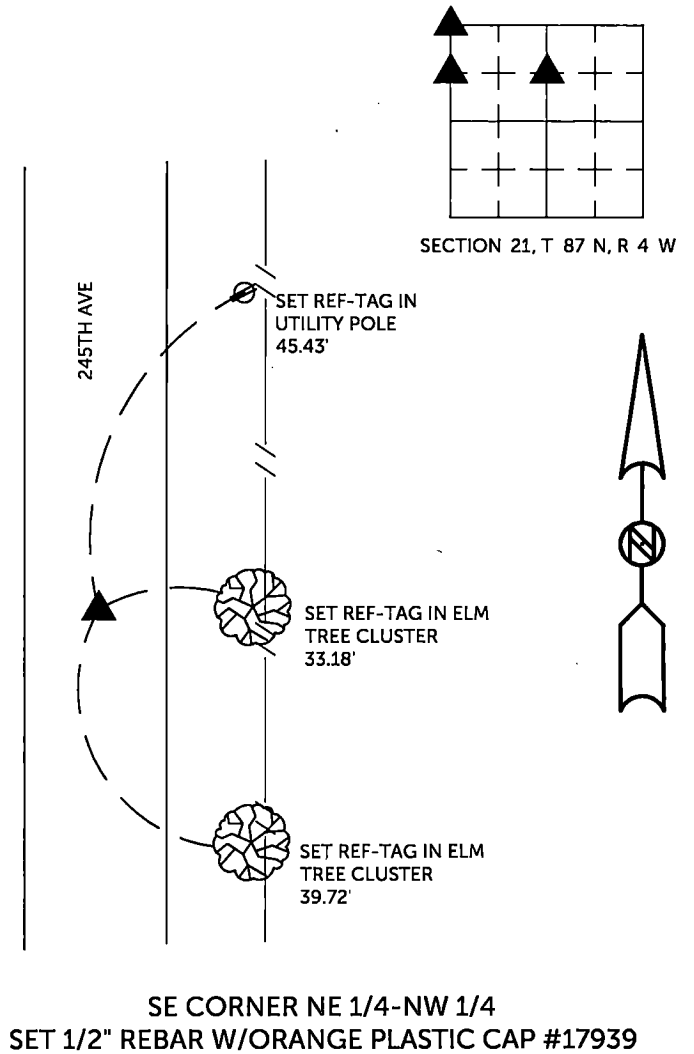
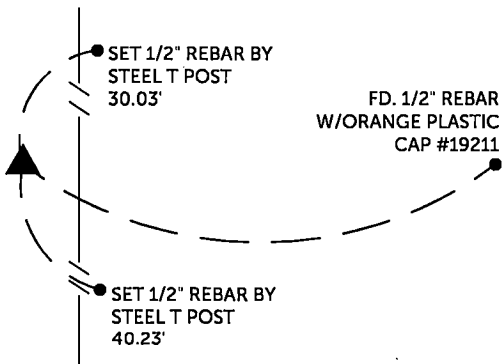
## PLAN VIEW

(Show a minimum of three reference ties to durable physical objects, relevant monuments and physical conditions that will enable recovery of the corner.)

NW CORNER  
FD. 5/8" REBAR W/ALUM CAP #19211



SW CORNER-NW 1/4-NW 1/4  
FD. 5/8" REBAR W/ALUM CAP #19211



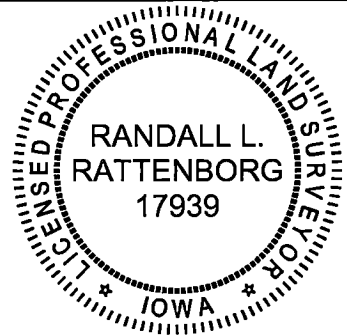
TIES ARE TO PLAT Parcel 2023-113, 2023-114, 2023-115  
IN SECTION 21, T 87 N, R 4 W

BURRINGTON GROUP, INC. PROJECT NO. 23-157

I HEREBY CERTIFY THAT THIS LAND SURVEYING DOCUMENT WAS PREPARED AND THE RELATED SURVEY WORK WAS PERFORMED BY ME OR UNDER MY DIRECT PERSONAL SUPERVISION AND THAT I AM A DULY LICENSED PROFESSIONAL LAND SURVEYOR UNDER THE LAWS OF THE STATE OF IOWA.

SEAL COVERS THIS SHEET ONLY

Randall L. Rattenborg, P.L.S. License #17939 Date 12/27/2023  
My license renewal date is December 31, 2025  
List Corners to be Indexed: Section Township Range



NW CORNER 21 T 87N R 4 W  
SW CORNER NW 1/4-NW 1/4  
SE CORNER NE 1/4-NW 1/4

**BURRINGTON GROUP, INC.**  
Civil Engineering | Land Surveying  
105 W. Main Street Manchester, Iowa 52057