



Daneen Schindler, RECORDER/REGISTRAR
DELAWARE COUNTY IOWA

PREPARED BY: RANDALL L. RATTENBORG 105 WEST MAIN STREET MANCHESTER, IA 52057, 563-927-2434

UNITED STATES PUBLIC LAND SURVEY CORNER CERTIFICATE

Land Survey Monuments situated in Section 22, Township 90 North, Range 6 West of the Fifth Principal Meridian,
Delaware County, Iowa.

Previously recorded in County Recorder's Office in Not Recorded
(book, page, document number, etc.)

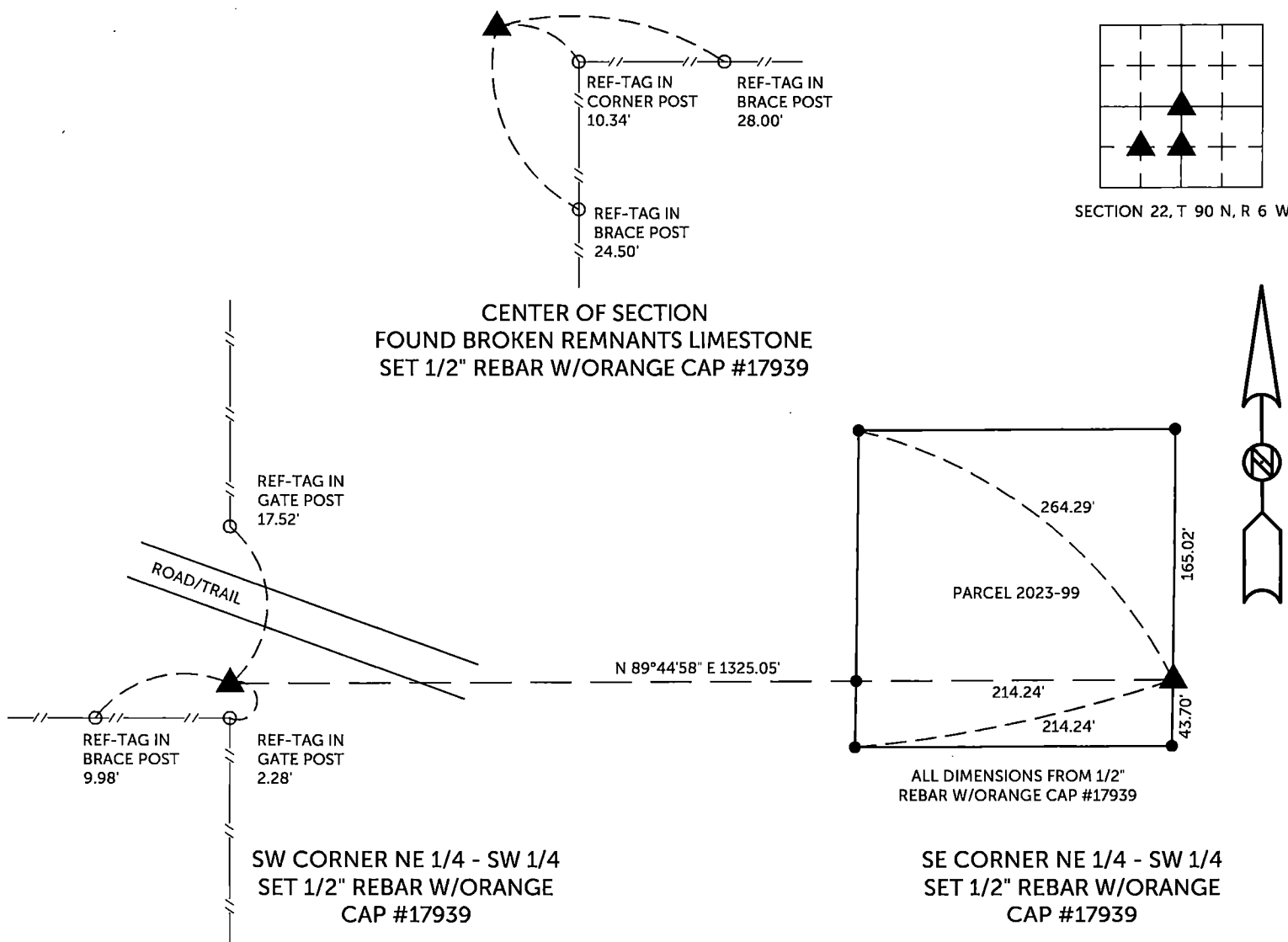
SE CORNER NE 1/4 - SW 1/4, Set 1/2" rebar w/orange cap #17939 in the fence line evidence along the east side of the NE 1/4 - SW 1/4 and 165 feet south of the fence line along the north line of the south 5 acres of the NE 1/4 - SW 1/4.

SW CORNER NE 1/4 - SW 1/4, Set 1/2" rebar w/orange cap #17939 165 feet south of the fence line along the north line of the south 5 acres of the NE 1/4 - SW 1/4 in the fence line along the west side of the NE 1/4 - SW 1/4

CENTER OF SECTION, Found remnants of a limestone after using the distance from the S 1/4 Corner to the SE Corner NE 1/4 - SW 1/4 doubled over, and the distance of 40.35 chains (20.17 1/2 chains, doubled, as per County Survey Book 2, Page 139) from the mathematical position of the E 1/4 Corner. Set 1/2" rebar w/orange cap #17939 at this location.

PLAN VIEW

(Show a minimum of three reference ties to durable physical objects, relevant monuments and physical conditions that will enable recovery of the corner.)

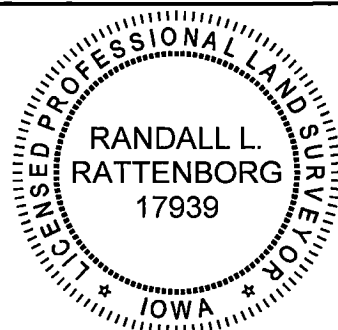


TIES ARE TO PLAT PARCEL 2023-99
IN SECTION 22, T 90 N, R 6 W

BURRINGTON GROUP, INC. PROJECT NO. 23-085

I HEREBY CERTIFY THAT THIS LAND SURVEYING DOCUMENT WAS PREPARED AND THE RELATED SURVEY WORK WAS PERFORMED BY ME OR UNDER MY DIRECT PERSONAL SUPERVISION AND THAT I AM A DULY LICENSED PROFESSIONAL LAND SURVEYOR UNDER THE LAWS OF THE STATE OF IOWA.

SEAL COVERS THIS SHEET ONLY



[Signature] 12/7/2023
 Randall L. Rattenborg, P.L.S. License #17939 Date
 My license renewal date is December 31, 2025
 List Corners to be Indexed: Section Township Range

CENTER OF SECTION	22	T 90N	R 6 W
SE CORNER NE 1/4 - SW 1/4			
SW CORNER NE 1/4 - SW 1/4			

BURRINGTON GROUP, INC.
 Civil Engineering | Land Surveying
 105 W. Main Street Manchester, Iowa 52057