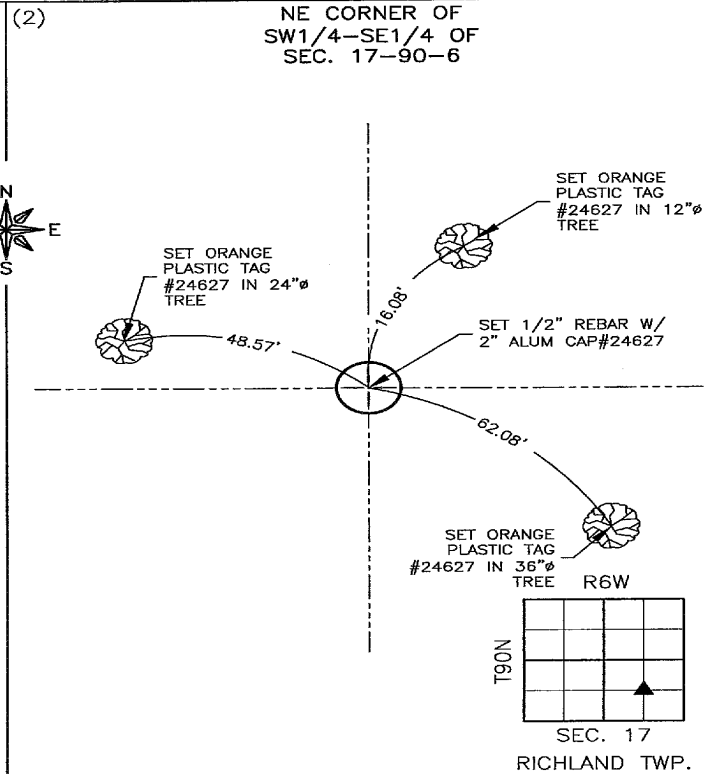
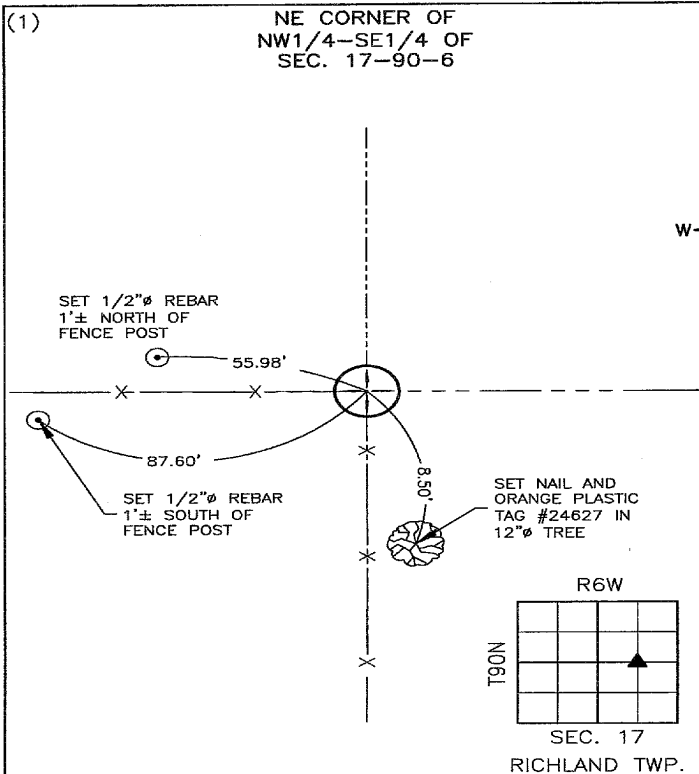


Recorded: 11/30/2023 at 1:38:48.0 PM
 County Recording Fee: \$7.00
 Iowa E-Filing Fee: \$3.13
 Combined Fee: \$10.13
 Revenue Tax:
 Delaware County, Iowa
 Daneen Schindler RECORDER
 BK: 2023 PG: 3015

PREPARED BY/RETURN TO: FEHR GRAHAM, 221 EAST MAIN ST., SUITE 301 MANCHESTER, IA 52057 - PH: 563.927.2060

UNITED STATES PUBLIC LAND SURVEY CORNER CERTIFICATE DELAWARE COUNTY, IOWA SECTION 17-T90N-R6W



PREVIOUSLY RECORDED:
 NO PREVIOUS CERTIFICATE ON FILE.

PURPOSE OF CERTIFICATE AND ESTABLISHMENT:
 SET MONUMENT AT FENCE CORNER AFTER LOOKING AT ONLINE AT MIDPOINT BETWEEN THE CENTER OF SECTION AND THE E1/4 CORNER.

MONUMENT DESCRIPTION:
 SET 1/2" REBAR W/ 2"Ø ALUMINUM CAP#24627

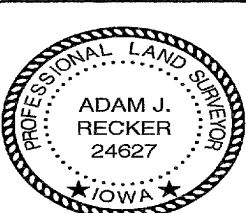
PREVIOUSLY RECORDED:
 NO PREVIOUS CERTIFICATE ON FILE.

PURPOSE OF CERTIFICATE AND ESTABLISHMENT:
 SET MONUMENT AT INTERSECTION OF QUARTER-QUARTER SECTION LINES.

MONUMENT DESCRIPTION:
 SET 1/2" REBAR W/ 2"Ø ALUMINUM CAP#24627

CORNERS TO BE INDEXED

CORNER	SECTION	TOWNSHIP	RANGE
(1) NE of NW1/4-SE1/4	17	90N	6W
(2) NE of SW1/4-SE1/4	17	90N	6W



I hereby certify that this land surveying document was prepared and the related survey work was performed by me or under my direct personal supervision and that I am a duly licensed Land Surveyor under the laws of the State of Iowa.

Adam J. Recker 11-30-2023
 Adam J. Recker, P.L.S. Date
 License Number: 24627
 My license renewal date is December 31, 2023.
 Sheets covered by this seal: THIS SHEET ONLY

FEHR GRAHAM
 ENGINEERING & ENVIRONMENTAL
 © 2023 FEHR GRAHAM

ILLINOIS
 IOWA
 WISCONSIN

G:\C3D\23\23-759\23-759 SCC_NS.dwg

JOB NUMBER:
23-759

SHEET NUMBER:
1 of 1