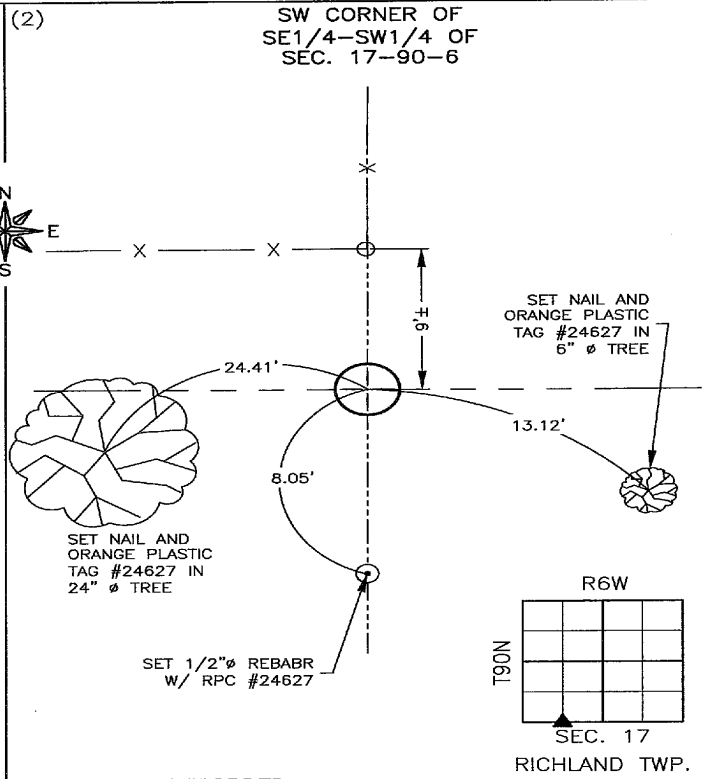
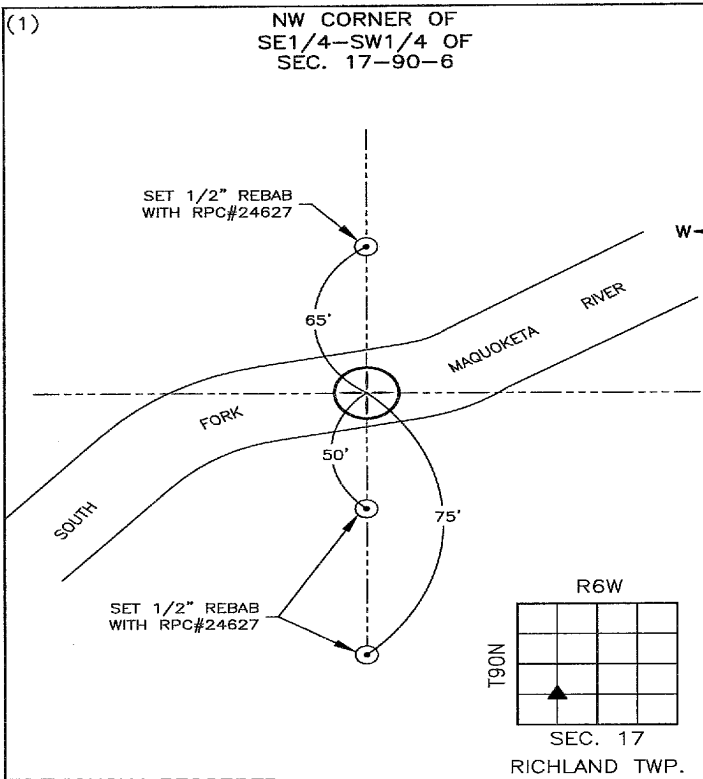


Recorded: 11/30/2023 at 10:51:21.0 AM  
 County Recording Fee: \$7.00  
 Iowa E-Filing Fee: \$3.13  
 Combined Fee: \$10.13  
 Revenue Tax:  
 Delaware County, Iowa  
 Daneen Schindler RECORDER  
 BK: 2023 PG: 3008

PREPARED BY/RETURN TO: FEHR GRAHAM, 221 EAST MAIN ST., SUITE 301 MANCHESTER, IA 52057 - PH: 563.927.2060

## UNITED STATES PUBLIC LAND SURVEY CORNER CERTIFICATE DELAWARE COUNTY, IOWA SECTION 17-T90N-R6W



**PREVIOUSLY RECORDED:**  
 NO PREVIOUS CERTIFICATE ON FILE.

**PURPOSE OF CERTIFICATE AND ESTABLISHMENT:**  
 CALCULATED MONUMENT POSITION AT INTERSECTION OF QUARTER-QUARTER SECTION LINE. CORNER FALLS IN RIVER.

**MONUMENT DESCRIPTION:**  
 CALCULATED POSITION, SET WITNESS CORNERS TO HELP ESTABLISH CORNER POSITION.

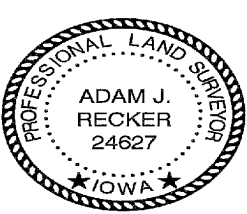
**PREVIOUSLY RECORDED:**  
 NO PREVIOUS CERTIFICATE ON FILE.

**PURPOSE OF CERTIFICATE AND ESTABLISHMENT:**  
 SET MONUMENT AT INTERSECTION OF FENCE LINE AND SECTION LINE AFTER LOOKING AT ONLINE AT MIDPOINT BETWEEN THE S1/4 AND THE SOUTHWEST CORNER.

**MONUMENT DESCRIPTION:**  
 SET 1/2"Ø REBAR WITH 2"Ø ALUMINUM CAP #24627

CORNERS TO BE INDEXED

CORNER	SECTION	TOWNSHIP	RANGE
(1) NW of SE1/4-SW1/4	17	90N	6W
(2) SW of SE1/4-SW1/4	17	90N	6W



I hereby certify that this land surveying document was prepared by me or under my direct personal supervision and that I am a duly licensed Land Surveyor under the laws of the State of Iowa.

*Adam J. Recker* 11-30-2023  
 Adam J. Recker, P.L.S. Date  
 License Number: 24627  
 My license renewal date is December 31, 2023.  
 Sheets covered by this seal: THIS SHEET ONLY



ILLINOIS  
 IOWA  
 WISCONSIN

G:\C3D\23\23-759\23-759 SCC\_QV.dwg

JOB NUMBER:  
 23-759

SHEET NUMBER:  
 1 of 1