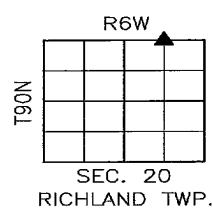
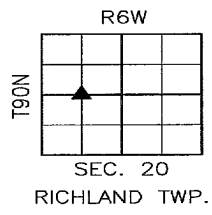
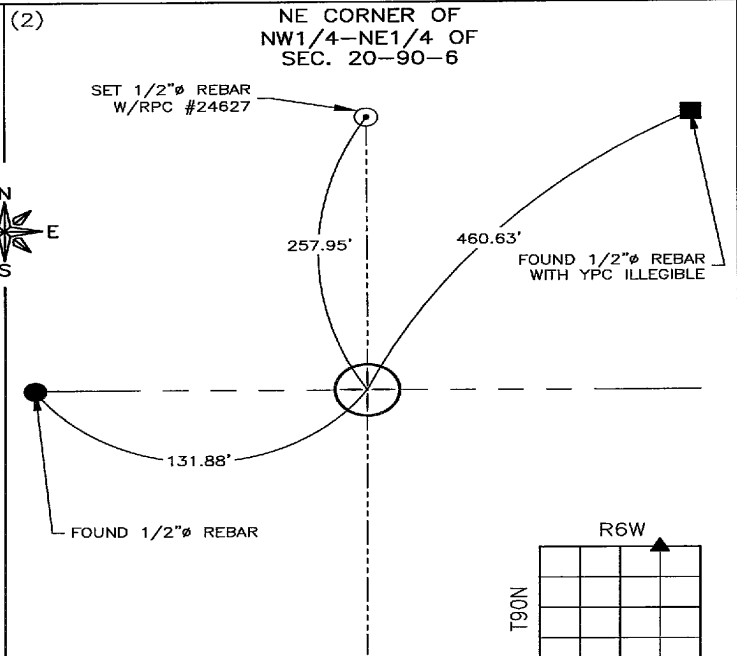
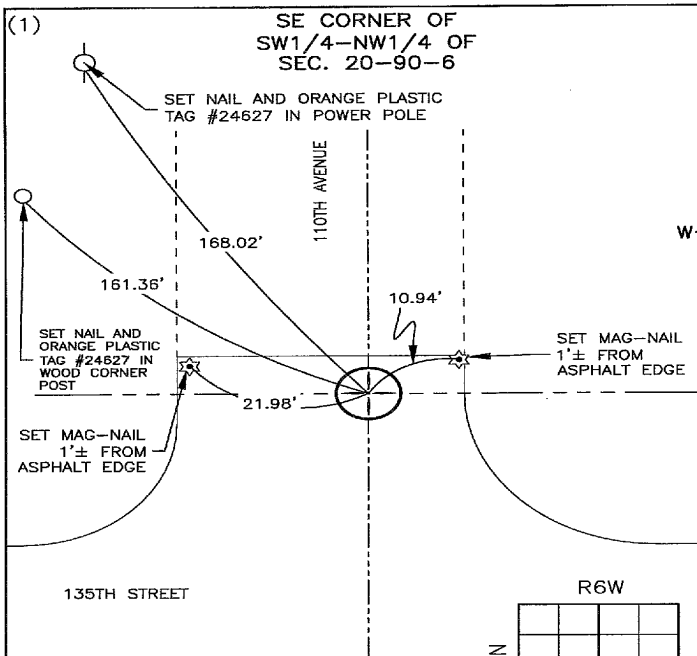


Recorded: 11/30/2023 at 10:51:19.0 AM  
 County Recording Fee: \$7.00  
 Iowa E-Filing Fee: \$3.13  
 Combined Fee: \$10.13  
 Revenue Tax:  
 Delaware County, Iowa  
 Daneen Schindler RECORDER  
 BK: 2023 PG: 3006

PREPARED BY/RETURN TO: FEHR GRAHAM, 221 EAST MAIN ST., SUITE 301 MANCHESTER, IA 52057 - PH: 563.927.2060

## UNITED STATES PUBLIC LAND SURVEY CORNER CERTIFICATE DELAWARE COUNTY, IOWA SECTION 20-T90N-R6W



**PREVIOUSLY RECORDED:**  
 IN BK. 2001, PG. 399 IN COUNTY RECORDER'S OFFICE.

**PURPOSE OF CERTIFICATE AND ESTABLISHMENT:**  
 UPDATING CERTIFICATE DUE TO MISSING TIES FROM PREVIOUS CERTIFICATE.

**MONUMENT DESCRIPTION:**  
 FOUND 3/8"Ø REBAR IN CENTER OF CUT "X" IN HMA.

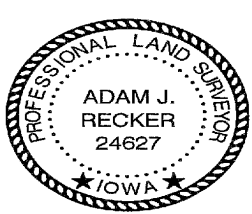
**PREVIOUSLY RECORDED:**  
 NO PREVIOUS CERTIFICATE ON FILE.

**PURPOSE OF CERTIFICATE AND ESTABLISHMENT:**  
 SET WITNESS CORNERS TO TIE OUT MONUMENT POSITION. NO CORNER MONUMENT SET DUE TO BEING IN A LIMESTONE BED OF AN ACTIVE ROCK QUARRY. CALCULATED POSITION ESTABLISHMENT AS PER INFORMATION BY PREVIOUS SURVEY OF SECTION 17 & 20 AS FILED IN BOOK 5, PAGE 163 ON FILE IN DELAWARE COUNTY RECORDER'S OFFICE, MANCHESTER, IOWA.

**MONUMENT DESCRIPTION:**  
 NO MONUMENT SET. SET WITNESS CORNERS TO HELP ESTABLISH CORNER.

**CORNERS TO BE INDEXED**

CORNER	SECTION	TOWNSHIP	RANGE
(1) SE of SW1/4-NW1/4	20	90N	6W
(2) NE of NW1/4-NE1/4	20	90N	6W



I hereby certify that this land surveying document was prepared and the related survey work was performed by me or under my direct personal supervision and that I am a duly licensed Land Surveyor under the laws of the State of Iowa.

*Adam J. Recker*      11-30-2023  
 Adam J. Recker, P.L.S.      Date  
 License Number: 24627  
 My license renewal date is December 31, 2023.  
 Sheets covered by this seal: THIS SHEET ONLY

**FEHR GRAHAM**  
 ENGINEERING & ENVIRONMENTAL  
© 2023 FEHR GRAHAM

ILLINOIS  
 IOWA  
 WISCONSIN

G:\C3D\23\23-759\23-759 SCC\_LD.dwg

	JOB NUMBER: 23-759
	SHEET NUMBER: 1 of 1