



Book 2023 Page 2817

Document 2023 2817 Type 06 007 Pages 1
Date 11/08/2023 Time 9:32:15AM
Rec Amt \$7.00

Daneen Schindler, RECORDER/REGISTRAR
DELAWARE COUNTY IOWA

dlr

PREPARED BY: RANDALL L. RATTENBORG 105 WEST MAIN STREET MANCHESTER, IA 52057, 563-927-2434

UNITED STATES PUBLIC LAND SURVEY CORNER CERTIFICATE

Land Survey Monuments situated in Section 31, Township 88 North, Range 4 West of the Fifth Principal Meridian,
Delaware County, Iowa.

Previously recorded in County Recorder's Office in CORNER TIE BOOK 2, PAGE 103

(book, page, document number, etc.)

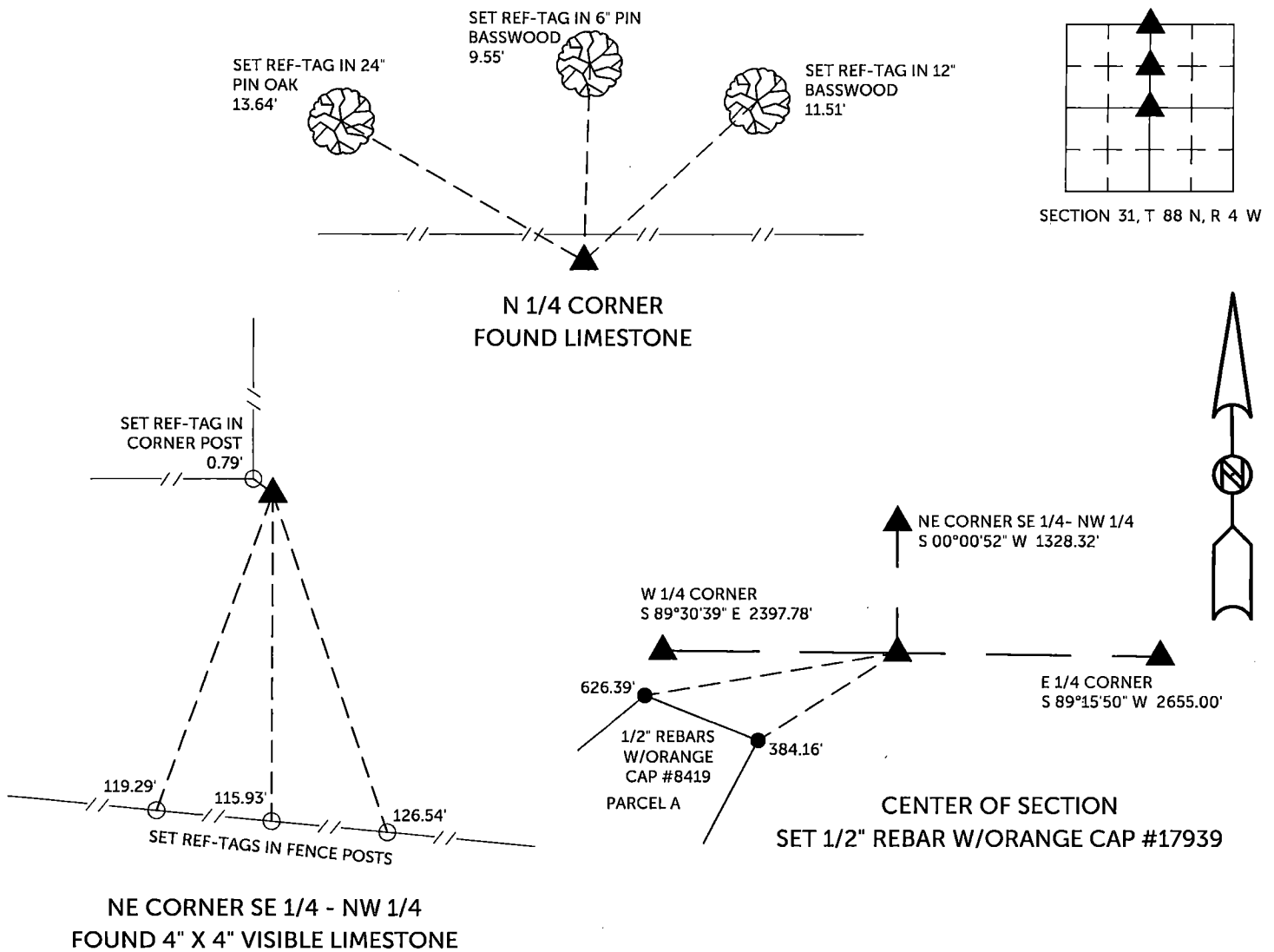
N 1/4 CORNER, Found Limestone as per corner certificate in Conrer Tie Book 2, Page 103. Corner being re-tied to update the certificate.

NE CORNER SE 1/4 - NW 1/4, Found visible 4" x 4" limestone as per County Surveyor Record Book 2, Page 98.

CENTER OF SECTION, Set 1/2" rebar w/orange cap #17939 on a line extended southerly from the N 1/4 Corner through the NE Corner SE 1/4 - NW 1/4 and at a proportional distance from the S 1/4 Corner using County Surveyor Record Book 2, Page 98.

PLAN VIEW

(Show a minimum of three reference ties to durable physical objects, relevant monuments and physical conditions that will enable recovery of the corner.)

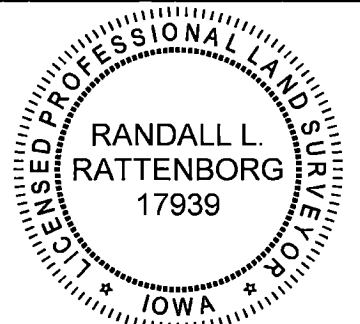


TIES ARE TO PLAT PARCEL 2023-90 & 91
IN SECTION 31, T 88 N, R 4 W

BURRINGTON GROUP, INC. PROJECT NO. 23-135

I HEREBY CERTIFY THAT THIS LAND SURVEYING DOCUMENT
WAS PREPARED BY ME OR UNDER MY DIRECT PERSONAL
SUPERVISION AND THAT I AM A DULY LICENSED PROFESSIONAL
LAND SURVEYOR UNDER THE LAWS OF THE STATE OF IOWA.

SEAL COVERS THIS SHEET ONLY



[Signature] *11/7/2023*
 Randall L. Rattenborg, P.L.S. License #17939 Date
 My license renewal date is December 31, 2023
 List Corners to be Indexed: Section Township Range

N 1/4 CORNER	31	T 88N	R 4 W
NE CORNER SE 1/4 - NW 14			
CENTER OF SECTION			

BURRINGTON GROUP, INC.
 Civil Engineering | Land Surveying
 105 W. Main Street Manchester, Iowa 52057