



Book 2023 Page 2423

Document 2023 2423 Type 06 007 Pages 1
Date 9/26/2023 Time 3:22:10PM
Rec Amt \$7.00

Daneen Schindler, RECORDER/REGISTRAR
DELAWARE COUNTY IOWA

RL

PREPARED BY: RANDALL L. RATTENBORG 105 WEST MAIN STREET MANCHESTER, IA 52057, 563-927-2434

UNITED STATES PUBLIC LAND SURVEY CORNER CERTIFICATE

Land Survey Monuments situated in Section 13, Township 89 North, Range 6 West of the Fifth Principal Meridian,
Delaware County, Iowa.

Previously recorded in County Recorder's Office in None
(book, page, document number, etc.)

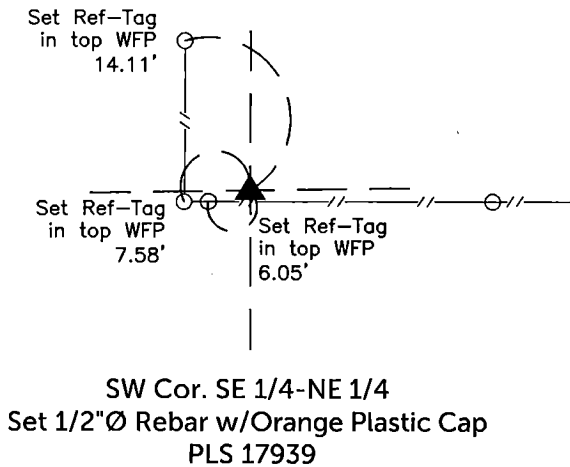
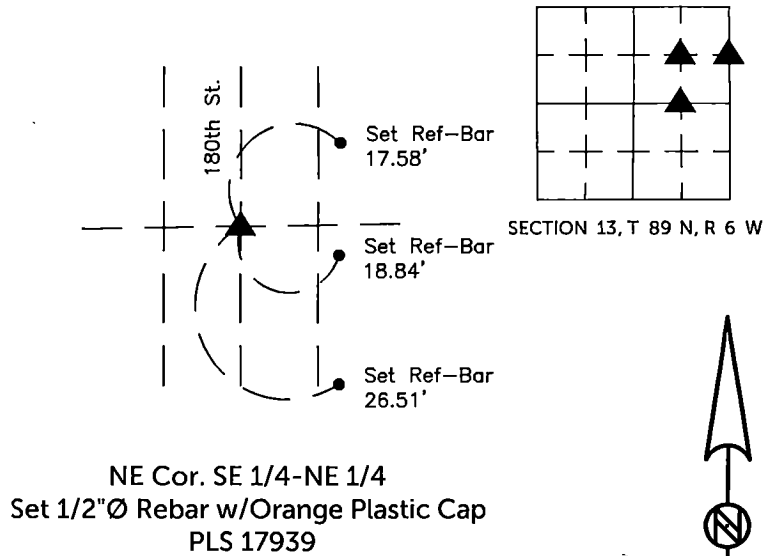
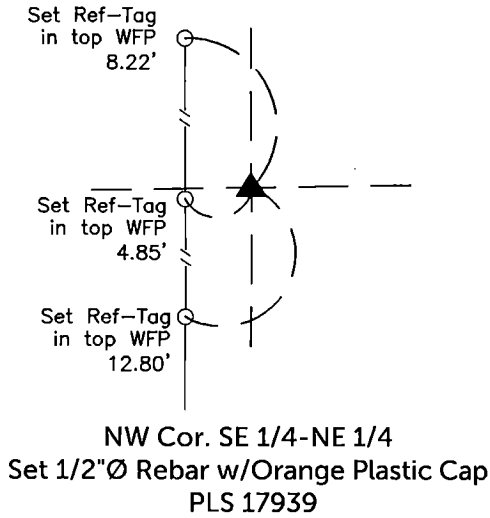
NW Corner SE 1/4-NE 1/4, Set 1/2"Ø rebar with orange plastic cap PLS 17939 based upon the subdivision of the Northeast Quarter.

NE Corner SE 1/4-NE 1/4, Set 1/2"Ø rebar with orange plastic cap PLS 17939 based upon the subdivision of the Northeast Quarter.

SW Corner SE 1/4-NE 1/4, Set 1/2"Ø rebar with orange plastic cap PLS 17939 based upon the subdivision of the Northeast Quarter.

PLAN VIEW

(Show a minimum of three reference ties to durable physical objects, relevant monuments and physical conditions that will enable recovery of the corner.)

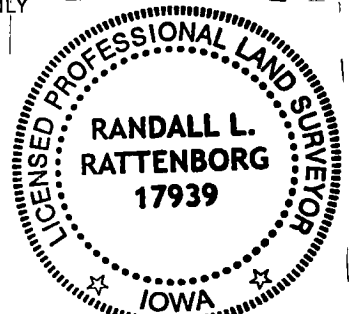


TIES ARE TO PLAT New House Subdivision
IN SECTION 13, T 89 N, R 6 W

BURRINGTON GROUP, INC. PROJECT NO. 22-176

I HEREBY CERTIFY THAT THIS LAND SURVEYING DOCUMENT WAS PREPARED AND THE RELATED SURVEY WORK WAS PERFORMED BY ME OR UNDER MY DIRECT PERSONAL SUPERVISION AND THAT I AM A DULY LICENSED PROFESSIONAL LAND SURVEYOR UNDER THE LAWS OF THE STATE OF IOWA.

SEAL COVERS THIS SHEET ONLY



RL 9/18/2023

Randall L. Rattenborg, P.L.S. License #17939 Date
My license renewal date is December 31, 2023

List Corners to be Indexed:	Section	Township	Range
NW Cor. SE 1/4-NE 1/4	13	T 89N	R 6 W
NE Cor. SE 1/4-NE 1/4			
SW Cor. SE 1/4-NE 1/4			

BURRINGTON GROUP, INC.
Civil Engineering | Land Surveying
105 W. Main Street Manchester, Iowa 52057