



Daneen Schindler, RECORDER/REGISTRAR  
DELAWARE COUNTY IOWA

*DRW*  
MOHN SURVEYING INC. ROGER R. MOHN 1890 GREAT RIVER ROAD LANSING, IOWA 52151 (563) 538-4067

TIES. DWG D. Ross

SLSI 9-90

UNITED STATES PUBLIC LAND SURVEY CORNER CERTIFICATE

OF

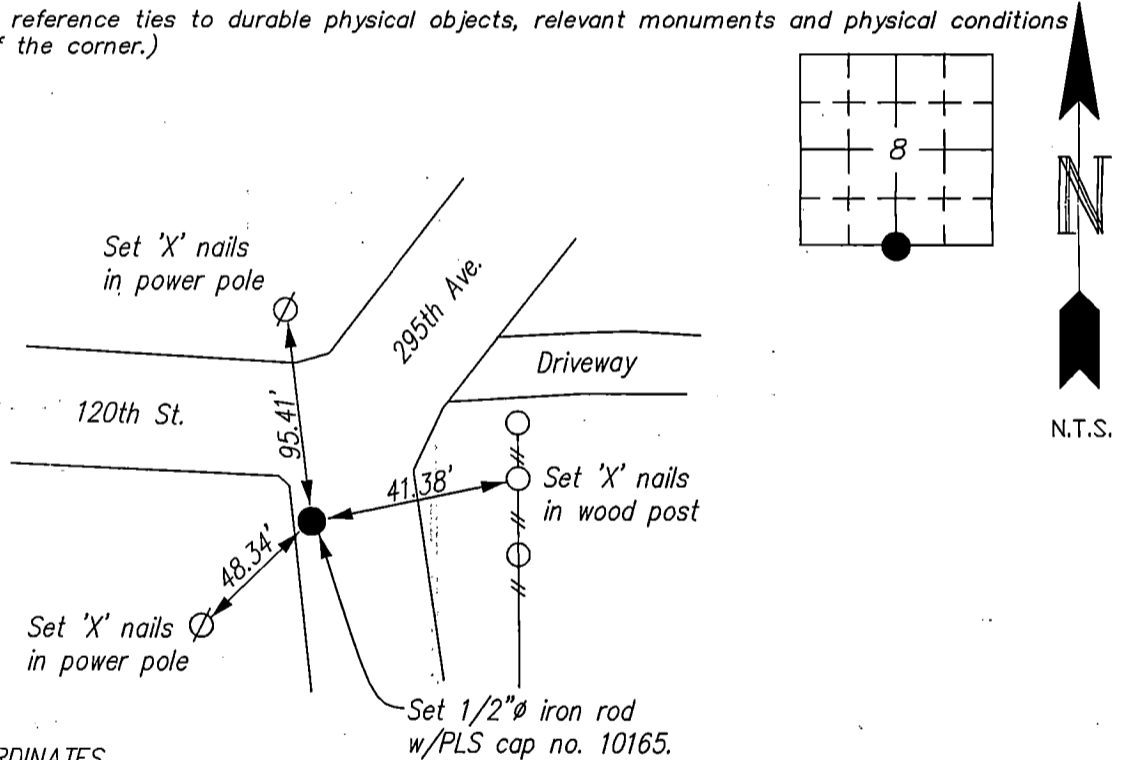
Land Survey Monuments situated in Section 8, Township 90 North, Range 3 West, of the Fifth Principal Meridian, Delaware County, Iowa. Previously recorded in no record on file in County Recorder's Office.  
(book, page, document number, etc.)

(Show reason for preparing this certificate, the evidence and detailed procedures used in establishing the corner positions and monumentation found or placed.)

Monument Description and Remarks: Found no record of previous corner monumentation after original government survey. Established the corner position by extending the south line of the SE1/4 from the SE corner of Sec. 8 through the SW corner of the SE1/4-SE1/4 of Section 8 and at equal distance. Checked established corner position by extending the north-south 1/4 section line of Sec. 17 from S1/4 Corner through center of Section 17. Searched area with magnetic locator but found nothing. Set 1/2" ø iron rod with PLS cap no. 10165 at the computed position.

PLAN - VIEW

(Show a minimum of three reference ties to durable physical objects, relevant monuments and physical conditions that will enable recovery of the corner.)



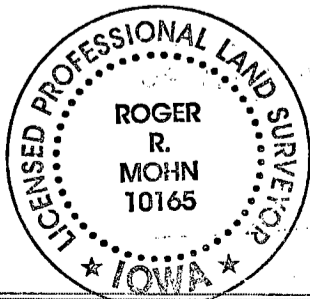
GRID STATE PLANE COORDINATES

N=3696107.83 E=5534087.66

Coordinates are based on the Iowa State Plane Coordinate System North Zone (1401) Horizontal NAD 83 (2011).

I hereby certify that this land surveying document was prepared by me or under my direct personal supervision and that I am a duly Registered Land Surveyor under the laws of the state of Iowa.

*Roger R. Mohn* 8/19, 2023  
ROGER R. MOHN, P.E. & L.S. Iowa Registration No. 10165  
My registration expires December 31, 2024



List Corners to be Indexed			
Corners	Section	Twp	Range
South 1/4 Cor.	8	90N	3W