



Book 2023 Page 2050

Document 2023 2050 Type 06 007 Pages 1
Date 8/25/2023 Time 8:25:33AM
Rec Amt \$7.00

Daneen Schindler, RECORDER/REGISTRAR
DELAWARE COUNTY IOWA

PREPARED BY: RANDALL L. RATTENBORG 105 WEST MAIN STREET MANCHESTER, IA 52057, 563-927-2434

UNITED STATES PUBLIC LAND SURVEY CORNER CERTIFICATE

Land Survey Monuments situated in Section 15, Township 89 North, Range 4 West of the Fifth Principal Meridian,
Delaware County, Iowa.

Previously recorded in County Recorder's Office in _____ See Descriptions Below
(book, page, document number, etc.)

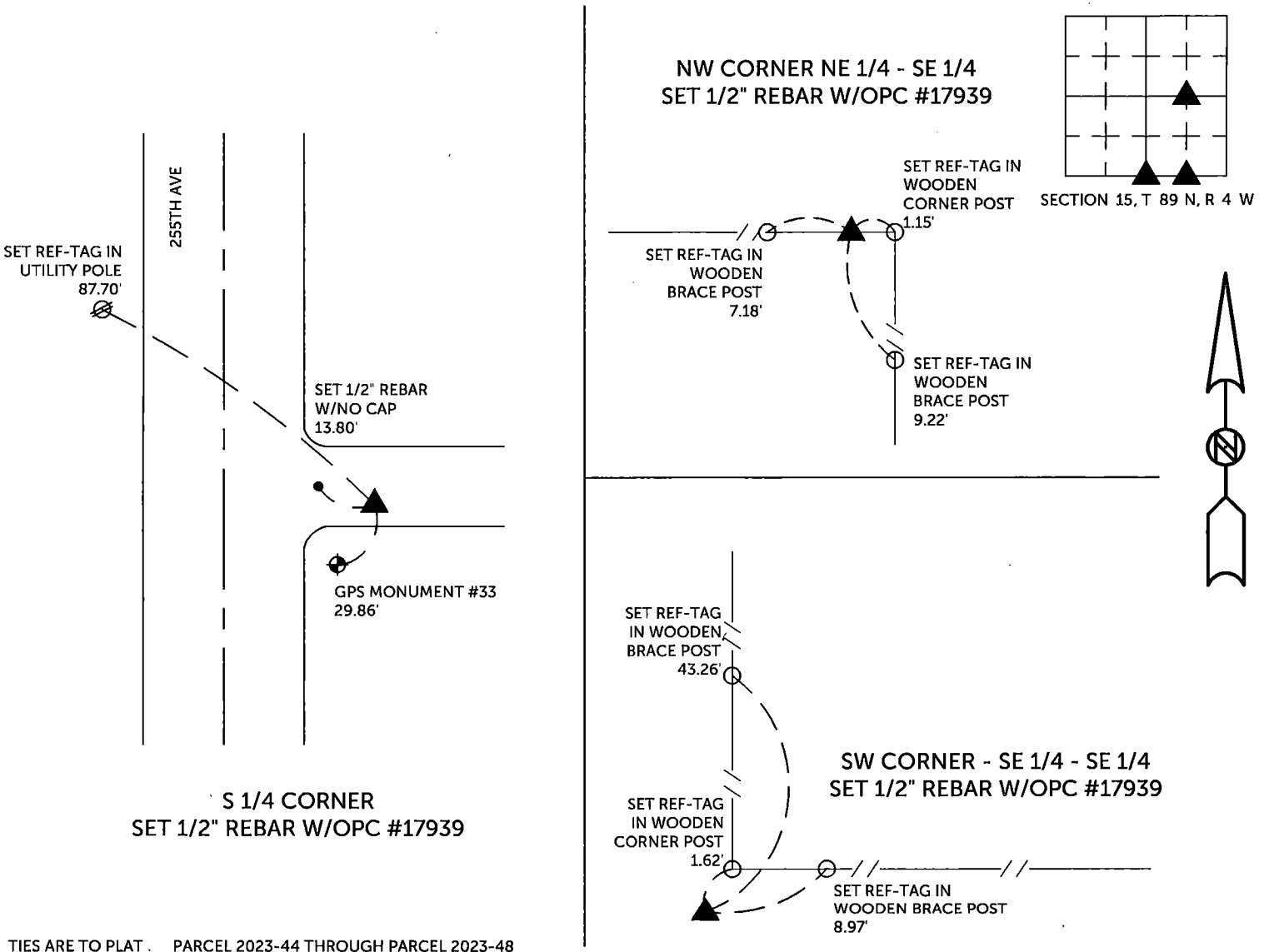
S 1/4 Corner: Set 1/2" rebar w/orange cap #17939. Used geometry from Plat of Parcel A recorded in Book 2004, Page 3987 to set new monument in same location as previously set 1/2" rebar w/orange cap #8419, as per Book 2004, Page 3986. The previous monument and tie objects were missing due to fences being removed.

NW Corner NE 1/4 - SE 1/4: Set 1/2" rebar w/orange cap #17939 at theoretical location after breaking down the section. This location fits the fence corner.

SW CORNER SE 1/4 - SE 1/4: Set 1/2" rebar w/orange cap #17939 at the mathematical location. This location fits the field evidence.

PLAN VIEW


(Show a minimum of three reference ties to durable physical objects, relevant monuments and physical conditions that will enable recovery of the corner.)



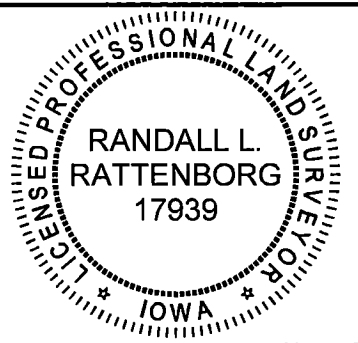
TIES ARE TO PLAT . PARCEL 2023-44 THROUGH PARCEL 2023-48
IN SECTION 15, T 89 N, R 4 W

BURRINGTON GROUP, INC. PROJECT NO. 23-080

I HEREBY CERTIFY THAT THIS LAND SURVEYING DOCUMENT
WAS PREPARED AND THE RELATED SURVEY WORK WAS
PERFORMED BY ME OR UNDER MY DIRECT PERSONAL
SUPERVISION AND THAT I AM A DULY LICENSED PROFESSIONAL
LAND SURVEYOR UNDER THE LAWS OF THE STATE OF IOWA.

 8/24/2023
 Randall L. Rattenborg, P.L.S. License #17939 Date
 My license renewal date is December 31, 2023
 List Corners to be Indexed: Section Township Range
 S 1/4 CORNER 15 T 89N R 4 W
 NW CORNER - NE 1/4 - SE 1/4
 SE CORNER - SE 1/4 - SE 1/4

SEAL COVERS THIS SHEET ONLY



 **BURRINGTON GROUP, INC.**
 Civil Engineering | Land Surveying
 105 W. Main Street Manchester, Iowa 52057