



Book 2023 Page 2049

Document 2023 2049 Type 06 007 Pages 1
Date 8/25/2023 Time 8:25:21AM
Rec Amt \$7.00

Daneen Schindler, RECORDER/REGISTRAR
DELAWARE COUNTY IOWA

PREPARED BY: RANDALL L. RATTENBORG 105 WEST MAIN STREET MANCHESTER, IA 52057, 563-927-2434

UNITED STATES PUBLIC LAND SURVEY CORNER CERTIFICATE

Land Survey Monuments situated in Section 14, Township 89 North, Range 4 West of the Fifth Principal Meridian,
Delaware County, Iowa.

Previously recorded in County Recorder's Office in See Descriptions Below
(book, page, document number, etc.)

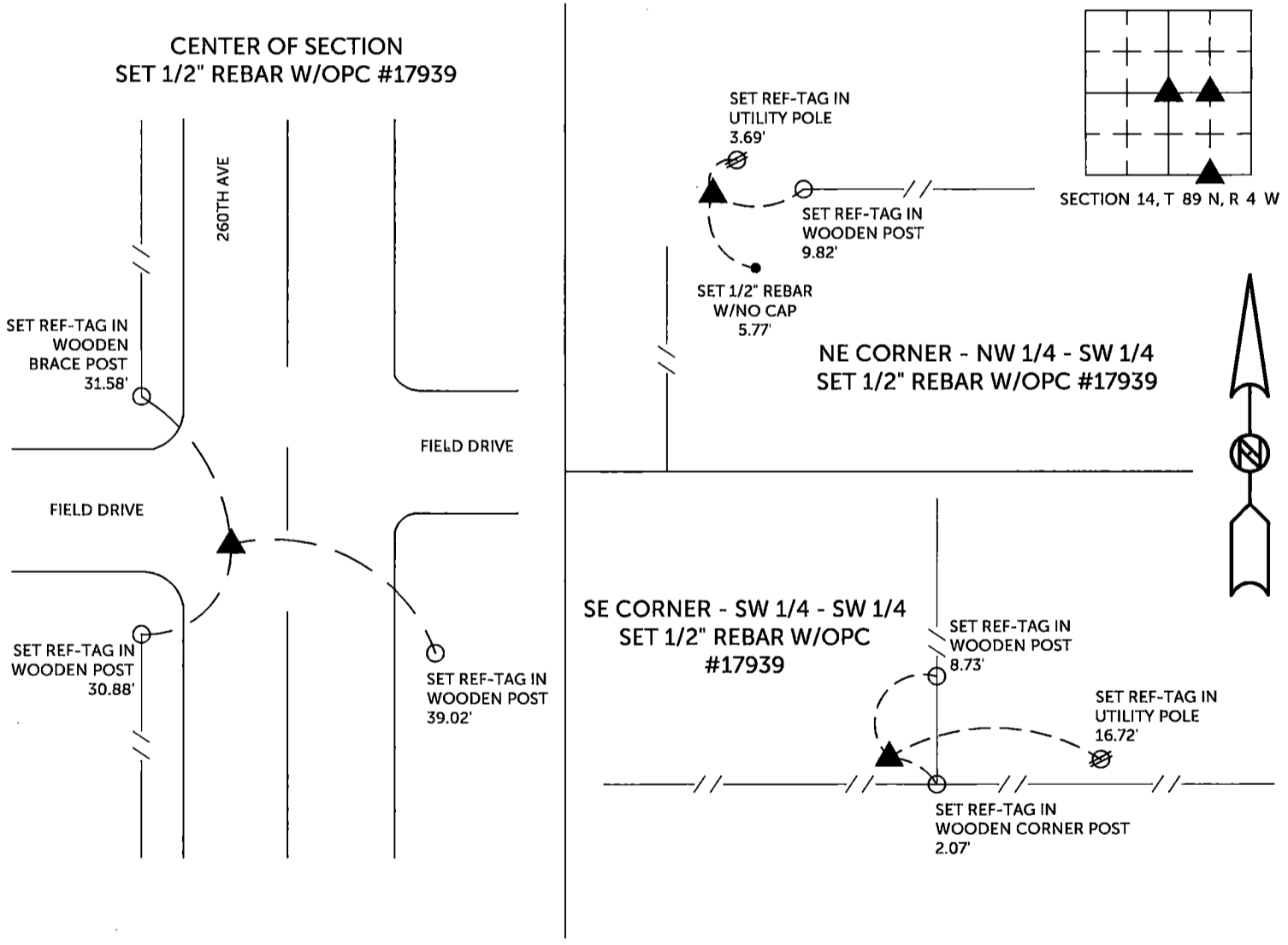
Center of Section: Set 1/2" rebar w/orange cap #17939 on a line from the W 1/4 Corner to a fence corner on the east side of 265th Avenue in the center of section area. Used the fence corner at the NW Corner of the North 5 Acres of the East 15 Acres and went 495 feet east to intersect this line to set this corner. Using the road centerlines and the theoretical location does not fit.

NE Corner NW 1/4 - SW 1/4: Set 1/2" rebar w/orange cap #17939 at the mathematical location. This location fits the field evidence.

SE Corner SW 1/4 - SW 1/4: Set 1/2" rebar w/orange cap #17939 one rod (16.5') west of the theoretical / mathematical location. This location fits the fence evidence.

PLAN VIEW

(Show a minimum of three reference ties to durable physical objects, relevant monuments and physical conditions that will enable recovery of the corner.)

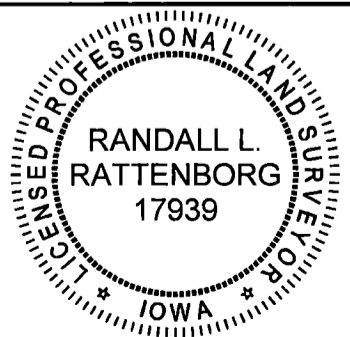


TIES ARE TO PLAT PARCEL 2023-44 THROUGH PARCEL 2023-48
IN SECTION 14, T 89 N, R 4 W

BURRINGTON GROUP, INC. PROJECT NO. 23-080

I HEREBY CERTIFY THAT THIS LAND SURVEYING DOCUMENT WAS PREPARED AND THE RELATED SURVEY WORK WAS PERFORMED BY ME OR UNDER MY DIRECT PERSONAL SUPERVISION AND THAT I AM A DULY LICENSED PROFESSIONAL LAND SURVEYOR UNDER THE LAWS OF THE STATE OF IOWA.

SEAL COVERS THIS SHEET ONLY



[Signature] 8/24/2023
 Randall L. Rattenborg, P.L.S. License #17939 Date
 My license renewal date is December 31, 2023

List Corners to be Indexed:	Section	Township	Range
CENTER OF SECTION	14	T 89N	R 4 W
NE CORNER - NW 1/4 - SW 1/4			
SE CORNER - SW 1/4 - SE 1/4			

BURRINGTON GROUP, INC.
 Civil Engineering | Land Surveying
 105 W. Main Street Manchester, Iowa 52057