



Daneen Schindler, RECORDER/REGISTRAR
DELAWARE COUNTY IOWA

PREPARED BY: RANDALL L. RATTENBORG 105 WEST MAIN STREET MANCHESTER, IA 52057, 563-927-2434

UNITED STATES PUBLIC LAND SURVEY CORNER CERTIFICATE

Land Survey Monuments situated in Section 14 , Township 89 North, Range 4 West of the Fifth Principal Meridian,
Delaware County, Iowa.

Previously recorded in County Recorder's Office in _____ See Descriptions Below

(book, page, document number, etc.)

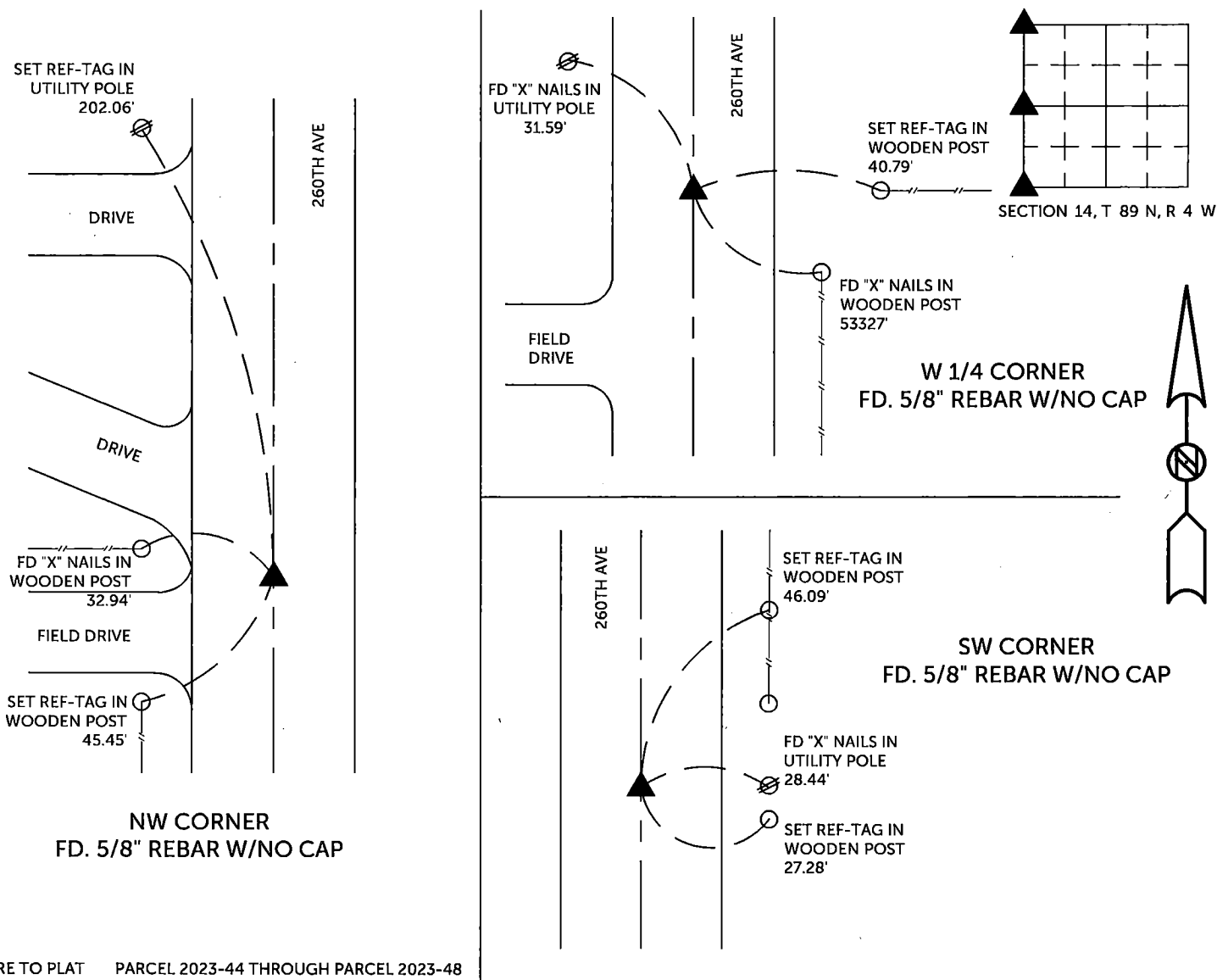
NW Corner: Found 5/8" rebar with no cap as recorded in Corner Tie Bk. 2004, Pg. 1009.

W 1/4 Corner: Found 5/8" rebar with no cap as recorded in Corner Tie Bk. 2004, Pg. 1009.

SW Corner: Found 5/8" rebar with no cap as recorded in Corner Tie Bk. 2004, Pg. 1009.

PLAN VIEW

(Show a minimum of three reference ties to durable physical objects, relevant monuments and physical conditions that will enable recovery of the corner.)

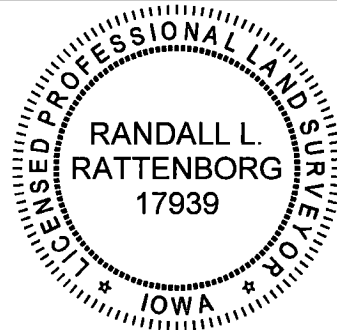


TIES ARE TO PLAT PARCEL 2023-44 THROUGH PARCEL 2023-48
IN SECTION 14, T 89 N, R 4 W

BURRINGTON GROUP, INC. PROJECT NO. 23-080

I HEREBY CERTIFY THAT THIS LAND SURVEYING DOCUMENT
WAS PREPARED AND THE RELATED SURVEY WORK WAS
PERFORMED BY ME OR UNDER MY DIRECT PERSONAL
SUPERVISION AND THAT I AM A DULY LICENSED PROFESSIONAL
LAND SURVEYOR UNDER THE LAWS OF THE STATE OF IOWA.

SEAL COVERS THIS SHEET ONLY



[Signature] 8/24/2023

Randall L. Rattenborg, P.L.S. License #17939 Date
My license renewal date is December 31, 2023

List Corners to be Indexed: Section Township Range

NW CORNER	14	T 89N	R 4 W
W 1/4 CORNER			
SW CORNER			

BURRINGTON GROUP, INC.
Civil Engineering | Land Surveying
105 W. Main Street Manchester, Iowa 52057