



Book 2023 Page 1744

Document 2023 1744 Type 06 007 Pages 1
Date 7/26/2023 Time 3:06:59PM
Rec Amt \$7.00

Daneen Schindler, RECORDER/REGISTRAR
DELAWARE COUNTY IOWA

Handwritten initials

PREPARED BY: RANDALL L. RATTENBORG 105 WEST MAIN STREET MANCHESTER, IA 52057, 563-927-2434

UNITED STATES PUBLIC LAND SURVEY CORNER CERTIFICATE

Land Survey Monuments situated in Section 30, Township 89 North, Range 5 West of the Fifth Principal Meridian,
Delaware County, Iowa.

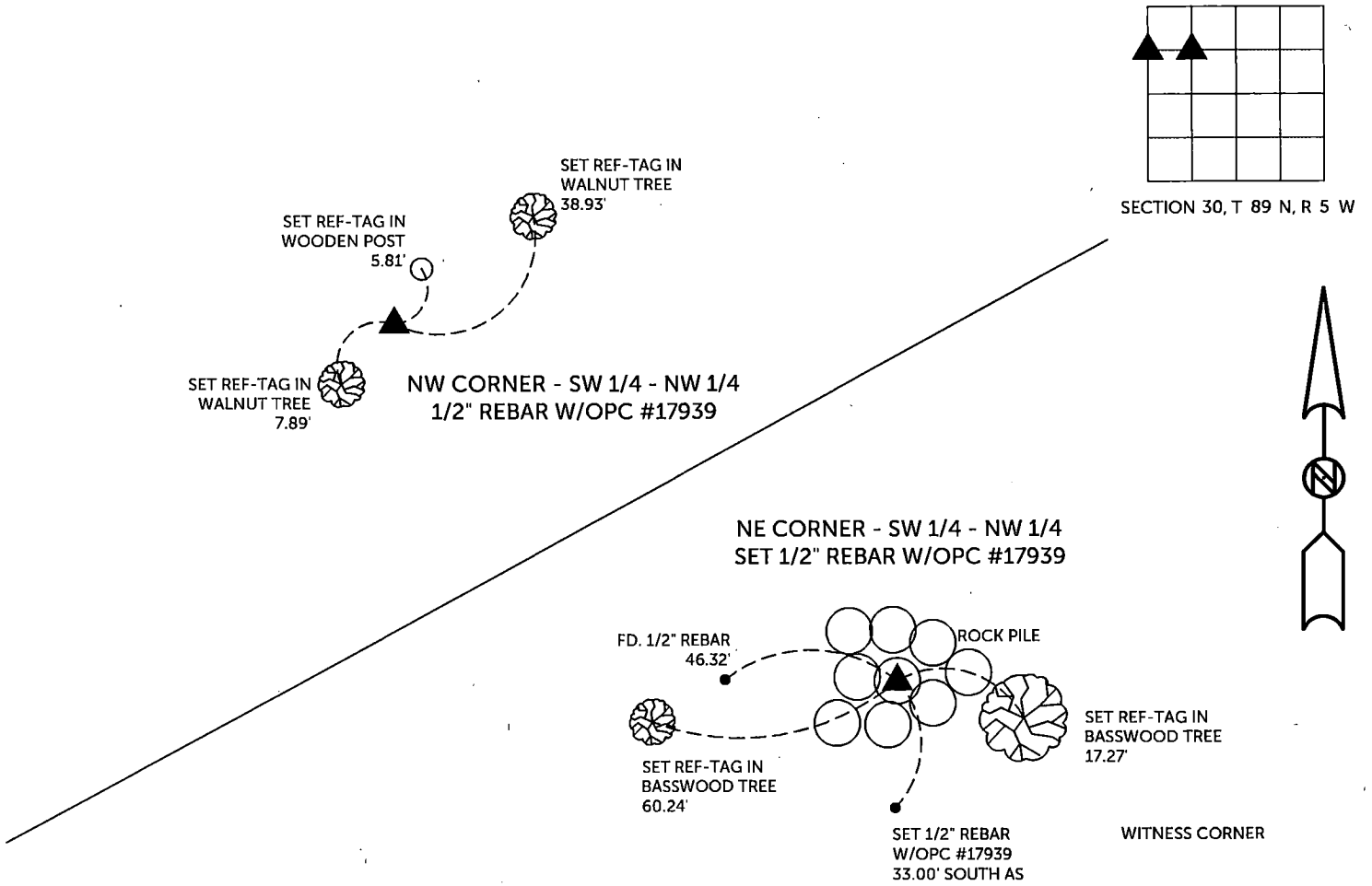
Previously recorded in County Recorder's Office in See Descriptions Below
(book, page, document number, etc.)

NW CORNER SW 1/4 - NW 1/4, Set 1/2" rebar w/orange cap #17939 using the geometry from the Plat of Parcels A and B recorded in Plat Book 7, Page 173. The area has been disturbed and the original monument and ties from Corner Tie Book 2, Page 2 are missing.

NE CORNER SW 1/4 - NW 1/4, Set 1/2" rebar w/orange cap #17939. Set monument at the intersection of north line of the Plat of Parcel B recorded in Plat Book 7, Page 173 and an offset line 33' east of the east line of Parcels A and B for the East 1 acre of the SW 1/4- NW 1/4. This location falls in a rock pile, a witness corner was set 33' south and on the East line of the SW 1/4 - NW 1/4.

PLAN VIEW

(Show a minimum of three reference ties to durable physical objects, relevant monuments and physical conditions that will enable recovery of the corner.)

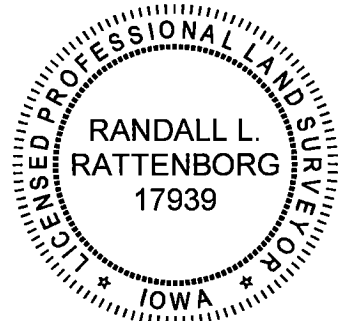


TIES ARE TO PLAT PARCEL 2023 - 60, PARCEL 2023 - 61, PARCEL 2023 - 62
IN SECTION 30, T 89 N, R 5 W

BURRINGTON GROUP, INC. PROJECT NO. 23-058

I HEREBY CERTIFY THAT THIS LAND SURVEYING DOCUMENT WAS PREPARED AND THE RELATED SURVEY WORK WAS PERFORMED BY ME OR UNDER MY DIRECT PERSONAL SUPERVISION AND THAT I AM A DULY LICENSED PROFESSIONAL LAND SURVEYOR UNDER THE LAWS OF THE STATE OF IOWA.

SEAL COVERS THIS SHEET ONLY



Handwritten Signature 7/24/2023
 Date
 Randall L. Rattenborg, P.L.S. License #17939
 My license renewal date is December 31, 2023

List Corners to be Indexed:	Section	Township	Range
NW CORNER - SW 1/4 - NW 1/4	30	T 89N	R 5 W
NE CORNER - SW 1/4 - NW 1/4			

BURRINGTON GROUP, INC.
 Civil Engineering | Land Surveying
 105 W. Main Street Manchester, Iowa 52057