



Book 2023 Page 1743

Document 2023 1743 Type 06 007 Pages 1
Date 7/26/2023 Time 3:06:46PM
Rec Amt \$7.00

Daneen Schindler, RECORDER/REGISTRAR
DELAWARE COUNTY IOWA

RLS

PREPARED BY: RANDALL L. RATTENBORG 105 WEST MAIN STREET MANCHESTER, IA 52057, 563-927-2434

UNITED STATES PUBLIC LAND SURVEY CORNER CERTIFICATE

Land Survey Monuments situated in Section 30, Township 89 North, Range 5 West of the Fifth Principal Meridian,
Delaware County, Iowa.

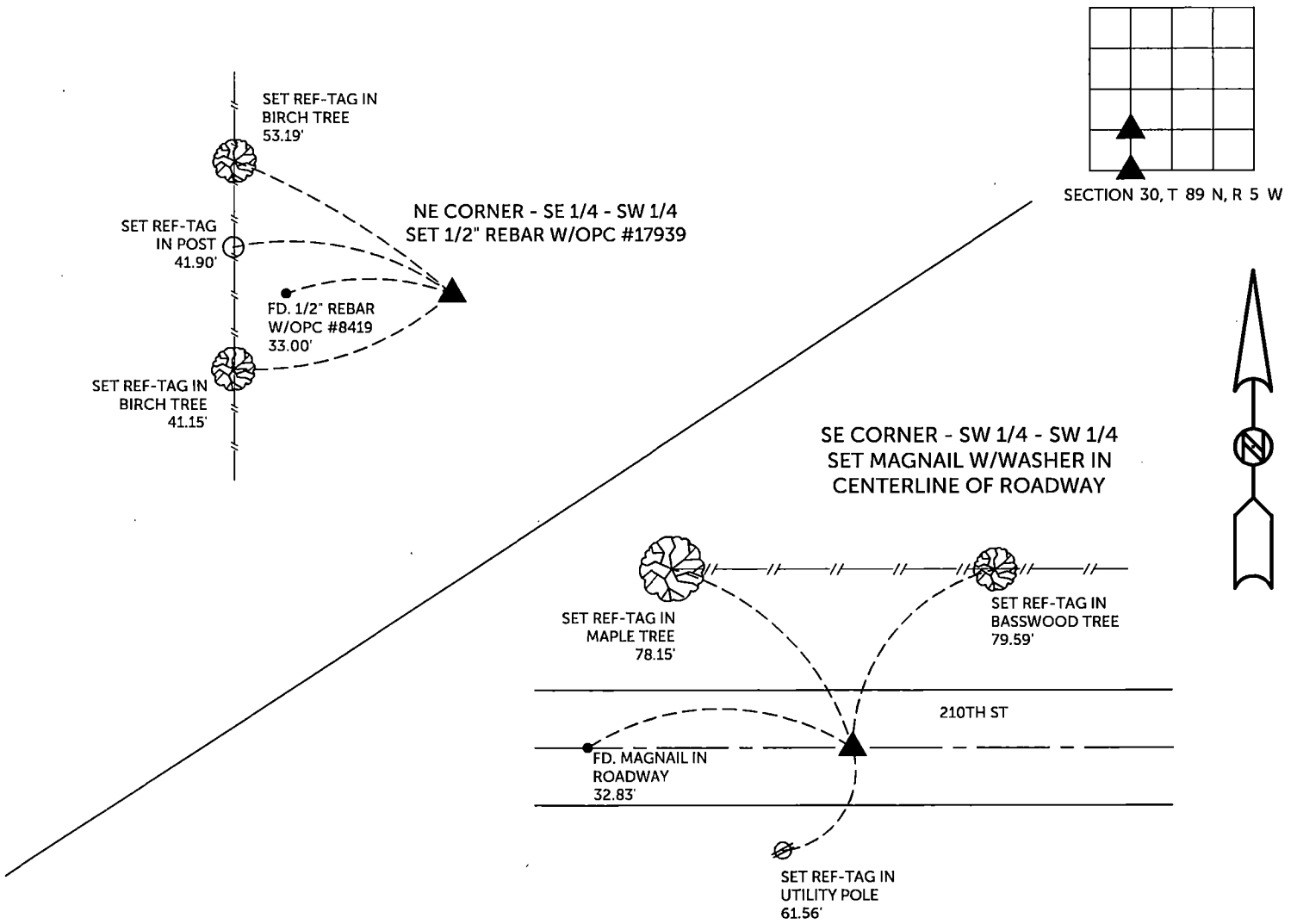
Previously recorded in County Recorder's Office in See Descriptions Below
(book, page, document number, etc.)

NE CORNER SW 1/4 - SW 1/4, Set 1/2" rebar w/orange cap #17939 on the north line of Lot E of Kehrl's Farmstead 5th Subdivision, recorded in Book 2021, Page 1638, at the intersection of this north line with an offset line 33' east of the east line of Parcel A, recorded in Plat Book 7, Page 173, for the East 1 acre of the SW 1/4- SW 1/4.

SE CORNER SW 1/4 - SW 1/4, Set magnail w/steel cap #17939 at the intersection of the section line between the SW Corner and the S 1/4 Corner and an offset line 33' east of the east line of Parcel A, recorded in Plat Book 7, Page 173, for the East 1 acre of the SW 1/4- SW 1/4.

PLAN VIEW

(Show a minimum of three reference ties to durable physical objects, relevant monuments and physical conditions that will enable recovery of the corner.)



TIES ARE TO PLAT PARCEL 2023 - 60, PARCEL 2023 - 61, PARCEL 2023 - 62
IN SECTION 30, T 89 N, R 5 W

BURRINGTON GROUP, INC. PROJECT NO. 23-058

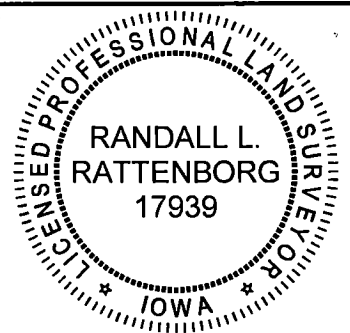
I HEREBY CERTIFY THAT THIS LAND SURVEYING DOCUMENT WAS PREPARED AND THE RELATED SURVEY WORK WAS PERFORMED BY ME OR UNDER MY DIRECT PERSONAL SUPERVISION AND THAT I AM A DULY LICENSED PROFESSIONAL LAND SURVEYOR UNDER THE LAWS OF THE STATE OF IOWA.

SEAL COVERS THIS SHEET ONLY

RLS 7/24/2023

Randall L. Rattenborg, P.L.S. License #17939 Date
My license renewal date is December 31, 2023

List Corners to be Indexed: Section Township Range



NE CORNER - SW 1/4 - SW 1/4 30 T 89N R 5 W
SE CORNER - SW 1/4 - SW 1/4

BURRINGTON GROUP, INC.
Civil Engineering | Land Surveying
105 W. Main Street Manchester, Iowa 52057