



Book 2023 Page 1712

Document 2023 1712 Type 06 007 Pages 1  
Date 7/24/2023 Time 12:10:32PM  
Rec Amt \$7.00

Daneen Schindler, RECORDER/REGISTRAR  
DELAWARE COUNTY IOWA

PREPARED BY *RLR* RANDALL L. RATTENBORG 105 WEST MAIN STREET MANCHESTER, IA 52057, 563-927-2434

# UNITED STATES PUBLIC LAND SURVEY CORNER CERTIFICATE

Land Survey Monuments situated in Section 22, Township 89 North, Range 5 West of the Fifth Principal Meridian,  
Delaware County, Iowa.

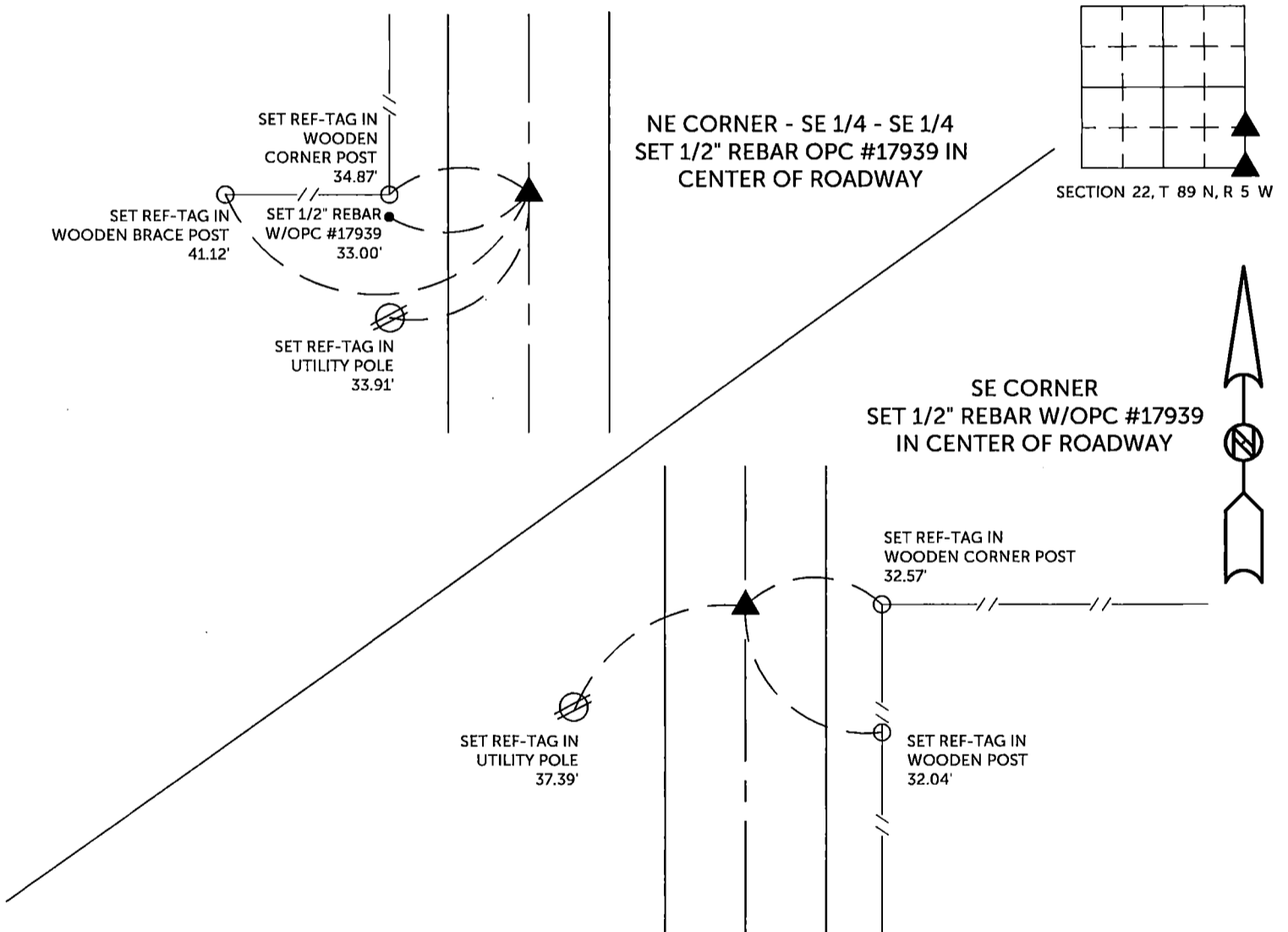
Previously recorded in County Recorder's Office in \_\_\_\_\_ **Not Recorded**  
(book, page, document number, etc.)

NE CORNER SE 1/4 - SE 1/4: Set 1/2" rebar w/orange cap #17939 proportionate between the SE Corner and the E 1/4 Corner.

SE CORNER: Set 1/2" rebar w/orange cap #17939 using the fence to the east and the centerline of the 200th Avenue. The centerline of 200th Avenue is established on the section line and the geometry of the road centerline takes a slight bend at this location also.

## PLAN VIEW

(Show a minimum of three reference ties to durable physical objects, relevant monuments and physical conditions that will enable recovery of the corner.)



TIES ARE TO PLAT RETRACEMENT PLAT IN SE 1/4 - SE 1/4  
IN SECTION 22, T 89 N, R 5 W

BURRINGTON GROUP, INC. PROJECT NO. 23-054

I HEREBY CERTIFY THAT THIS LAND SURVEYING DOCUMENT WAS PREPARED AND THE RELATED SURVEY WORK WAS PERFORMED BY ME OR UNDER MY DIRECT PERSONAL SUPERVISION AND THAT I AM A DULY LICENSED PROFESSIONAL LAND SURVEYOR UNDER THE LAWS OF THE STATE OF IOWA.

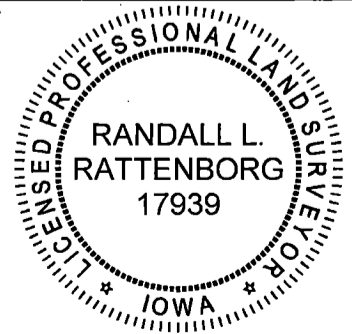
*RLR* 7/24/2023

Randall L. Rattenborg, P.L.S. License #17939 Date  
My license renewal date is December 31, 2023

List Corners to be Indexed: Section Township Range

NE CORNER - SE 1/4 - SE 1/4	22	T 89N	R 5 W
SE CORNER			

SEAL COVERS THIS SHEET ONLY



**BURRINGTON GROUP, INC.**  
Civil Engineering | Land Surveying  
105 W. Main Street Manchester, Iowa 52057