



Book 2023 Page 1678

Document 2023 1678 Type 06 007 Pages 1  
Date 7/19/2023 Time 9:48:20AM  
Rec Amt \$.00

**W**  
PREPARED BY: WYATT B. ANDERSON,  
DELAWARE COUNTY ENGINEER'S OFFICE, 2139  
HIGHWAY 38, MANCHESTER, IOWA 52057,  
PH: 563-927-3505

Daneen Schindler, RECORDER/REGISTRAR  
DELAWARE COUNTY IOWA

## UNITED STATES PUBLIC LAND SURVEY CORNER CERTIFICATE OF

LAND SURVEY MONUMENTS SITUATED IN SECTION 19, TOWNSHIP 87 NORTH, RANGE 6 WEST OF THE FIFTH  
PRINCIPAL MERIDIAN, DELAWARE COUNTY, IOWA.  
PREVIOUSLY RECORDED IN BOOK 2, PAGE 148 IN COUNTY RECORDER'S OFFICE.  
(book, page, document number, etc.)

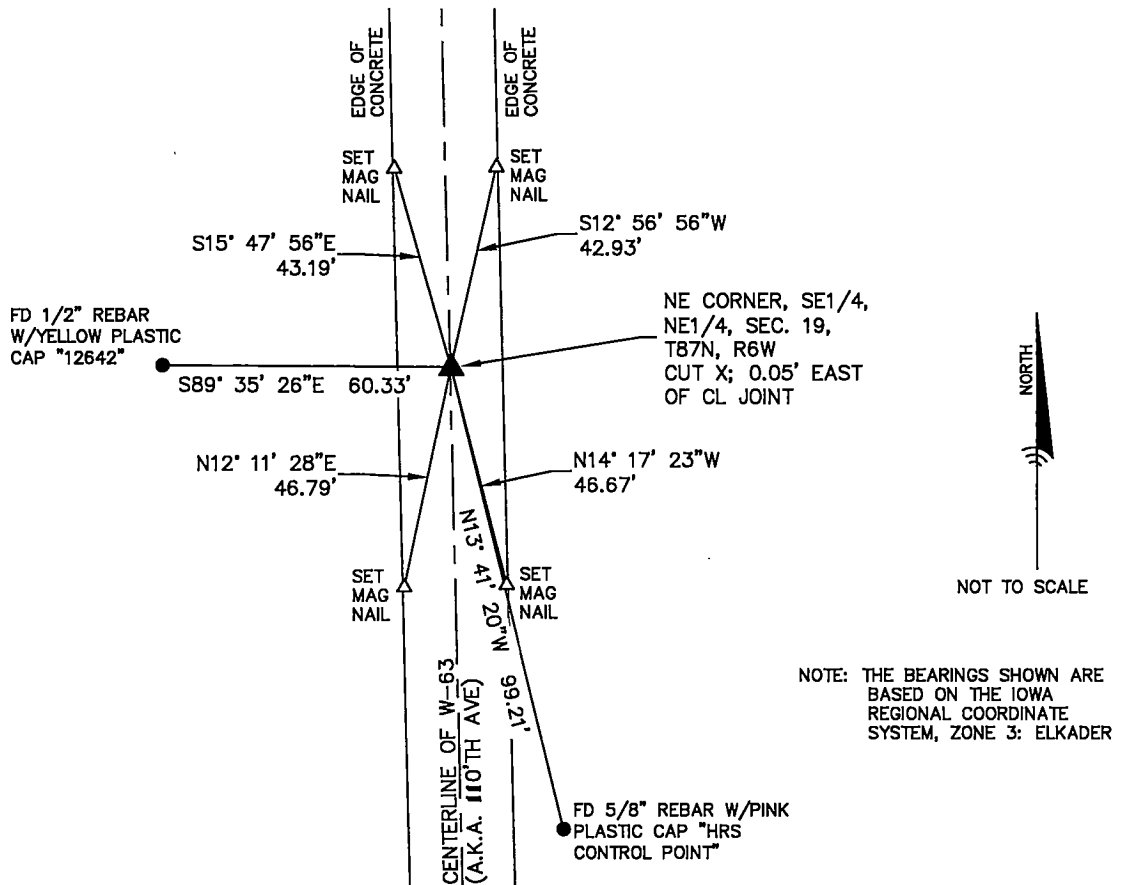
(Show reason for preparing this certificate, the evidence and detailed procedures used in establishing the  
corner positions and monumentation found or placed.)

Monument Description and Remarks:

- I FOUND A MAG NAIL IN THE OLD CONCRETE PAVEMENT AT THE NORTHEAST CORNER OF THE SOUTHEAST  
1/4 OF THE NORTHEAST 1/4 OF SECTION 19. W-63 WAS OVERLAYED WITH CONCRETE AND I CUT AN "X"  
AT THE SAID CORNER.

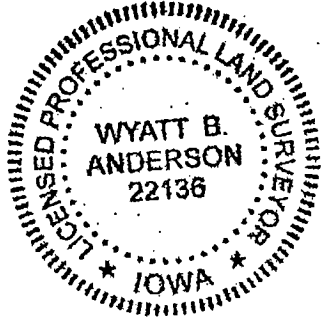
### PLAN - VIEW

(Show a minimum of three reference ties to durable physical objects, relevant monuments and physical  
conditions that will enable recovery of the corner.)



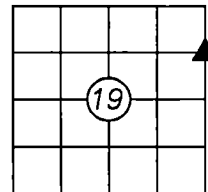
### DELAWARE COUNTY ENGINEER'S OFFICE

2139 HIGHWAY 38  
MANCHESTER, IOWA 52057  
PHONE: (563) 927-3505



#### List Corners to be Indexed

Corners	Section	Twp	Range
NE CORNER, SE1/4, NE1/4	19	87N	6W



I HEREBY CERTIFY THAT THIS LAND SURVEYING DOCUMENT WAS PREPARED AND THE RELATED SURVEY WORK WAS PERFORMED BY ME OR UNDER MY DIRECT PERSONAL SUPERVISION AND THAT I AM A DULY LICENSED LAND SURVEYOR UNDER THE LAWS OF THE STATE OF IOWA.

*Wyatt B. Anderson* 7-18-2023  
DATE

WYATT B. ANDERSON  
LICENSE NUMBER 22136  
MY LICENSE RENEWAL DATE IS DECEMBER 31, 2023  
SHEETS COVERED BY THIS SEAL: THIS SHEET ONLY