



Book 2023 Page 1628

Document 2023 1628 Type 06 007 Pages 1
Date 7/14/2023 Time 9:12:48AM
Rec Amt \$.00

PREPARED BY: WYATT B. ANDERSON,
DELAWARE COUNTY ENGINEER'S OFFICE, 2139
HIGHWAY 38, MANCHESTER, IOWA 52057,
PH: 563-927-3505

Daneen Schindler, RECORDER/REGISTRAR
DELAWARE COUNTY IOWA

UNITED STATES PUBLIC LAND SURVEY CORNER CERTIFICATE OF

LAND SURVEY MONUMENTS SITUATED IN SECTION 30, TOWNSHIP 87 NORTH, RANGE 6 WEST OF THE FIFTH
PRINCIPAL MERIDIAN, DELAWARE COUNTY, IOWA.
PREVIOUSLY RECORDED IN BOOK 2006, PAGE 3779 IN COUNTY RECORDER'S OFFICE.
(book, page, document number, etc.)

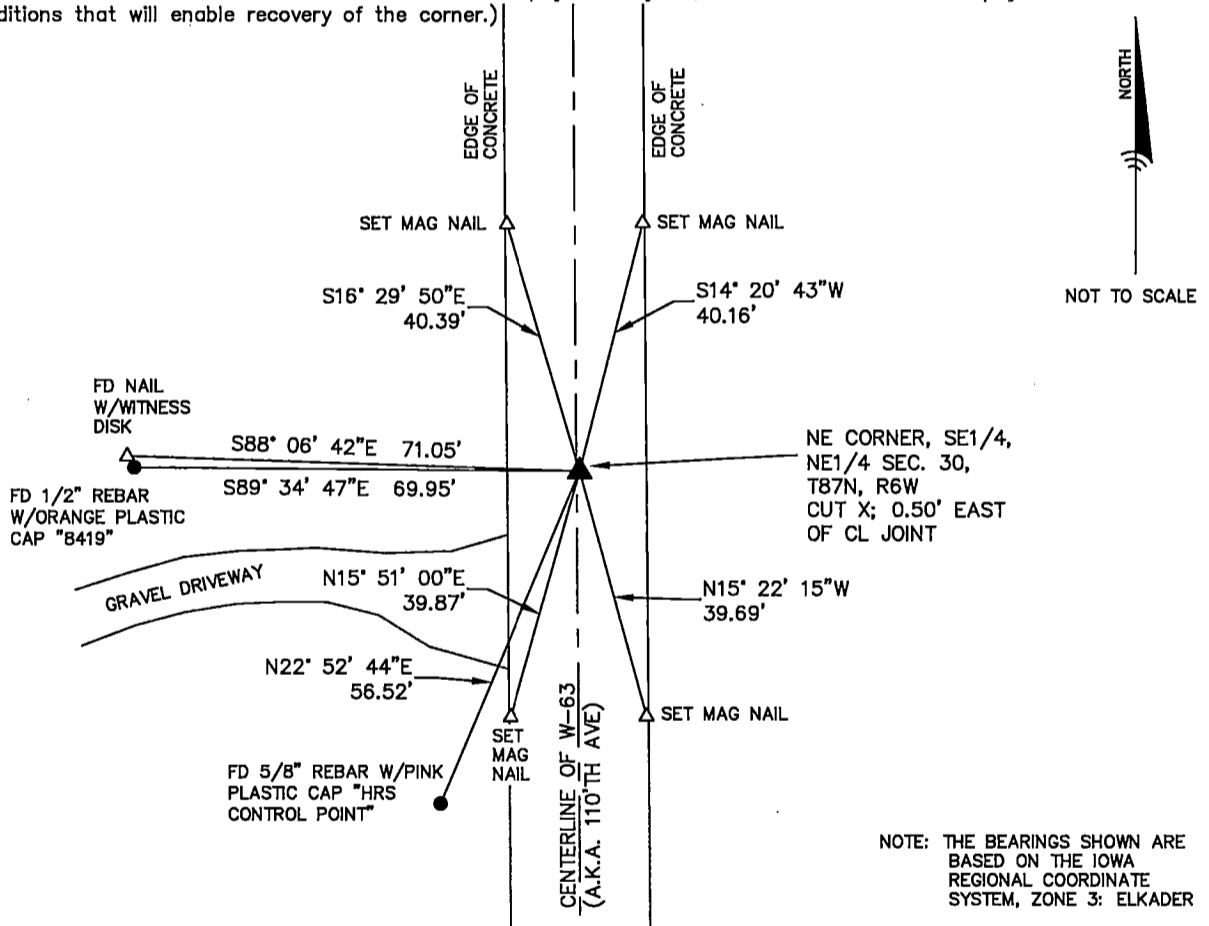
(Show reason for preparing this certificate, the evidence and detailed procedures used in establishing the
corner positions and monumentation found or placed.)

Monument Description and Remarks:

- I FOUND A MAG NAIL WITH BRASS WASHER STAMPED "8419" IN THE OLD CONCRETE PAVEMENT AT THE
NORTHEAST 1/4 CORNER OF SOUTHEAST 1/4 OF THE NORTHEAST 1/4 SECTION 30. W-63 WAS
OVERLAYED WITH CONCRETE AND I CUT A NEW X AT THE SAID CORNER.

PLAN - VIEW

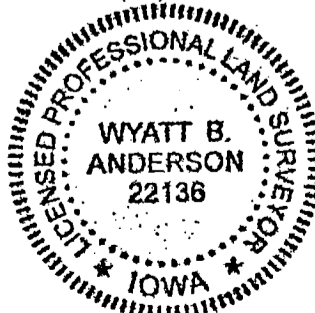
(Show a minimum of three reference ties to durable physical objects, relevant monuments and physical
conditions that will enable recovery of the corner.)



NOTE: THE BEARINGS SHOWN ARE
BASED ON THE IOWA
REGIONAL COORDINATE
SYSTEM, ZONE 3: ELKADER

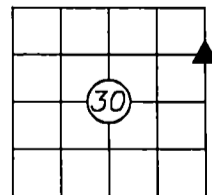
DELAWARE COUNTY ENGINEER'S OFFICE

2139 HIGHWAY 38
MANCHESTER, IOWA 52057
PHONE: (563) 927-3505



List Corners to be Indexed

Corners	Section	Twp	Range
NE CORNER, SE1/4, NE1/4	30	87N	6W



I HEREBY CERTIFY THAT THIS LAND SURVEYING DOCUMENT WAS PREPARED AND THE
RELATED SURVEY WORK WAS PERFORMED BY ME OR UNDER MY DIRECT PERSONAL
SUPERVISION AND THAT I AM A DULY LICENSED LAND SURVEYOR UNDER THE LAWS
OF THE STATE OF IOWA.

Wyatt B. Anderson 7-11-2023
DATE

WYATT B. ANDERSON
LICENSE NUMBER 22136
MY LICENSE RENEWAL DATE IS DECEMBER 31, 2023
SHEETS COVERED BY THIS SEAL: THIS SHEET ONLY