



Book 2023 Page 1625

Document 2023 1625 Type 06 007 Pages 1
Date 7/14/2023 Time 9:12:27AM
Rec Amt \$.00

Daneen Schindler, RECORDER/REGISTRAR
DELAWARE COUNTY IOWA

PREPARED BY: WYATT B. ANDERSON,
DELAWARE COUNTY ENGINEER'S OFFICE, 2139
HIGHWAY 38, MANCHESTER, IOWA 52057,
PH: 563-927-3505

UNITED STATES PUBLIC LAND SURVEY CORNER CERTIFICATE OF

LAND SURVEY MONUMENTS SITUATED IN SECTION 31, TOWNSHIP 87 NORTH, RANGE 6 WEST OF THE FIFTH
PRINCIPAL MERIDIAN, DELAWARE COUNTY, IOWA.
PREVIOUSLY RECORDED IN BOOK 1, PAGE 276 IN COUNTY RECORDER'S OFFICE.
(book, page, document number, etc.)

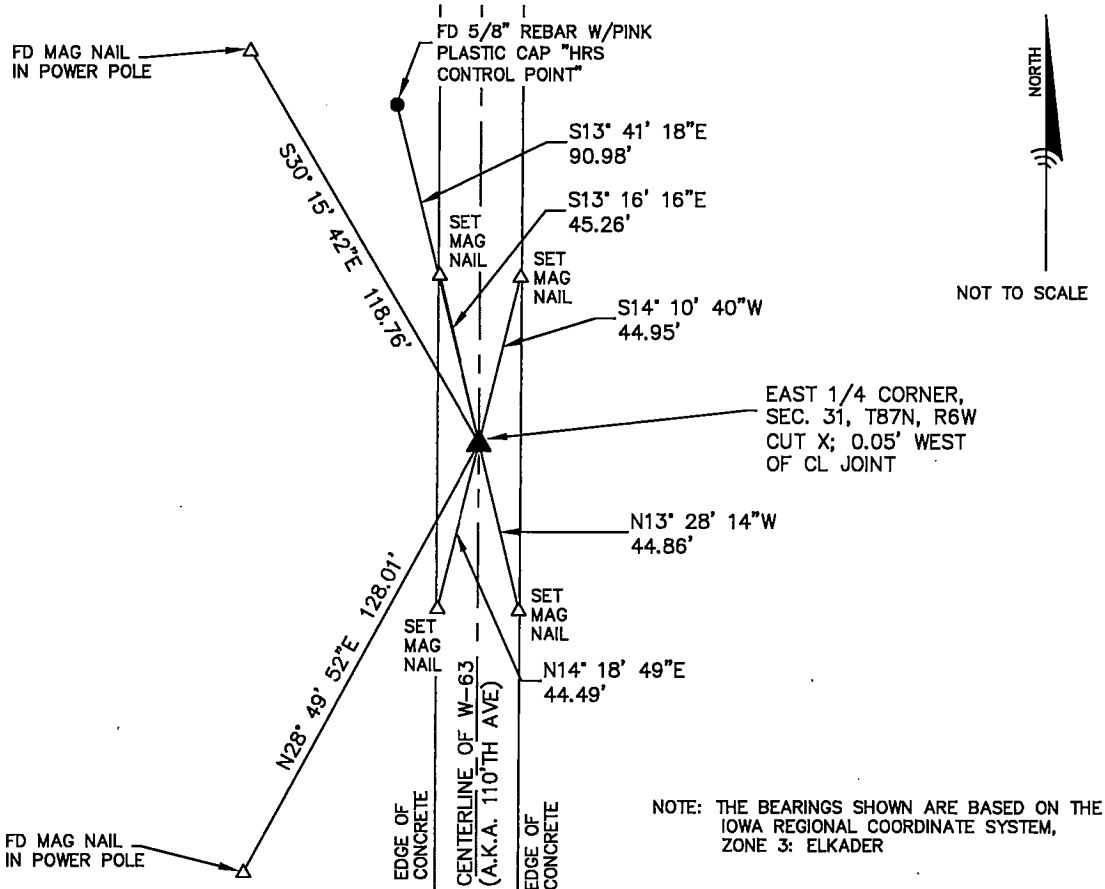
(Show reason for preparing this certificate, the evidence and detailed procedures used in establishing the
corner positions and monumentation found or placed.)

Monument Description and Remarks:

- I FOUND A CUT X IN THE OLD CONCRETE PAVEMENT AT THE EAST 1/4 CORNER OF SECTION 31, W-63 WAS OVERLAYED WITH CONCRETE AND I CUT A NEW X AT THE EAST 1/4 CORNER OF SECTION 31. THE LOCATION IS IN AGREEMENT WITH A CUT X REFERENCE TIE FOUND BEFORE THE CONCRETE WAS OVERLAYED. THE CORNER LOCATION IS ALSO IN AGREEMENT WITH A PLAT OF SURVEY IN BOOK 2013-2513.

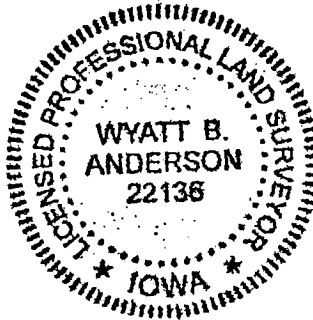
PLAN - VIEW

(Show a minimum of three reference ties to durable physical objects, relevant monuments and physical conditions that will enable recovery of the corner.)



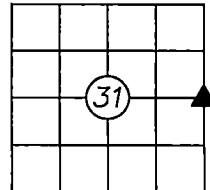
DELAWARE COUNTY ENGINEER'S OFFICE

2139 HIGHWAY 38
MANCHESTER, IOWA 52057
PHONE: (563) 927-3505



List Corners to be Indexed

Corners	Section	Twp	Range
EAST 1/4 CORNER	31	87N	6W



I HEREBY CERTIFY THAT THIS LAND SURVEYING DOCUMENT WAS PREPARED AND THE RELATED SURVEY WORK WAS PERFORMED BY ME OR UNDER MY DIRECT PERSONAL SUPERVISION AND THAT I AM A DULY LICENSED LAND SURVEYOR UNDER THE LAWS OF THE STATE OF IOWA.

Wyatt B. Anderson 7-11-2023

WYATT B. ANDERSON
LICENSE NUMBER 22136
MY LICENSE RENEWAL DATE IS DECEMBER 31, 2023
SHEETS COVERED BY THIS SEAL: THIS SHEET ONLY

DATE