



Book 2023 Page 1624

Document 2023 1624 Type 06 007 Pages 1
Date 7/14/2023 Time 9:11:42AM
Rec Amt \$.00

PREPARED BY: WYATT B. ANDERSON,
DELAWARE COUNTY ENGINEER'S OFFICE, 2139
HIGHWAY 38, MANCHESTER, IOWA 52057,
PH: 563-927-3505

Daneen Schindler, RECORDER/REGISTRAR
DELAWARE COUNTY IOWA

UNITED STATES PUBLIC LAND SURVEY CORNER CERTIFICATE OF

LAND SURVEY MONUMENTS SITUATED IN SECTION 14, TOWNSHIP 90 NORTH, RANGE 4 WEST OF THE FIFTH
PRINCIPAL MERIDIAN, DELAWARE COUNTY, IOWA.
PREVIOUSLY RECORDED IN BOOK 2005, PAGE 4281 IN COUNTY RECORDER'S OFFICE.
(book, page, document number, etc.)

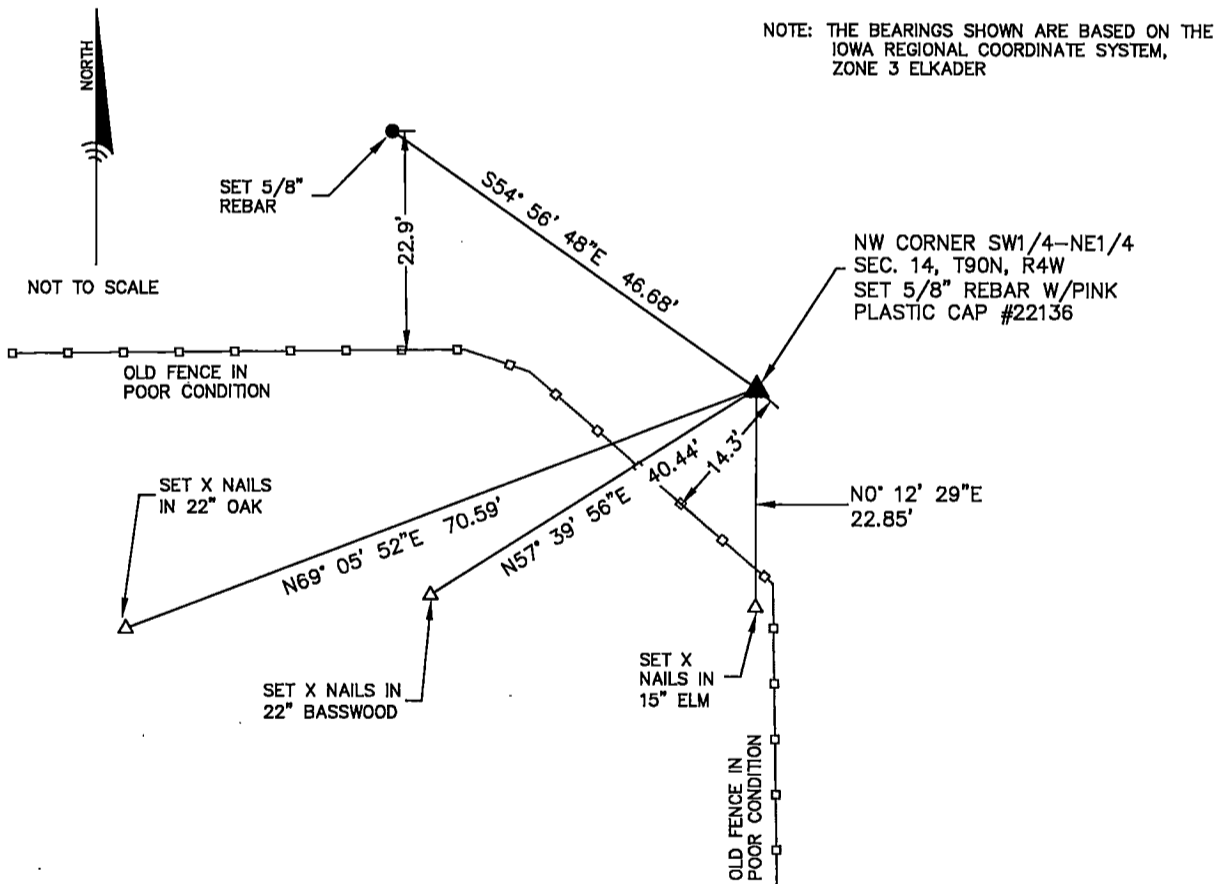
(Show reason for preparing this certificate, the evidence and detailed procedures used in establishing the
corner positions and monumentation found or placed.)

Monument Description and Remarks:

- A STONE WAS FOUND BROKEN TO PIECES AT THE CORNER. I SET A 5/8" REBAR W/PINK PLASTIC CAP #22136 AT THE NORTHWEST CORNER OF THE SOUTHWEST 1/4 OF THE NORTHEAST 1/4 OF SECTION 14 TO REPLACE THE BROKEN STONE MONUMENT. I DETERMINED THE CORNER LOCATION BASED OFF DIMENSIONS TO EXISTING MONUMENTS SHOWN ON A PLAT OF SURVEY IN BOOK 2005, PAGE 4280.

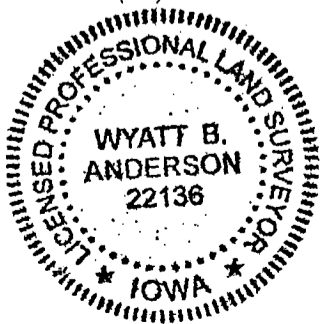
PLAN - VIEW

(Show a minimum of three reference ties to durable physical objects, relevant monuments and physical conditions that will enable recovery of the corner.)



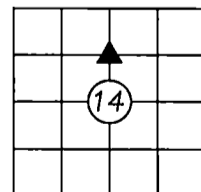
DELAWARE COUNTY ENGINEER'S OFFICE

2139 HIGHWAY 38
MANCHESTER, IOWA 52057
PHONE: (563) 927-3505



List Corners to be Indexed

Corners	Section	Twp	Range
NW COR., SW1/4, NE1/4	14	90N	4W



I HEREBY CERTIFY THAT THIS LAND SURVEYING DOCUMENT WAS PREPARED AND THE RELATED SURVEY WORK WAS PERFORMED BY ME OR UNDER MY DIRECT PERSONAL SUPERVISION AND THAT I AM A DULY LICENSED LAND SURVEYOR UNDER THE LAWS OF THE STATE OF IOWA.

Wyatt B. Anderson 7-11-2023

WYATT B. ANDERSON
LICENSE NUMBER 22136
MY LICENSE RENEWAL DATE IS DECEMBER 31, 2023
SHEETS COVERED BY THIS SEAL: THIS SHEET ONLY