



Book 2023 Page 1588

Document 2023 1588 Type 06 007 Pages 1
Date 7/11/2023 Time 2:57:11PM
Rec Amt \$7.00

Daneen Schindler, RECORDER/REGISTRAR
DELAWARE COUNTY IOWA

PREPARED BY: RANDALL L. RATTENBORG 105 WEST MAIN STREET MANCHESTER, IA 52057, 563-927-2434

UNITED STATES PUBLIC LAND SURVEY CORNER CERTIFICATE

Land Survey Monuments situated in Section 6, Township 88 North, Range 5 West of the Fifth Principal Meridian,
Delaware County, Iowa.

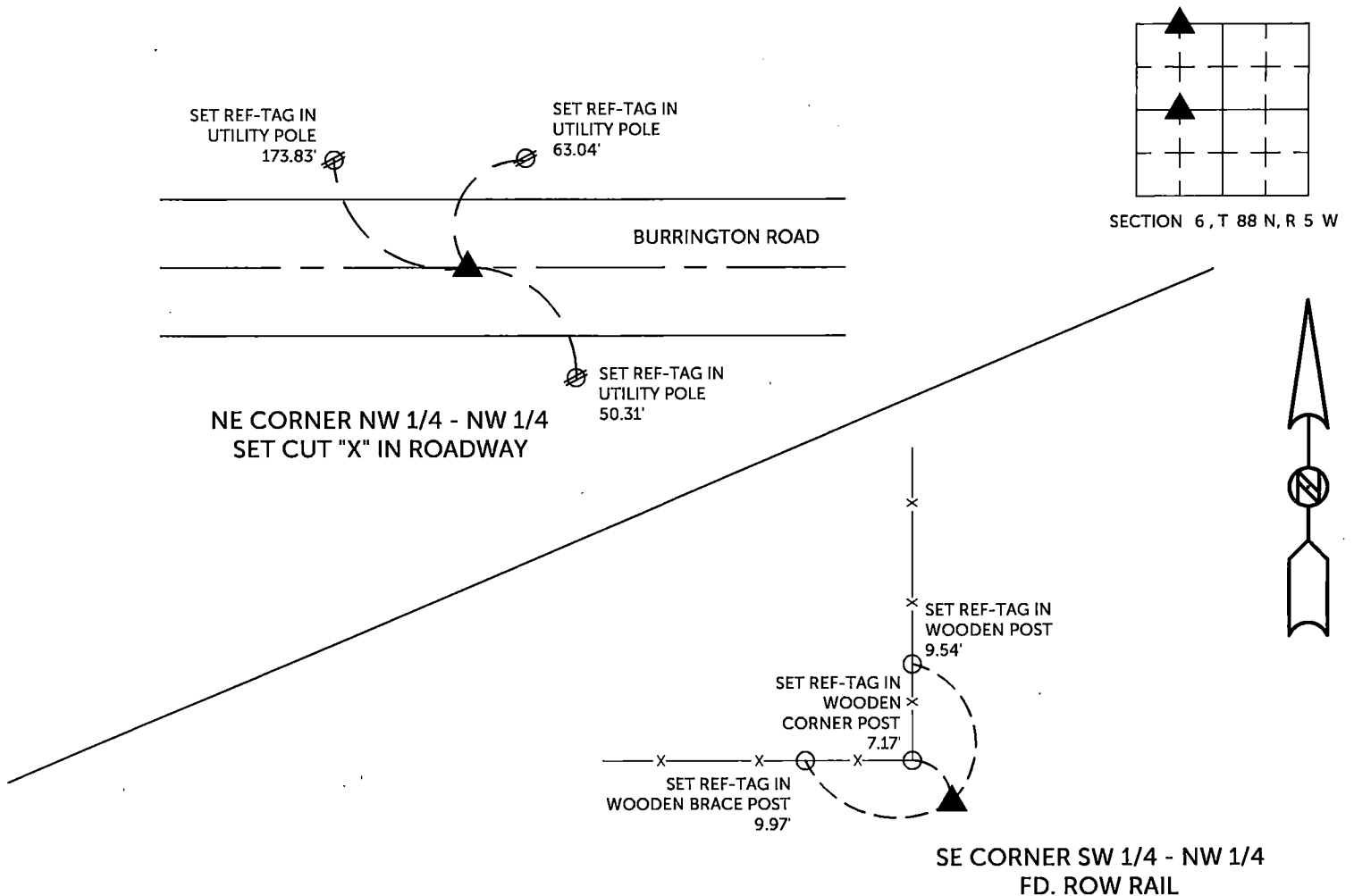
Previously recorded in County Recorder's Office in _____ See Descriptions Below
(book, page, document number, etc.)

NE Corner NW 1/4 - NW 1/4: Set cut "X" at intersection of the south line of Sec. 31, T88N, R5W and a line from the SE Corner SW 1/4 - SW 1/4 through the NW Corner of Lot 4 of Fink's subdivision.

SE Corner SW 1/4 - NW 1/4: Found ROW rail.

PLAN VIEW

(Show a minimum of three reference ties to durable physical objects, relevant monuments and physical conditions that will enable recovery of the corner.)

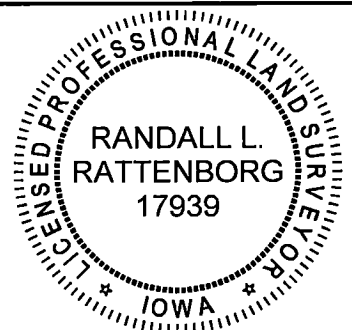


TIES ARE TO PLAT
IN SECTION 6, T 88 N, R 5 W

BURRINGTON GROUP, INC. PROJECT NO. 23-027

I HEREBY CERTIFY THAT THIS LAND SURVEYING DOCUMENT WAS PREPARED AND THE RELATED SURVEY WORK WAS PERFORMED BY ME OR UNDER MY DIRECT PERSONAL SUPERVISION AND THAT I AM A DULY LICENSED PROFESSIONAL LAND SURVEYOR UNDER THE LAWS OF THE STATE OF IOWA.

SEAL COVERS THIS SHEET ONLY



[Signature] 7/11/2023
 Randall L. Rattenborg, P.L.S. License #17939 Date
 My license renewal date is December 31, 2023

List Corners to be Indexed:	Section	Township	Range
NE Corner NW 1/4 - NW 1/4	6	T 88 N	R 5 W
SE Corner SW 1/4 - NW 1/4			

BURRINGTON GROUP, INC.
 Civil Engineering | Land Surveying
 105 W. Main Street Manchester, Iowa 52057