



Book 2023 Page 938

Document 2023 938 Type 06 007 Pages 1  
Date 5/01/2023 Time 2:48:00PM  
Rec Amt \$7.00

Daneen Schindler, RECORDER/REGISTRAR  
DELAWARE COUNTY IOWA

PREPARED BY: RANDALL L. RATTENBORG 105 WEST MAIN STREET MANCHESTER, IA 52057, 563-927-2434

# UNITED STATES PUBLIC LAND SURVEY CORNER CERTIFICATE

Land Survey Monuments situated in Section 14 , Township 87 North, Range 4 West of the Fifth Principal Meridian,  
Delaware County, Iowa.

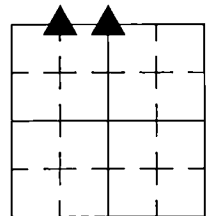
Previously recorded in County Recorder's Office in \_\_\_\_\_ Not Recorded  
(book, page, document number, etc.)

N 1/4 CORNER, Set 1/2" rebar w/orange cap #17939 1 rod (16.5 feet) East of the corner post. This location makes the mathematical location of the NE Corner NW 1/4-NW 1/4 fit the field evidence. An extension of the quarter line from the SE Corner NE 1/4-SW 1/4 through the Center of Section extended North to the area of the N 1/4 Corner does not allow the theoretical locations of the breakdown of the NW 1/4 to fit the field evidence.

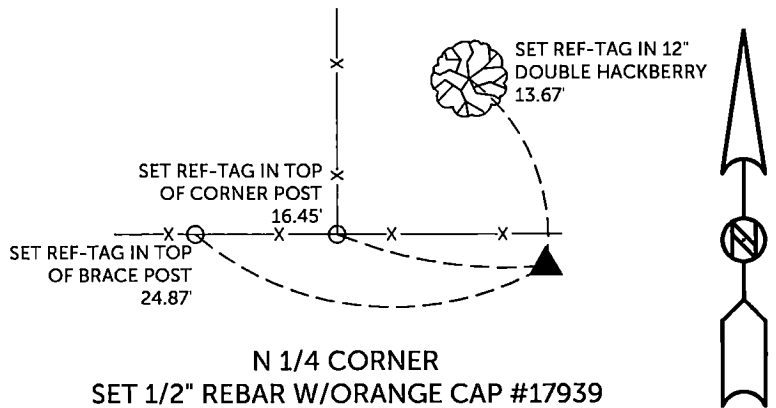
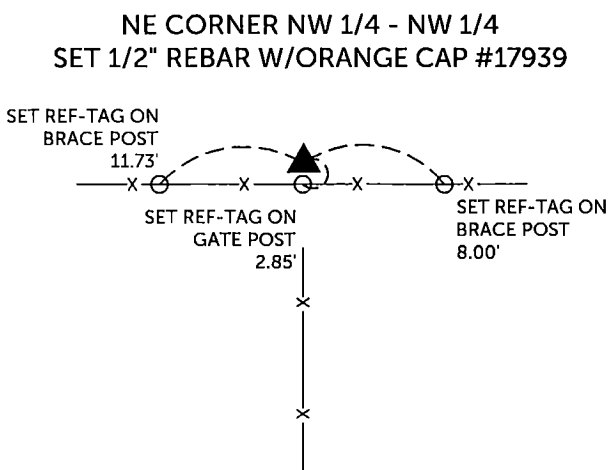
NE CORNER NW 1/4 - NW 1/4, Set 1/2" rebar w/orange cap #17939 proportional between N 1/4 Corner and NW Corner.

## PLAN VIEW

(Show a minimum of three reference ties to durable physical objects, relevant monuments and physical conditions that will enable recovery of the corner.)



SECTION 14, T 87 N, R 4 W



TIES ARE TO PLAT PARCEL 2023-01 & PARCEL 2023-02  
IN SECTION 14, T 87 N, R 4 W

BURRINGTON GROUP, INC. PROJECT NO. 22-163

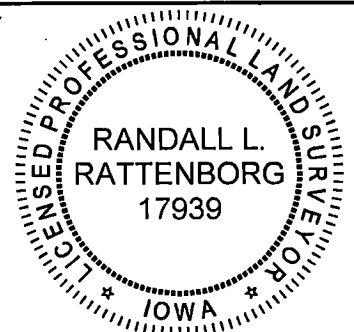
I HEREBY CERTIFY THAT THIS LAND SURVEYING DOCUMENT WAS PREPARED AND THE RELATED SURVEY WORK WAS PERFORMED BY ME OR UNDER MY DIRECT PERSONAL SUPERVISION AND THAT I AM A DULY LICENSED PROFESSIONAL LAND SURVEYOR UNDER THE LAWS OF THE STATE OF IOWA.

SEAL COVERS THIS SHEET ONLY

5/1/23

Randall L. Rattenborg, P.L.S. License #17939 Date  
My license renewal date is December 31, 2023

List Corners to be Indexed:	Section	Township	Range
N 1/4 CORNER	14	T 87 N	R 4 W
NE CORNER NW 1/4 - NW 1/4			



**BURRINGTON GROUP, INC.**  
Civil Engineering | Land Surveying  
105 W. Main Street Manchester, Iowa 52057