



Book 2022 Page 3634

Document 2022 3634 Type 06 007 Pages 1
Date 12/13/2022 Time 10:57:50AM
Rec Amt \$7.00

Daneen Schindler, RECORDER/REGISTRAR
DELAWARE COUNTY IOWA

[Signature]

PREPARED BY: RANDALL L. RATTENBORG 105 WEST MAIN STREET MANCHESTER, IA 52057, 563-927-2434

UNITED STATES PUBLIC LAND SURVEY CORNER CERTIFICATE

Land Survey Monuments situated in Section 01 , Township 88 North, Range 6 West of the Fifth Principal Meridian,
Delaware County, Iowa.

Previously recorded in County Recorder's Office in Not Recorded
(book, page, document number, etc.)

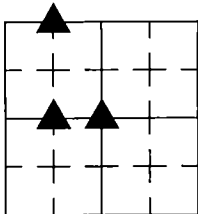
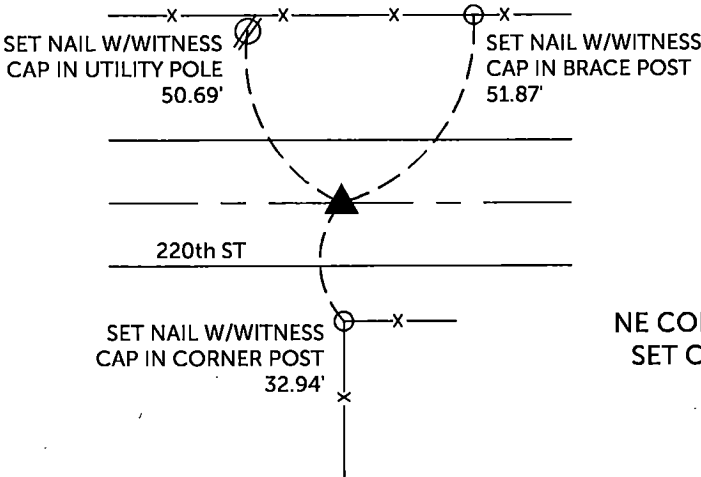
CENTER OF SECTION, Set 1/2" rebar w/orange cap #17939 at intersection of quarter lines.

SE CORNER SW 1/4 - NW 1/4, Set 1/2" rebar w/orange cap #17939 at mathematical location between the Center of Section and the W 1/4 Corner.

NE CORNER NW 1/4 - NW 1/4, Set cut "X" at mathematical location between the N 1/4 Corner and NW Corner on the section line of the SE 1/4 of Sec. 36, T89N, R6W.

PLAN VIEW

(Show a minimum of three reference ties to durable physical objects, relevant monuments and physical conditions that will enable recovery of the corner.)



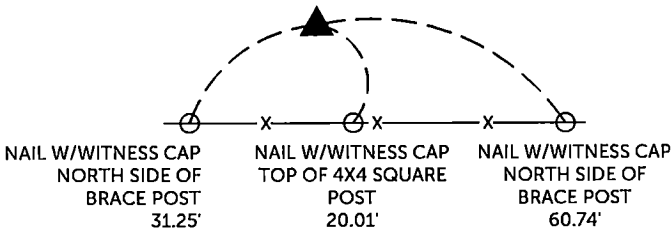
SECTION 01, T 88 N, R 6 W

NE CORNER NW 1/4 - NW 1/4
SET CUT "X" IN PAVEMENT



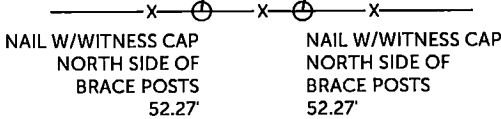
EASTBOUND US HWY #20

EASTBOUND US HWY #20



SE CORNER SW 1/4 - NW 1/4
SET 1/2" REBAR W/ORANGE CAP #17939

NAIL W/WITNESS CAP
SOUTH SIDE OF 24"
QUAD MAPLE TREE
12.92'



CENTER OF SECTION
SET 1/2" REBAR W/ORANGE CAP #17939

TIES ARE TO PLAT GUDENKAUF SUBDIVISION NO. 2
IN SECTION 01, T 88 N, R 6 W

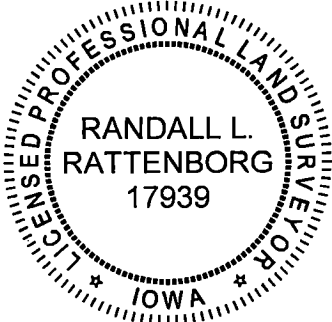
BURRINGTON GROUP, INC. PROJECT NO. 22-125

I HEREBY CERTIFY THAT THIS LAND SURVEYING DOCUMENT
WAS PREPARED AND THE RELATED SURVEY WORK WAS
PERFORMED BY ME OR UNDER MY DIRECT PERSONAL
SUPERVISION AND THAT I AM A DULY LICENSED PROFESSIONAL
LAND SURVEYOR UNDER THE LAWS OF THE STATE OF IOWA.

[Signature]
Randall L. Rattenborg, P.L.S. License #17939 Date 10/15/2022
My license renewal date is December 31, 2023

List Corners to be Indexed: Section Township Range
CENTER OF SECTION 01 T 88N R 6 W
SE CORNER SW 1/4 - NW 1/4
NE CORNER NW 1/4 - NW 1/4

SEAL COVERS THIS SHEET ONLY



BURRINGTON GROUP, INC.
Civil Engineering | Land Surveying
105 W. Main Street Manchester, Iowa 52057