



Book 2022 Page 3630

Document 2022 3630 Type 06 007 Pages 1  
Date 12/13/2022 Time 10:56:53AM  
Rec Amt \$7.00

Daneen Schindler, RECORDER/REGISTRAR  
DELAWARE COUNTY IOWA

PREPARED BY: RANDALL L. RATTENBORG 105 WEST MAIN STREET MANCHESTER, IA 52057, 563-927-2434

UNITED STATES PUBLIC LAND SURVEY CORNER CERTIFICATE

Land Survey Monuments situated in Section 2 , Township 88 North, Range 6 West of the Fifth Principal Meridian,  
DELAWARE County, Iowa.

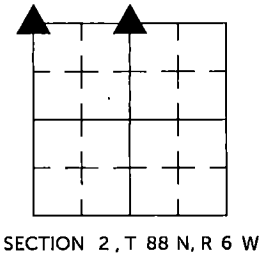
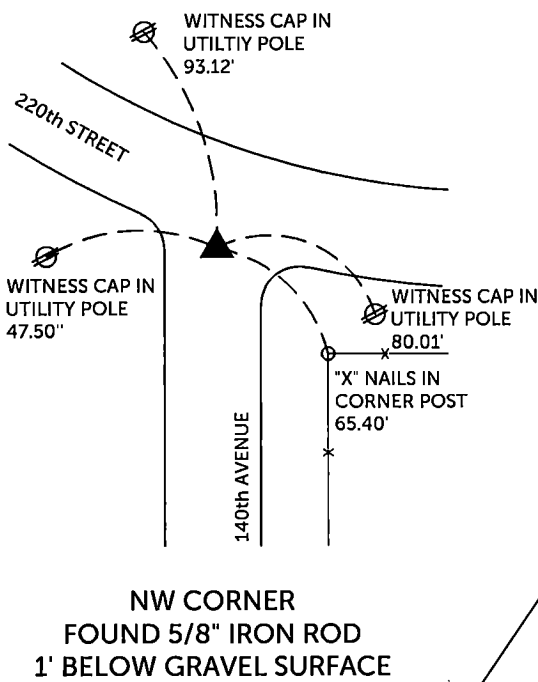
Previously recorded in County Recorder's Office in SEE DESCRIPTIONS  
(book, page, document number, etc.)

NW CORNER, Found 5/8" iron rod as per corner tie found in the County Engineer's office.

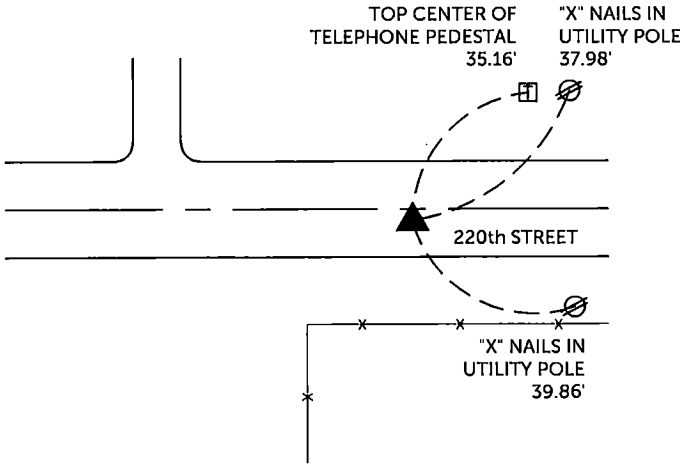
N 1/4 Corner: Found cut "X" 2' south of center line.

PLAN VIEW

(Show a minimum of three reference ties to durable physical objects, relevant monuments and physical conditions that will enable recovery of the corner.)



N 1/4 CORNER  
FOUND CUT "X" IN PCC PAVEMENT

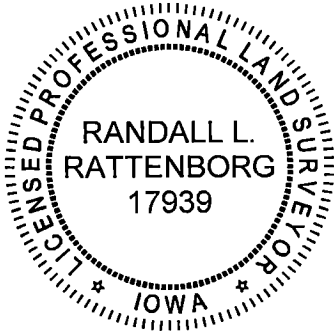


TIES ARE TO PLAT GUDENKAUF SUBDIVISION NO. 1  
IN SECTION 2, T 88 N, R 6 W

BURRINGTON GROUP, INC. PROJECT NO.

I HEREBY CERTIFY THAT THIS LAND SURVEYING DOCUMENT  
WAS PREPARED AND THE RELATED SURVEY WORK WAS  
PERFORMED BY ME OR UNDER MY DIRECT PERSONAL  
SUPERVISION AND THAT I AM A DULY LICENSED PROFESSIONAL  
LAND SURVEYOR UNDER THE LAWS OF THE STATE OF IOWA.

SEAL COVERS THIS SHEET ONLY



Randall L. Rattenborg, P.L.S. License #17939 Date  
My license renewal date is December 31, 2023

List Corners to be Indexed: Section Township Range

NW CORNER 2 T 88N R 6 W  
N 1/4 CORNER



BURRINGTON GROUP, INC.  
Civil Engineering | Land Surveying  
105 W. Main Street Manchester, Iowa 52057