



Book 2022 Page 3629

Document 2022 3629 Type 06 007 Pages 1  
Date 12/13/2022 Time 10:56:40AM  
Rec Amt \$7.00

Daneen Schindler, RECORDER/REGISTRAR  
DELAWARE COUNTY IOWA

PREPARED BY: RANDALL L. RATTENBORG 105 WEST MAIN STREET MANCHESTER, IA 52057, 563-927-2434

UNITED STATES PUBLIC LAND SURVEY CORNER CERTIFICATE

Land Survey Monuments situated in Section 35 , Township 89 North, Range 6 West of the Fifth Principal Meridian,  
Delaware County, Iowa.

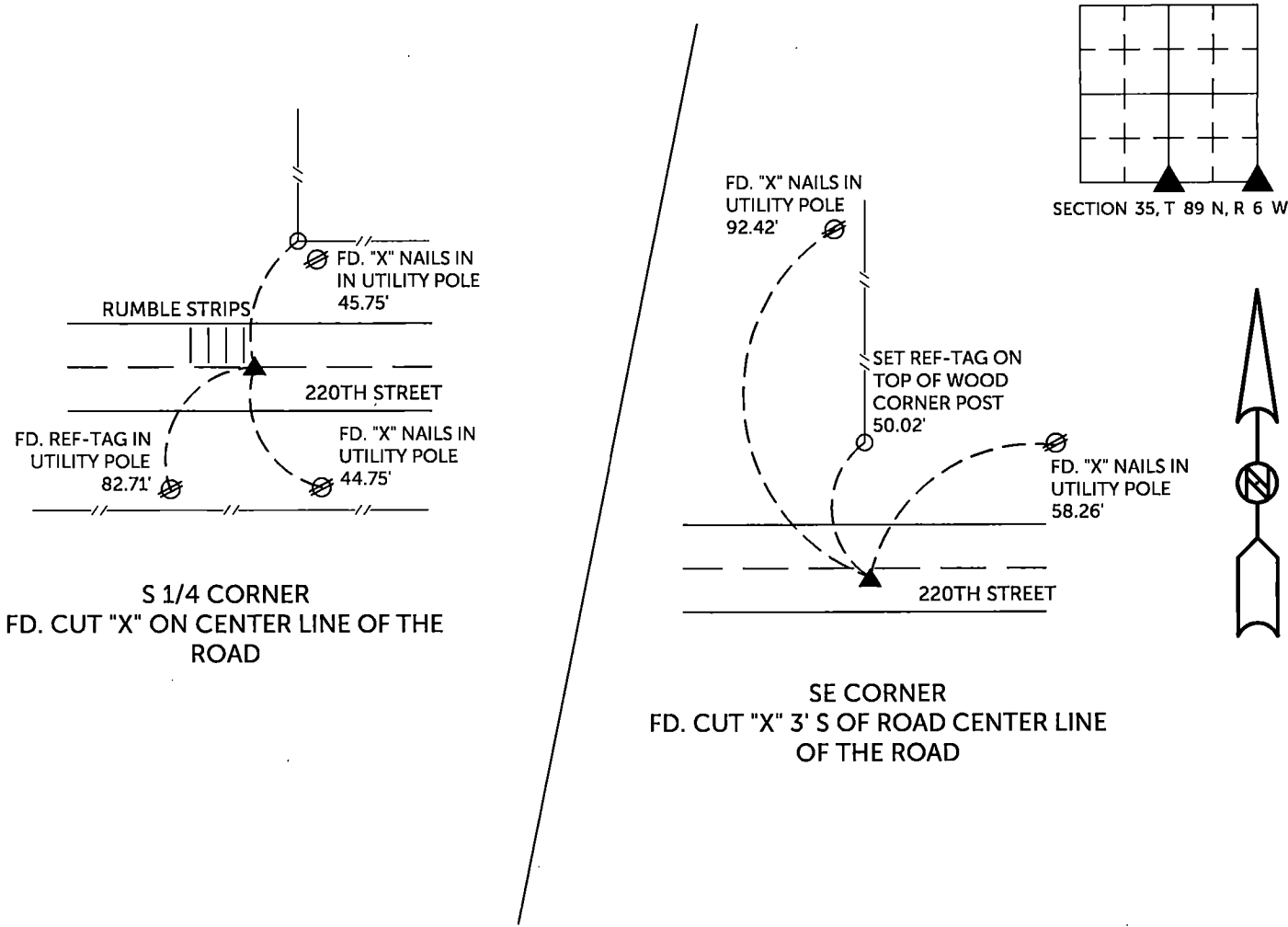
Previously recorded in County Recorder's Office in See Description Below  
(book, page, document number, etc.)

S 1/4 Corner: Found cut "X" on center line of the road as recorded in Book 2006, Page 304. Corner Tie being reissued due to missing tie object.

SE Corner: Found cut "X" 3' South of road center line of the road as recorded in Book 2006, Page 304. Corner Tie being reissued due to missing tie object.

PLAN VIEW

(Show a minimum of three reference ties to durable physical objects, relevant monuments and physical conditions that will enable recovery of the corner.)

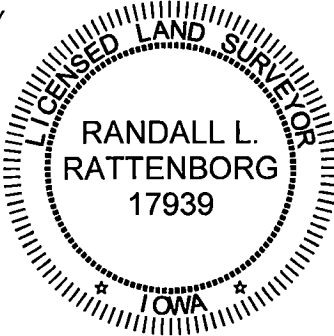


TIES ARE TO PLAT GUDENKAUF SUBDIVISION NO. 1  
IN SECTION 35, T 89 N, R 6 W

BURRINGTON GROUP, INC. PROJECT NO. 22-125

I HEREBY CERTIFY THAT THIS LAND SURVEYING DOCUMENT  
WAS PREPARED AND THE RELATED SURVEY WORK WAS  
PERFORMED BY ME OR UNDER MY DIRECT PERSONAL  
SUPERVISION AND THAT I AM A DULY LICENSED PROFESSIONAL  
LAND SURVEYOR UNDER THE LAWS OF THE STATE OF IOWA.

SEAL COVERS THIS SHEET ONLY



*[Signature]* 12/10/2022  
Randall L. Rattenborg, P.L.S. License #17939 Date  
My license renewal date is December 31, 2023  
List Corners to be Indexed: Section Township Range  
S 1/4 CORNER 35 T 89N R 6 W  
SE CORNER

**BURRINGTON GROUP, INC.**  
Civil Engineering | Land Surveying  
105 W. Main Street Manchester, Iowa 52057