



Book 2022 Page 3624

Document 2022 3624 Type 06 007 Pages 1
Date 12/12/2022 Time 3:58:26PM
Rec Amt \$7.00

Daneen Schindler, RECORDER/REGISTRAR
DELAWARE COUNTY IOWA

PREPARED BY: RANDALL L. RATTENBORG 105 WEST MAIN STREET MANCHESTER, IA 52057, 563-927-2434

UNITED STATES PUBLIC LAND SURVEY CORNER CERTIFICATE

Land Survey Monuments situated in Section 35 , Township 90 North, Range 6 West of the Fifth Principal Meridian,
Delaware County, Iowa.

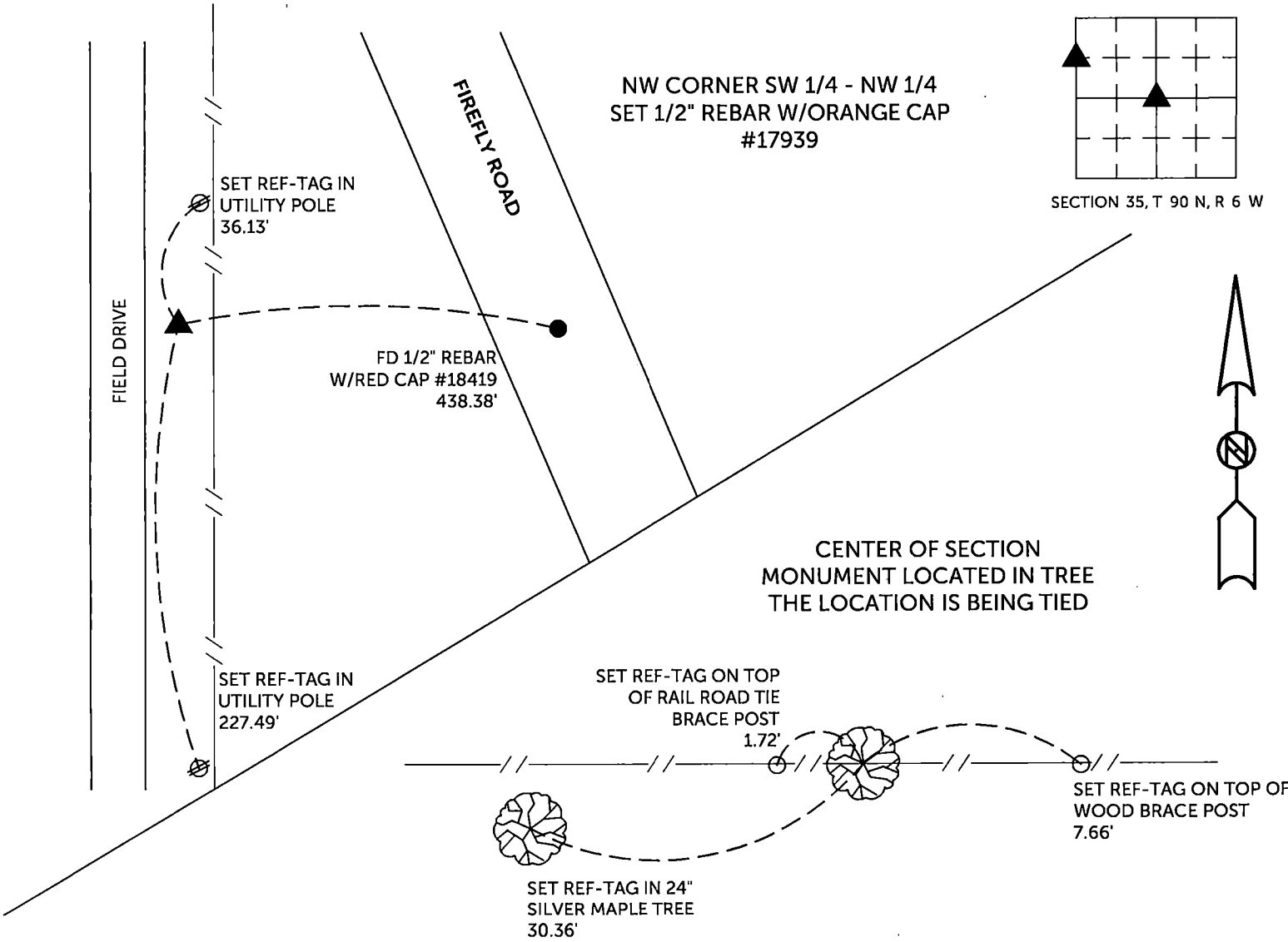
Previously recorded in County Recorder's Office in SEE DESCRIPTIONS BELOW
(book, page, document number, etc.)

NW CORNER SW 1/4 - NW 1/4: Set 1/2" rebar with orange plastic cap #17939 proportionate between the NW Corner and the W 1/4 Corner.

CENTER OF SECTION: Recorded in Corner Tie Book 1, Page 238. The monument is in a tree, the location is being tied by this certificate.

PLAN VIEW

(Show a minimum of three reference ties to durable physical objects, relevant monuments and physical conditions that will enable recovery of the corner.)

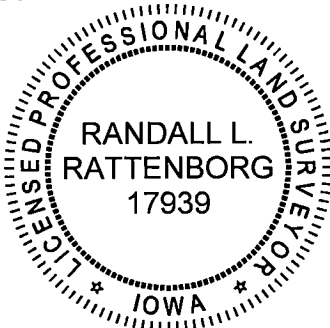


TIES ARE TO PLAT PARCEL 2022-152 & PARCELI 2022-153
IN SECTION 35, T 90 N, R 6 W

BURRINGTON GROUP, INC. PROJECT NO. 22-157

I HEREBY CERTIFY THAT THIS LAND SURVEYING DOCUMENT
WAS PREPARED AND THE RELATED SURVEY WORK WAS
PERFORMED BY ME OR UNDER MY DIRECT PERSONAL
SUPERVISION AND THAT I AM A DULY LICENSED PROFESSIONAL
LAND SURVEYOR UNDER THE LAWS OF THE STATE OF IOWA.

SEAL COVERS THIS SHEET ONLY



Randall L. Rattenborg, P.L.S. License #17939 Date 12/12/2022
My license renewal date is December 31, 2023
List Corners to be Indexed: Section Township Range
NW CORNER SW 1/4 - NW 1/4 35 T 90N R 6 W
CENTER OF SECTION



BURRINGTON GROUP, INC.
Civil Engineering | Land Surveying
105 W. Main Street Manchester, Iowa 52057