



Book 2022 Page 3621

Document 2022 3621 Type 06 007 Pages 1  
Date 12/12/2022 Time 3:55:22PM  
Rec Amt \$7.00

Daneen Schindler, RECORDER/REGISTRAR  
DELAWARE COUNTY IOWA

PREPARED BY: RANDALL L. RATTENBORG 105 WEST MAIN STREET MANCHESTER, IA 52057, 563-927-2434

UNITED STATES PUBLIC LAND SURVEY CORNER CERTIFICATE

Land Survey Monuments situated in Section 24 , Township 87 North, Range 5 West of the Fifth Principal Meridian,  
Delaware County, Iowa.

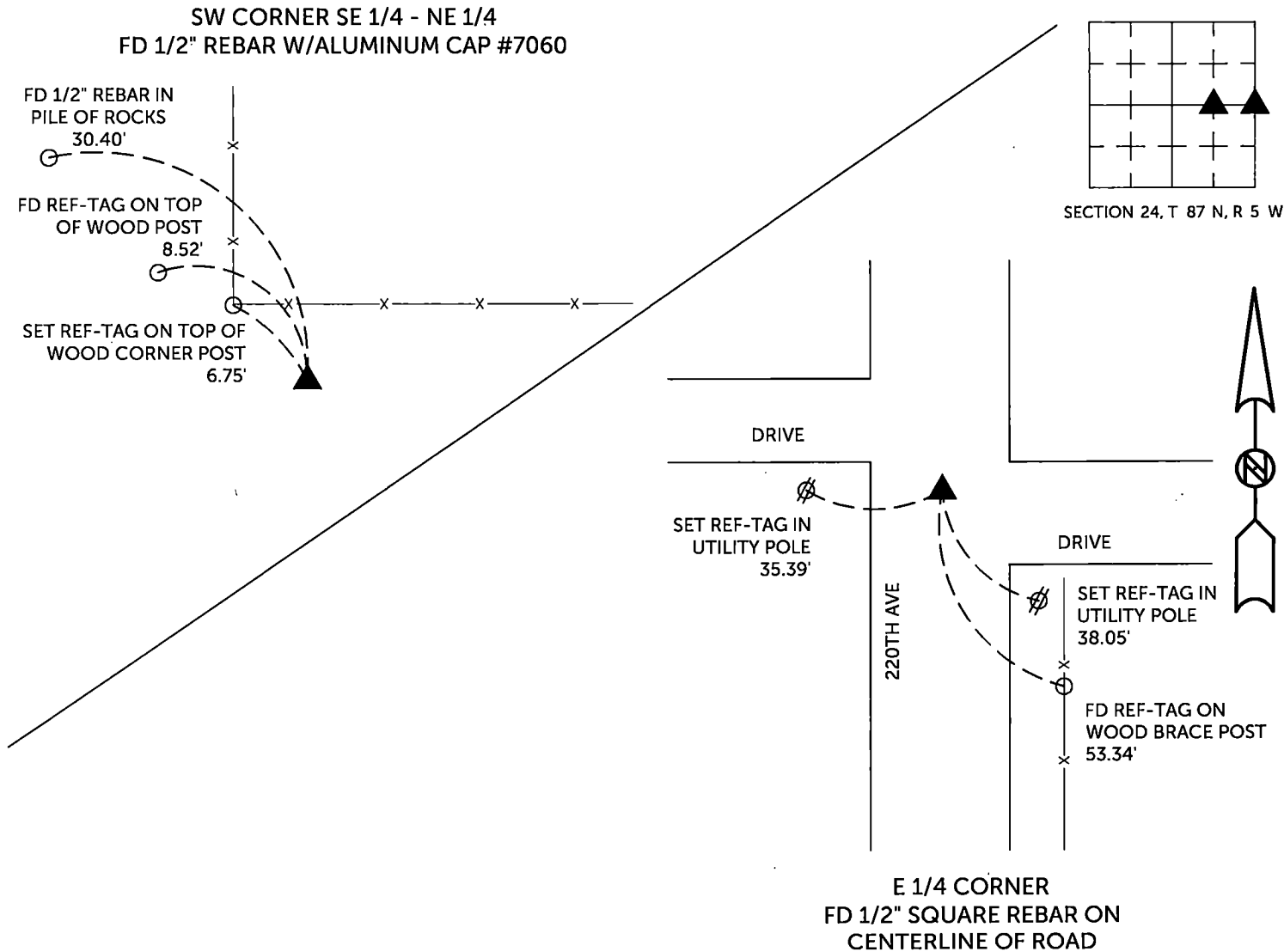
Previously recorded in County Recorder's Office in SEE DESCRIPTIONS BELOW  
(book, page, document number, etc.)

SW Corner SE 1/4 - NE 1/4: Found 1/2" rebar w/aluminum cap #7060 as recorded in Book 2011, Page 3863.  
Corner Certificate being reissued due to missing tie objects.

E 1/4 Corner: Found 1/2" square rebar on centerline of road as recorded in Book 2009, Page 726.  
Corner Certificate being reissued due to missing tie objects.

PLAN VIEW

(Show a minimum of three reference ties to durable physical objects, relevant monuments and physical conditions that will enable recovery of the corner.)



TIES ARE TO PLAT PARCEL 2022-148 & PARCEL 2022-149  
IN SECTION 24, T 87 N, R 5 W

BURRINGTON GROUP, INC. PROJECT NO. 22-062

I HEREBY CERTIFY THAT THIS LAND SURVEYING DOCUMENT  
WAS PREPARED AND THE RELATED SURVEY WORK WAS  
PERFORMED BY ME OR UNDER MY DIRECT PERSONAL  
SUPERVISION AND THAT I AM A DULY LICENSED PROFESSIONAL  
LAND SURVEYOR UNDER THE LAWS OF THE STATE OF IOWA.

SEAL COVERS THIS SHEET ONLY



*[Signature]* 12/9/2022  
Randall L. Rattenborg, P.L.S. License #17939 Date  
My license renewal date is December 31, 2023  
List Corners to be Indexed: Section Township Range  
E 1/4 CORNER 24 T 87N R 5 W  
SW CORNER SE 1/4 - NE 1/4

**BURRINGTON GROUP, INC.**  
Civil Engineering | Land Surveying  
105 W. Main Street Manchester, Iowa 52057