



Book 2022 Page 3233

Document 2022 3233 Type 06 007 Pages 1
Date 10/27/2022 Time 1:00:31PM
Rec Amt \$7.00

Daneen Schindler, RECORDER/REGISTRAR
DELAWARE COUNTY IOWA

PREPARED BY: RANDALL L. RATTENBORG 105 WEST MAIN STREET MANCHESTER, IA 52057, 563-927-2434

UNITED STATES PUBLIC LAND SURVEY CORNER CERTIFICATE

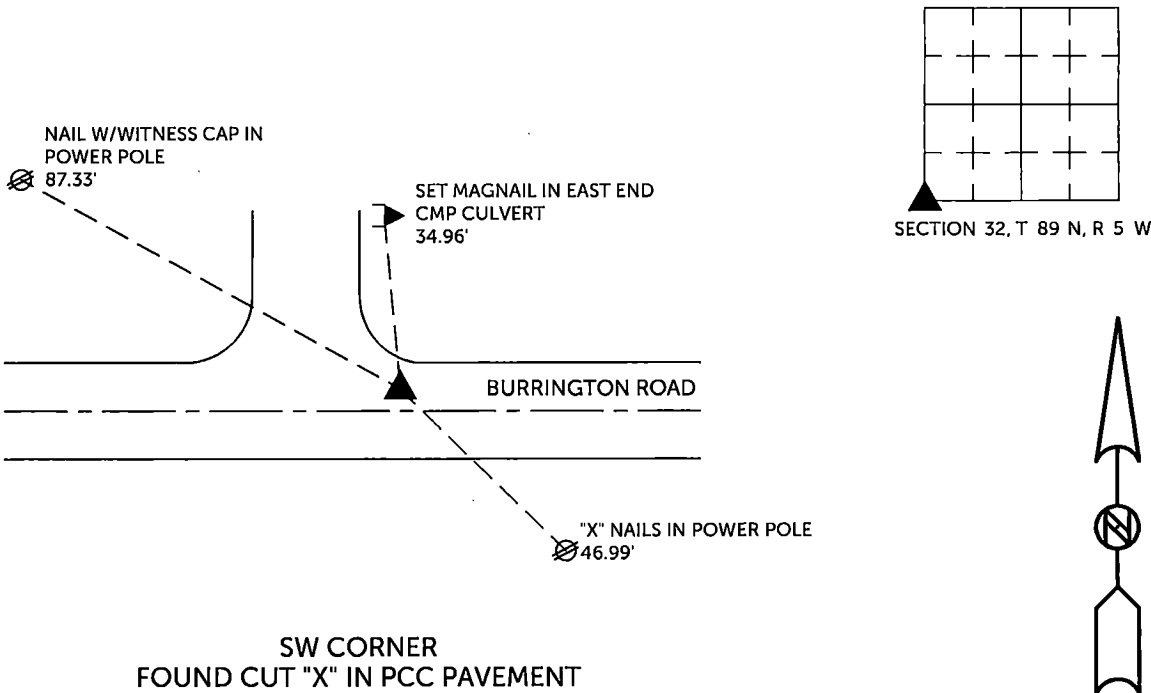
Land Survey Monuments situated in Section 32 , Township 89 North, Range 5 West of the Fifth Principal Meridian,
Delaware County, Iowa.

Previously recorded in County Recorder's Office in Book 2015, Page 2638
(book, page, document number, etc.)

SW CORNER, Found cut "X" in P.C.C. pavement. Corner Certificate being issued due to missing tie objects

PLAN VIEW

(Show a minimum of three reference ties to durable physical objects, relevant monuments and physical conditions that will enable recovery of the corner.)



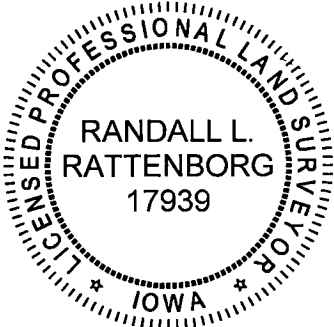
SW CORNER
FOUND CUT "X" IN PCC PAVEMENT

TIES ARE TO PLAT PARCEL 2022-129 & PARCEL 2022-130
IN SECTION 32, T 89 N, R 5 W

BURRINGTON GROUP, INC. PROJECT NO. 22-126

I HEREBY CERTIFY THAT THIS LAND SURVEYING DOCUMENT
WAS PREPARED AND THE RELATED SURVEY WORK WAS
PERFORMED BY ME OR UNDER MY DIRECT PERSONAL
SUPERVISION AND THAT I AM A DULY LICENSED PROFESSIONAL
LAND SURVEYOR UNDER THE LAWS OF THE STATE OF IOWA.

SEAL COVERS THIS SHEET ONLY



[Signature] 10/26/2022
Randall L. Rattenborg, P.L.S. License #17939 Date
My license renewal date is December 31, 2023
List Corners to be Indexed: Section Township Range
SW CORNER 32 T 89N R 5 W



BURRINGTON GROUP, INC.
Civil Engineering | Land Surveying
105 W. Main Street Manchester, Iowa 52057