



Book 2022 Page 3232

Document 2022 3232 Type 06 007 Pages 1  
Date 10/27/2022 Time 1:00:19PM  
Rec Amt \$7.00

Daneen Schindler, RECORDER/REGISTRAR  
DELAWARE COUNTY IOWA

PREPARED BY: RANDALL L. RATTENBORG 105 WEST MAIN STREET MANCHESTER, IA 52057, 563-927-2434

UNITED STATES PUBLIC LAND SURVEY CORNER CERTIFICATE

Land Survey Monuments situated in Section 6 , Township 88 North, Range 5 West of the Fifth Principal Meridian,  
Delaware County, Iowa.

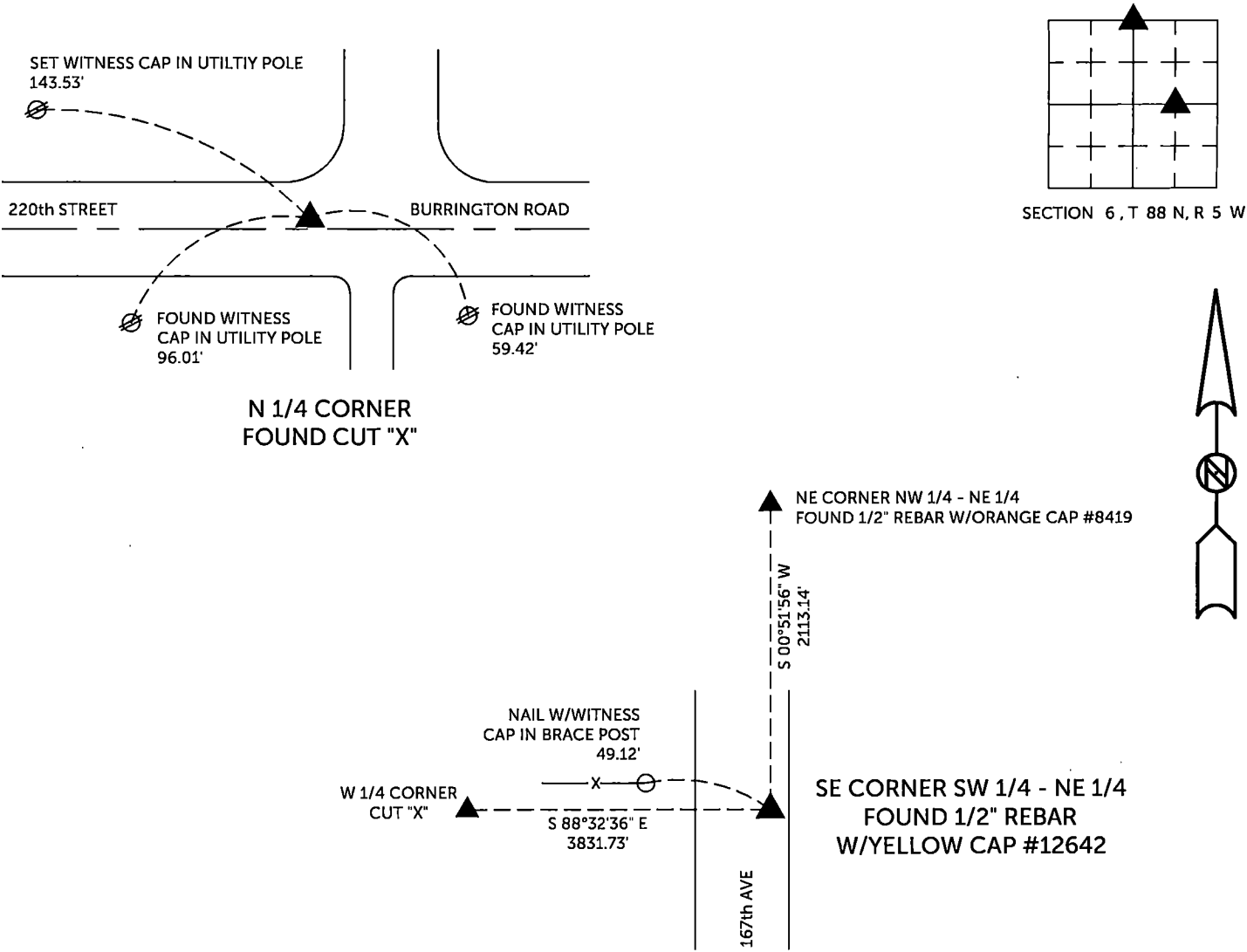
Previously recorded in County Recorder's Office in See Descriptions  
(book, page, document number, etc.)

SE CORNER SW 1/4 - NE 1/4, Found 1/2" rebar w/yellow cap # 12642 as per corner certificate recorded in Corner Certificate Book 2, Page 76. Corner Certificate being re-issued due to missing tie objects.

N 1/4 CORNER, Found Cut X in PCC Pavement. Originally recorded in Book 2016, Page 359. Corner Certificate being re-issued due to missing tie objects.

PLAN VIEW

(Show a minimum of three reference ties to durable physical objects, relevant monuments and physical conditions that will enable recovery of the corner.)



TIES ARE TO PLAT PARCEL 2022-129 & PARCEL 2022-130  
IN SECTION 6, T 88 N, R 5 W

BURRINGTON GROUP, INC. PROJECT NO. 22-126

I HEREBY CERTIFY THAT THIS LAND SURVEYING DOCUMENT  
WAS PREPARED AND THE RELATED SURVEY WORK WAS  
PERFORMED BY ME OR UNDER MY DIRECT PERSONAL  
SUPERVISION AND THAT I AM A DULY LICENSED PROFESSIONAL  
LAND SURVEYOR UNDER THE LAWS OF THE STATE OF IOWA.

	10/26/2022
Randall L. Rattenborg, P.L.S.	License #17939
My license renewal date is December 31, 2023	
List Corners to be Indexed:	Section Township Range
SE CORNER SW 1/4 - NE 1/4	6 T 88N R 5 W
N 1/4 CORNER	

SEAL COVERS THIS SHEET ONLY



BURRINGTON GROUP, INC.  
Civil Engineering | Land Surveying  
105 W. Main Street Manchester, Iowa 52057