

INDEX LEGEND

**Location:** SW1/4 SEC. 25, T89N, R4W; NW1/4 SEC. 25, T89N, R4W;  
SE1/4 SEC. 26, T89N, R4W; NE1/4 SEC. 26, T89N, R4W;  
NW1/4 SEC. 13, T89N, R4W; NE1/4 SEC. 14, T89N, R4W;  
SE1/4 SEC. 11, T89N, R4W; SW1/4 SEC. 12, T89N, R4W;  
SE1/4 SEC. 35, T90N, R4W; NE1/4 SEC. 35, T90N, R4W;  
SW1/4 SEC. 36, T90N, R4W; NW1/4 SEC. 36, T90N, R4W;

**Requestor:** Delaware County Engineer

**Survey Date:** 2-24-2022

**Surveyor:** Wyatt B. Anderson

**Surveyor Company:**

Delaware County Engineer's Office

**Return To:** Delaware County Engineer's Office, 2139 Highway 38, Manchester, IA 52057  
Phone 563-927-3505



Book 2022 Page 3078

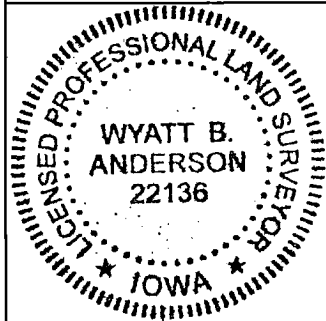
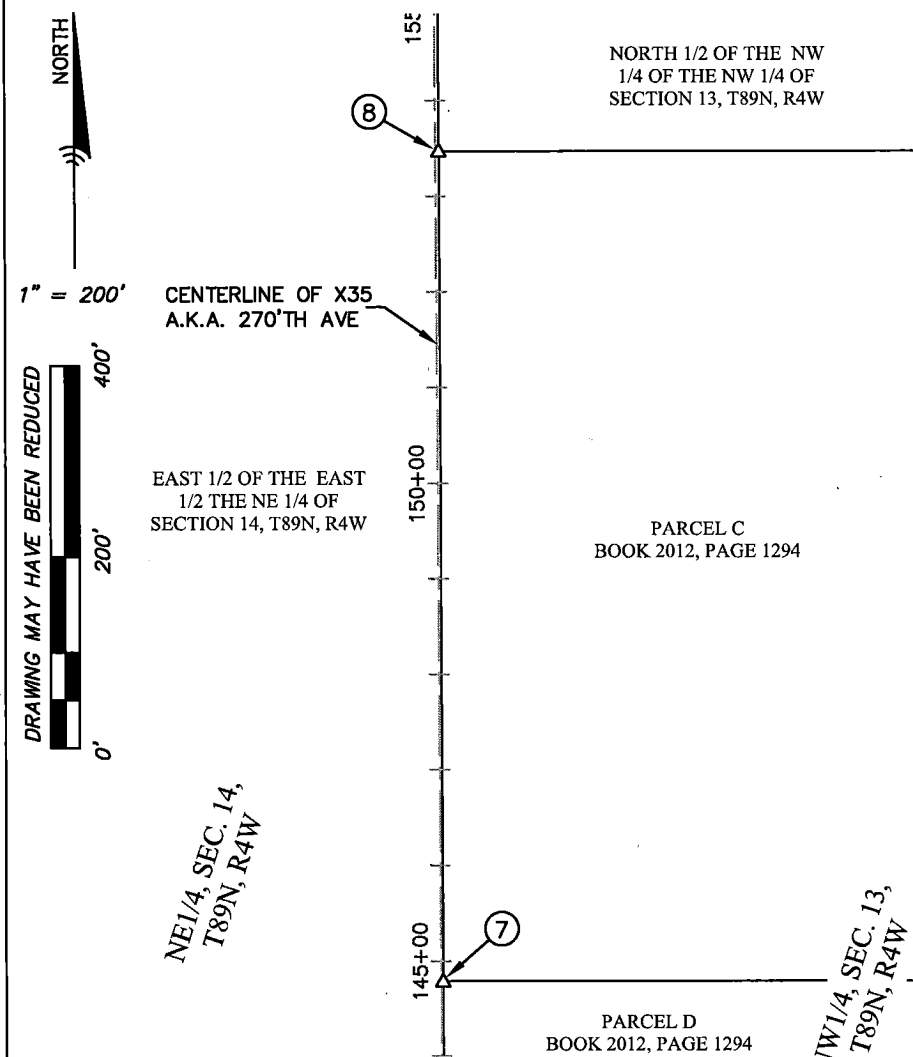
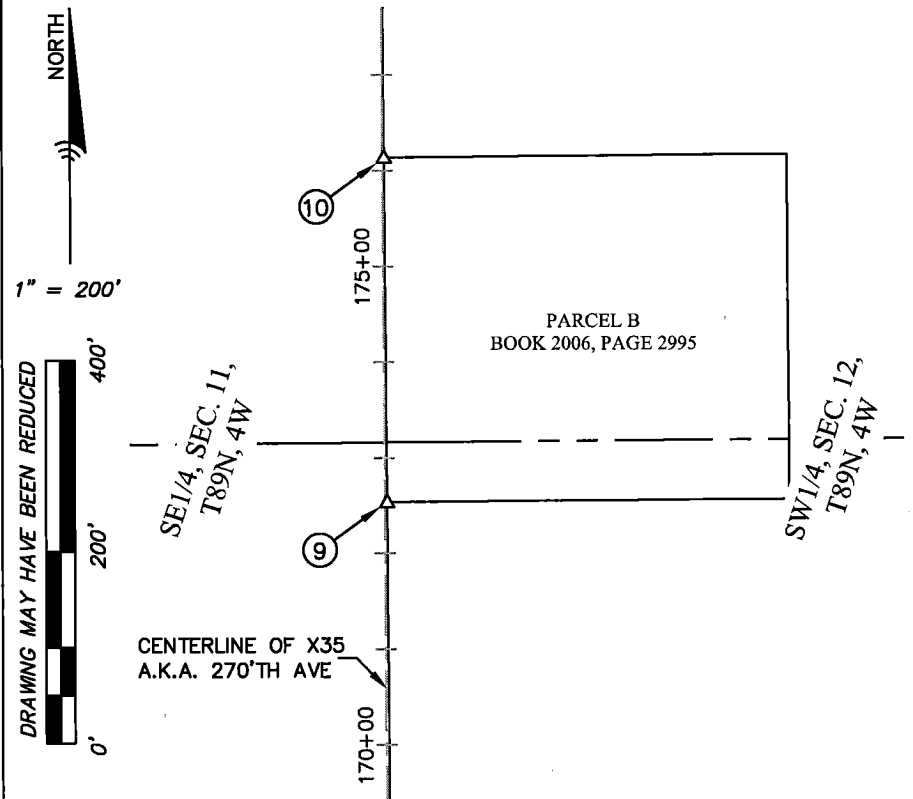
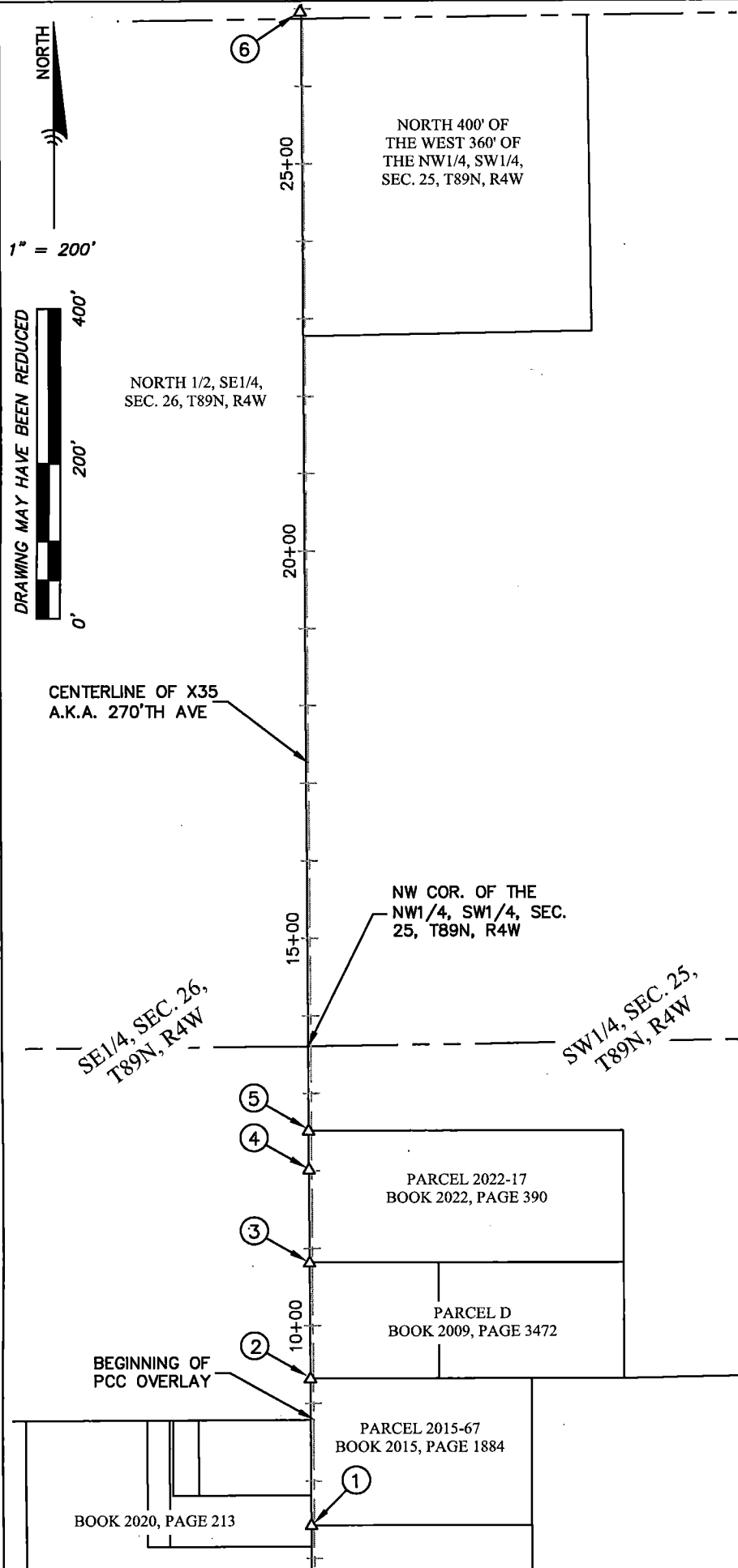
Document 2022 3078 Type 06 001 Pages 2  
Date 10/12/2022 Time 11:33:02AM  
Rec Amt \$.00

Daneen Schindler, RECORDER/REGISTRAR  
DELAWARE COUNTY IOWA

MONUMENT PRESERVATION CERTIFICATE

NOTES:

1. THIS MONUMENT PRESERVATION CERTIFICATE HAS BEEN PREPARED FOR THE COUNTY ROAD X35 (270<sup>TH</sup> AVENUE) PCC OVERLAY PROJECT (PROJECT NO. LOST-23(01)--73-28. THE EXISTING CONCRETE ROAD WAS OVERLAYED WITH APPROXIMATELY 6 INCHES OF NEW CONCRETE
2. THE HORIZONTAL GRID COORDINATES SHOWN ON THIS MONUMENT PRESERVATION CERTIFICATE HAVE BEEN BASED ON THE IOWA REGIONAL COORDINATE SYSTEM (IaRCS) ZONE 3, ELKADER. HORIZONTAL COORDINATES WERE DETERMINED USING RTK GPS REFERENCING THE IaRTN OPERATING WITH NAD83(2011) EPOCH 2010.00 REFERENCE STATION POSITIONS.



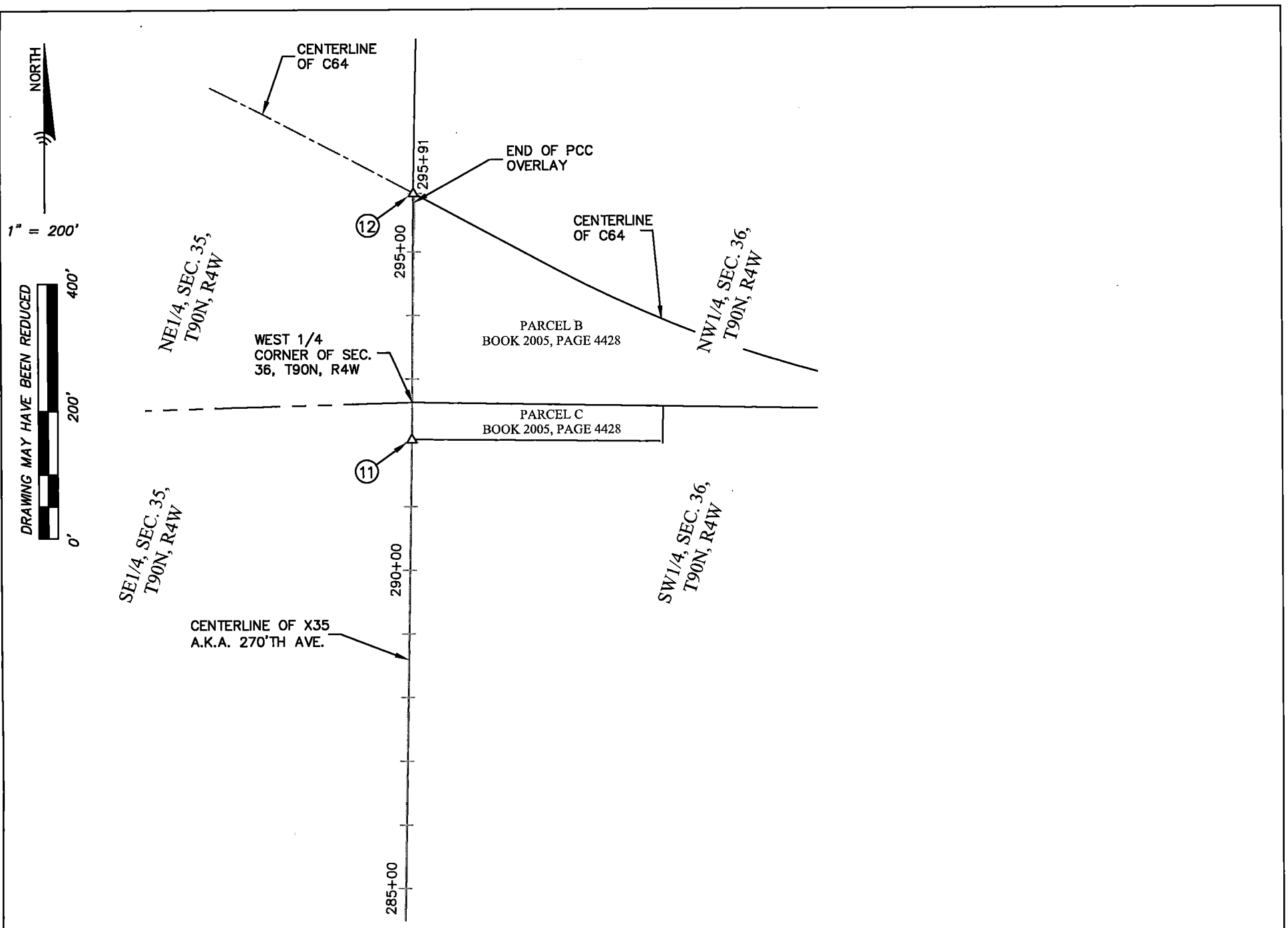
I HEREBY CERTIFY THAT THIS LAND SURVEYING DOCUMENT WAS PREPARED AND THE RELATED SURVEY WORK WAS PERFORMED BY ME OR UNDER MY DIRECT PERSONAL SUPERVISION AND THAT I AM A DULY LICENSED LAND SURVEYOR UNDER THE LAWS OF THE STATE OF IOWA.

*Wyatt B. Anderson* 10-4-2022  
DATE  
WYATT B. ANDERSON  
LICENSE NUMBER 22136  
MY LICENSE RENEWAL DATE IS DECEMBER 31, 2023  
SHEETS COVERED BY THIS SEAL : SHEET 1 OF 2

DELAWARE  
COUNTY  
ENGINEER'S  
OFFICE

2139 HIGHWAY 38  
MANCHESTER, IOWA 52057  
PHONE: (563) 927-3505  
SHEET 1 OF 2

DATE OF SURVEY: 2-24-2022  
CUT "X" MARKS: 10-3-2022  
DATE PREPARED: 10-4-2022



DESCRIPTION OF PRECONSTRUCTION AND POST CONSTRUCTION MONUMENT	GRID COORDINATES NORTHING / EASTING
① FOUND CUT "X" IN CONCRETE; STATION 7+42.83, 3.62' LT; NOT DISTURBED	9115278.12' / 13480453.57'
② FOUND CUT "X" IN CONCRETE; STATION 9+31.71, 3.46' LT; CUT "X" IN CONCRETE;	9115467.01' / 13480452.80'
③ FOUND CUT "X" IN CONCRETE; STATION 10+81.69, 3.38' LT; CUT "X" IN CONCRETE;	9115616.99' / 13480452.18'
④ FOUND CUT "X" IN CONCRETE; STATION 12+01.80, 3.39' LT; CUT "X" IN CONCRETE;	9115737.10' / 13480451.61'
⑤ FOUND CUT "X" IN CONCRETE; STATION 12+52.26, 3.38' LT; CUT "X" IN CONCRETE;	9115787.55' / 13480451.38'
⑥ FOUND CUT "X" IN CONCRETE; STATION 26+96.59, 3.06' LT; CUT "X" IN CONCRETE;	9117231.87' / 13480444.96'
⑦ FOUND MAG NAIL IN CONCRETE; STATION 144+78.75, 2.03' RT; CUT "X" IN CONCRETE;	9129013.27' / 13480348.02'
⑧ FOUND MAG NAIL IN CONCRETE; STATION 153+46.97, 3.52' RT; CUT "X" IN CONCRETE;	9129881.49' / 13480345.04'
⑨ FOUND CUT "X" IN CONCRETE; STATION 172+53.75, 2.50' RT; CUT "X" IN CONCRETE;	9131788.24' / 13480334.19'
⑩ FOUND CUT "X" IN CONCRETE; STATION 176+13.66, 1.87' RT; CUT "X" IN CONCRETE;	9132148.14' / 13480331.70'
⑪ FOUND CUT "X" IN CONCRETE; STATION 292+05.26, 0.32' RT; CUT "X" IN CONCRETE;	9143734.98' / 13480422.81'
⑫ FOUND MAG NAIL W/STEEL 1-1/4" DIA. WASHER IN CONCRETE; NOT DISTURBED	9144121.47' / 13480426.40'

WYATT B.  
ANDERSON  
22136

LICENSED PROFESSIONAL LAND SURVEYOR  
★ IOWA ★

I HEREBY CERTIFY THAT THIS LAND SURVEYING DOCUMENT WAS PREPARED AND THE RELATED SURVEY WORK WAS PERFORMED BY ME OR UNDER MY DIRECT PERSONAL SUPERVISION AND THAT I AM A DULY LICENSED LAND SURVEYOR UNDER THE LAWS OF THE STATE OF IOWA.

WYATT B. ANDERSON

LICENSE NUMBER 22136

MY LICENSE RENEWAL DATE IS DECEMBER 31, 2023

SHEETS COVERED BY THIS SEAL : SHEET 2 OF 2

DATE

10-4-2022

DELAWARE  
COUNTY  
ENGINEER'S  
OFFICE

2139 HIGHWAY 38  
MANCHESTER, IOWA 52057  
PHONE: (563) 927-3505

SHEET 2 OF 2

DATE OF SURVEY: 2-24-2022  
CUT "X" MARKS: 10-3-2022  
DATE PREPARED: 10-4-2022