



Book 2022 Page 3077

Document 2022 3077 Type 06 007 Pages 1
Date 10/12/2022 Time 11:32:40AM
Rec Amt \$.00

PREPARED BY: WYATT B. ANDERSON,
DELAWARE COUNTY ENGINEER'S OFFICE, 2139
HIGHWAY 38, MANCHESTER, IOWA 52057,
PH: 563-927-3505

Daneen Schindler, RECORDER/REGISTRAR
DELAWARE COUNTY IOWA

UNITED STATES PUBLIC LAND SURVEY CORNER CERTIFICATE OF

LAND SURVEY MONUMENTS SITUATED IN SECTION 36, TOWNSHIP 90 NORTH, RANGE 4 WEST OF THE FIFTH
PRINCIPAL MERIDIAN, DELAWARE COUNTY, IOWA.

PREVIOUSLY RECORDED IN 2005-4555 IN COUNTY RECORDER'S OFFICE.
(book, page, document number, etc.)

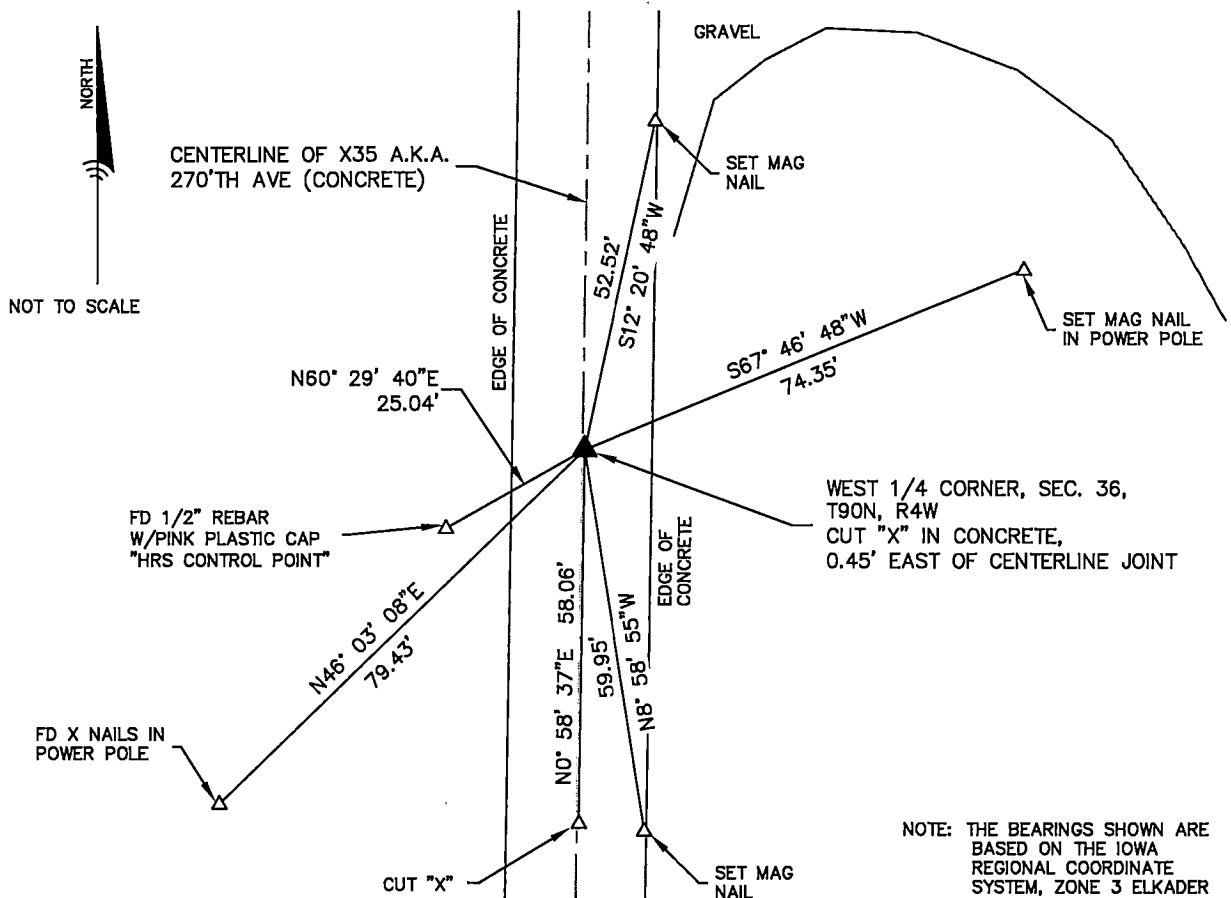
(Show reason for preparing this certificate, the evidence and detailed procedures used in establishing the
corner positions and monumentation found or placed.)

Monument Description and Remarks:

- FOUND A CUT "L" IN THE CONCRETE PAVEMENT AT THE WEST CORNER OF SECTION 36, T90N, R4W IN
THE LOCATION SHOWN ON A SURVEY RECORDED AS DOCUMENT 2005-4428. THE CONCRETE PAVEMENT
WAS OVERLAID WITH 6 INCHES OF NEW CONCRETE. I CUT A NEW "X" TO MARK THE CORNER.

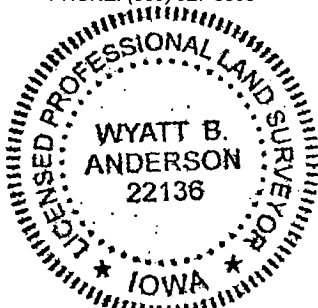
PLAN - VIEW

(Show a minimum of three reference ties to durable physical objects, relevant monuments and physical
conditions that will enable recovery of the corner.)



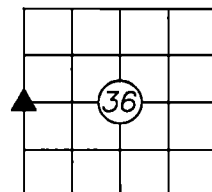
DELAWARE COUNTY ENGINEER'S OFFICE

2139 HIGHWAY 38
MANCHESTER, IOWA 52057
PHONE: (563) 927-3505



List Corners to be Indexed

Corners	Section	Twp	Range
WEST 1/4 CORNER	36	90N	4W



I HEREBY CERTIFY THAT THIS LAND SURVEYING DOCUMENT WAS PREPARED AND THE
RELATED SURVEY WORK WAS PERFORMED BY ME OR UNDER MY DIRECT PERSONAL
SUPERVISION AND THAT I AM A DULY LICENSED LAND SURVEYOR UNDER THE LAWS
OF THE STATE OF IOWA.

Wyatt B. Anderson 10-5-2022
DATE
WYATT B. ANDERSON
LICENSE NUMBER 22136
MY LICENSE RENEWAL DATE IS DECEMBER 31, 2023
SHEETS COVERED BY THIS SEAL: THIS SHEET ONLY