



Book 2022 Page 3076

Document 2022 3076 Type 06 007 Pages 1  
Date 10/12/2022 Time 11:32:35AM  
Rec Amt \$.00

Daneen Schindler, RECORDER/REGISTRAR  
DELAWARE COUNTY IOWA

PREPARED BY: WYATT B. ANDERSON,  
DELAWARE COUNTY ENGINEER'S OFFICE, 2139  
HIGHWAY 38, MANCHESTER, IOWA 52057,  
PH: 563-927-3505

**UNITED STATES PUBLIC LAND SURVEY CORNER CERTIFICATE  
OF**

LAND SURVEY MONUMENTS SITUATED IN SECTION 12, TOWNSHIP 89 NORTH, RANGE 4 WEST OF THE FIFTH  
PRINCIPAL MERIDIAN, DELAWARE COUNTY, IOWA.  
PREVIOUSLY RECORDED IN 2006-2994 AND BOOK 2, PAGE 136 IN COUNTY RECORDER'S  
OFFICE. (book, page, document number, etc.)

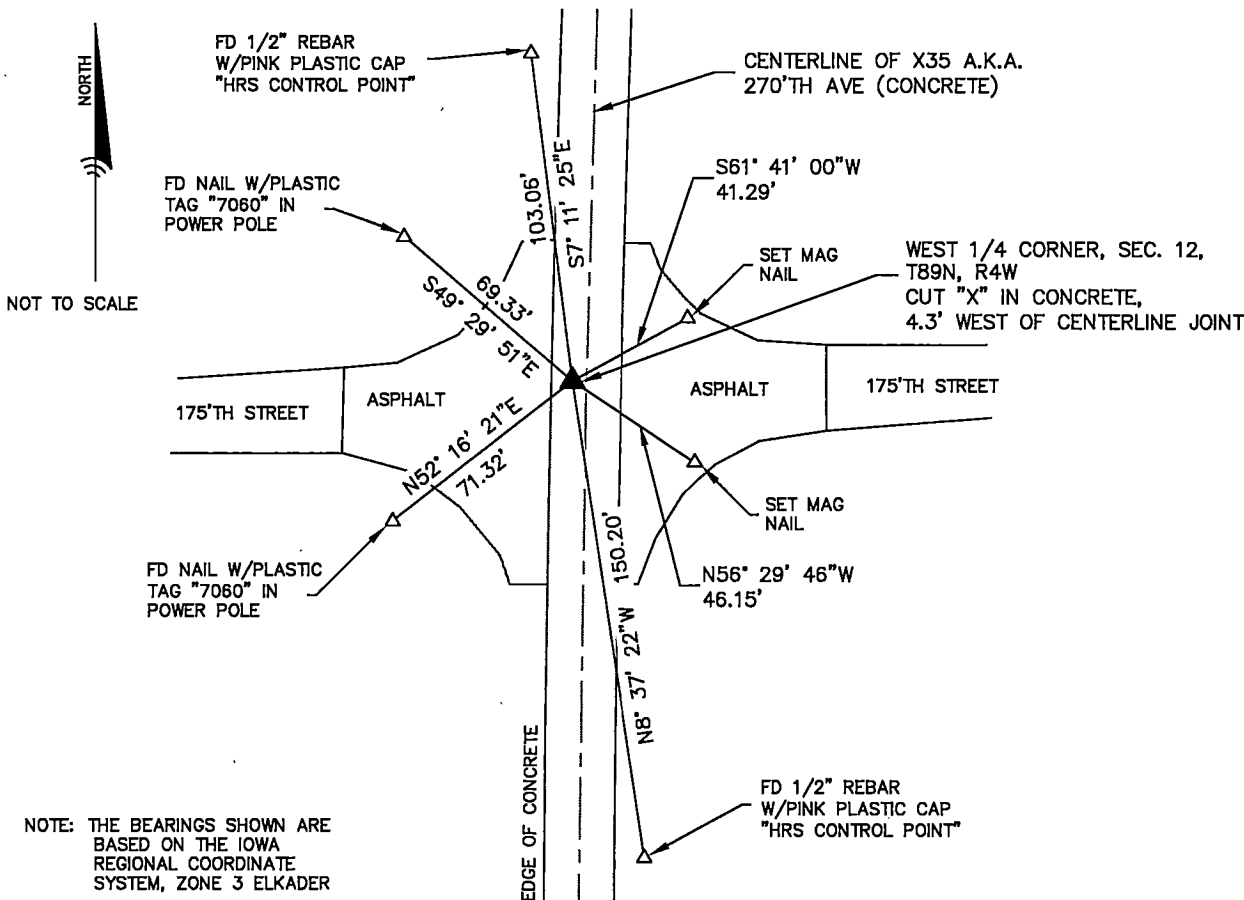
(Show reason for preparing this certificate, the evidence and detailed procedures used in establishing the  
corner positions and monumentation found or placed.)

Monument Description and Remarks:

- I FOUND A CUT "X" IN THE CONCRETE PAVEMENT AT THE WEST CORNER OF SECTION 12, T89N, R4W IN  
THE LOCATION SHOWN ON RECORDED CORNER CERTIFICATES. THE CONCRETE PAVEMENT WAS OVERLAID  
WITH 6 INCHES OF NEW CONCRETE. I CUT A NEW "X" TO MARK THE CORNER.

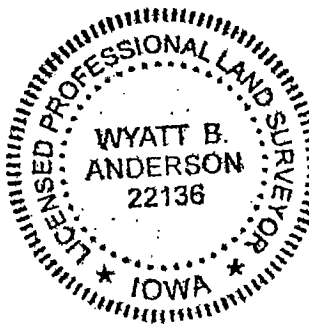
**PLAN - VIEW**

(Show a minimum of three reference ties to durable physical objects, relevant monuments and physical  
conditions that will enable recovery of the corner.)



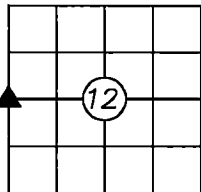
**DELAWARE COUNTY  
ENGINEER'S OFFICE**

2139 HIGHWAY 38  
MANCHESTER, IOWA 52057  
PHONE: (563) 927-3505



List Corners to be Indexed

Corners	Section	Twp	Range
WEST 1/4 CORNER	12	89N	4W



I HEREBY CERTIFY THAT THIS LAND SURVEYING DOCUMENT WAS PREPARED AND THE  
RELATED SURVEY WORK WAS PERFORMED BY ME OR UNDER MY DIRECT PERSONAL  
SUPERVISION AND THAT I AM A DULY LICENSED LAND SURVEYOR UNDER THE LAWS  
OF THE STATE OF IOWA.

*Wyatt B. Anderson* 10-5-2022  
DATE

WYATT B. ANDERSON  
LICENSE NUMBER 22136  
MY LICENSE RENEWAL DATE IS DECEMBER 31, 2023  
SHEETS COVERED BY THIS SEAL: THIS SHEET ONLY