



Book 2022 Page 3075

Document 2022 3075 Type 06 007 Pages 1
Date 10/12/2022 Time 11:32:29AM
Rec Amt \$.00

PREPARED BY: WYATT B. ANDERSON,
DELAWARE COUNTY ENGINEER'S OFFICE, 2139
HIGHWAY 38, MANCHESTER, IOWA 52057,
PH: 563-927-3505

Daneen Schindler, RECORDER/REGISTRAR
DELAWARE COUNTY IOWA

UNITED STATES PUBLIC LAND SURVEY CORNER CERTIFICATE
OF

LAND SURVEY MONUMENTS SITUATED IN SECTION 12, TOWNSHIP 89 NORTH, RANGE 4 WEST OF THE FIFTH
PRINCIPAL MERIDIAN, DELAWARE COUNTY, IOWA.
PREVIOUSLY RECORDED IN 2006-2994 IN COUNTY RECORDER'S OFFICE.
(book, page, document number, etc.)

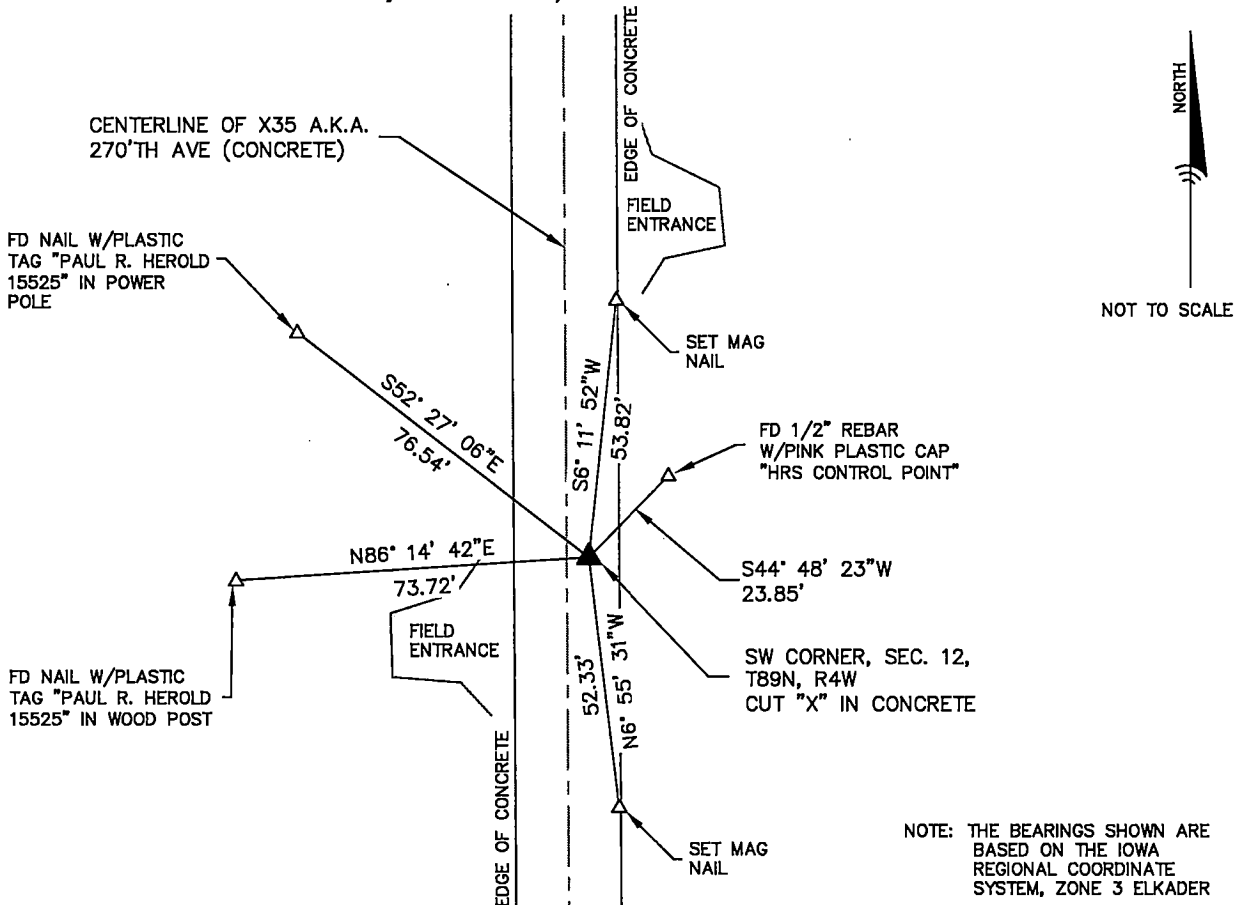
(Show reason for preparing this certificate, the evidence and detailed procedures used in establishing the
corner positions and monumentation found or placed.)

Monument Description and Remarks:

- I FOUND A CUT "X" IN THE CONCRETE PAVEMENT AT THE SW CORNER OF SECTION 12, T89N, R4W IN THE
LOCATION SHOWN ON A CORNER CERTIFICATE RECORDED IN 2006-2994. THE CONCRETE PAVEMENT WAS
OVERLAID WITH 6 INCHES OF NEW CONCRETE. I CUT A NEW "X" TO MARK THE CORNER.

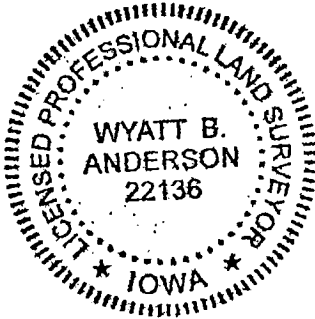
PLAN - VIEW

(Show a minimum of three reference ties to durable physical objects, relevant monuments and physical
conditions that will enable recovery of the corner.)



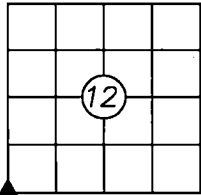
DELAWARE COUNTY
ENGINEER'S OFFICE

2139 HIGHWAY 38
MANCHESTER, IOWA 52057
PHONE: (563) 927-3505



List Corners to be Indexed

Corners	Section	Twp	Range
SW CORNER	12	89N	4W



I HEREBY CERTIFY THAT THIS LAND SURVEYING DOCUMENT WAS PREPARED AND THE
RELATED SURVEY WORK WAS PERFORMED BY ME OR UNDER MY DIRECT PERSONAL
SUPERVISION AND THAT I AM A DULY LICENSED LAND SURVEYOR UNDER THE LAWS
OF THE STATE OF IOWA.

Wyatt B. Anderson 10-5-2022

WYATT B. ANDERSON
LICENSE NUMBER 22136
MY LICENSE RENEWAL DATE IS DECEMBER 31, 2023
SHEETS COVERED BY THIS SEAL: THIS SHEET ONLY