



Book 2022 Page 3074

Document 2022 3074 Type 06 007 Pages 1  
Date 10/12/2022 Time 11:32:24AM  
Rec Amt \$.00

PREPARED BY: WYATT B. ANDERSON,  
DELAWARE COUNTY ENGINEER'S OFFICE, 2139  
HIGHWAY 38, MANCHESTER, IOWA 52057,  
PH: 563-927-3505

Daneen Schindler, RECORDER/REGISTRAR  
DELAWARE COUNTY IOWA

## UNITED STATES PUBLIC LAND SURVEY CORNER CERTIFICATE OF

LAND SURVEY MONUMENTS SITUATED IN SECTION 14, TOWNSHIP 89 NORTH, RANGE 4 WEST OF THE FIFTH  
PRINCIPAL MERIDIAN, DELAWARE COUNTY, IOWA.

PREVIOUSLY RECORDED IN 2004-1008 IN COUNTY RECORDER'S OFFICE.  
(book, page, document number, etc.)

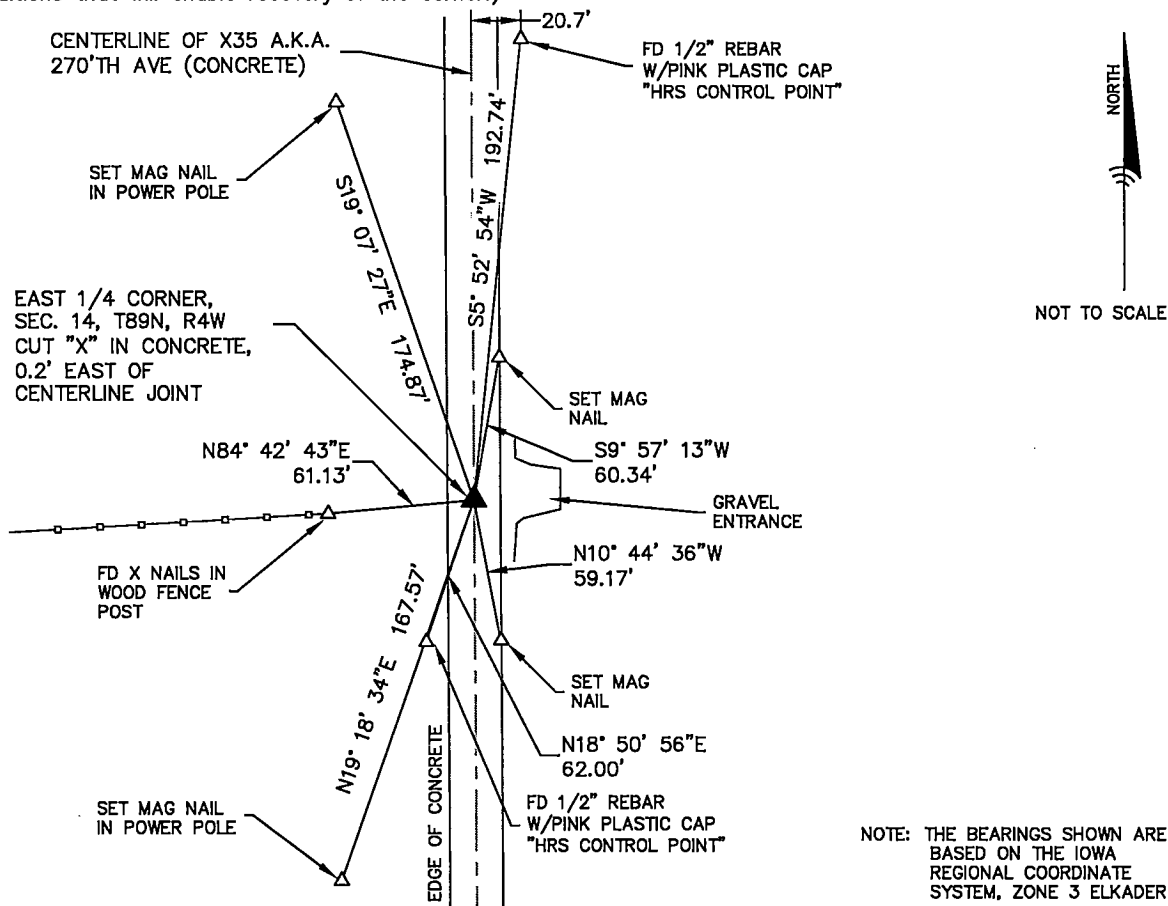
(Show reason for preparing this certificate, the evidence and detailed procedures used in establishing the  
corner positions and monumentation found or placed.)

### Monument Description and Remarks:

- FOUND A NAIL IN A CUT "X" IN THE CONCRETE PAVEMENT AT THE EAST 1/4 CORNER OF SECTION 14,  
T89N, R4W IN THE LOCATION SHOWN ON A CORNER CERTIFICATE RECORDED IN 2004-1008. THE CONCRETE  
PAVEMENT WAS OVERLAID WITH 6 INCHES OF NEW CONCRETE. I CUT A NEW "X" TO MARK THE CORNER.

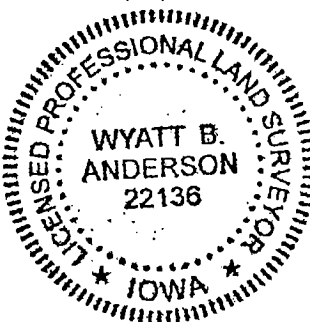
### PLAN - VIEW

(Show a minimum of three reference ties to durable physical objects, relevant monuments and physical  
conditions that will enable recovery of the corner.)



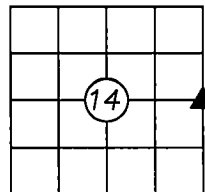
### DELAWARE COUNTY ENGINEER'S OFFICE

2139 HIGHWAY 38  
MANCHESTER, IOWA 52057  
PHONE: (563) 927-3505



### List Corners to be Indexed

Corners	Section	Twp	Range
EAST 1/4 CORNER	14	89N	4W



I HEREBY CERTIFY THAT THIS LAND SURVEYING DOCUMENT WAS PREPARED AND THE  
RELATED SURVEY WORK WAS PERFORMED BY ME OR UNDER MY DIRECT PERSONAL  
SUPERVISION AND THAT I AM A DULY LICENSED LAND SURVEYOR UNDER THE LAWS  
OF THE STATE OF IOWA.

*Wyatt B. Anderson* 10-5-2022  
DATE

WYATT B. ANDERSON  
LICENSE NUMBER 22136  
MY LICENSE RENEWAL DATE IS DECEMBER 31, 2023  
SHEETS COVERED BY THIS SEAL: THIS SHEET ONLY