



Book 2022 Page 3072

Document 2022 3072 Type 06 007 Pages 1  
Date 10/12/2022 Time 11:32:14AM  
Rec Amt \$.00

PREPARED BY: WYATT B. ANDERSON,  
DELAWARE COUNTY ENGINEER'S OFFICE, 2139  
HIGHWAY 38, MANCHESTER, IOWA 52057,  
PH: 563-927-3505

Daneen Schindler, RECORDER/REGISTRAR  
DELAWARE COUNTY IOWA

**UNITED STATES PUBLIC LAND SURVEY CORNER CERTIFICATE  
OF**

LAND SURVEY MONUMENTS SITUATED IN SECTION 24, TOWNSHIP 89 NORTH, RANGE 4 WEST OF THE FIFTH  
PRINCIPAL MERIDIAN, DELAWARE COUNTY, IOWA.

PREVIOUSLY RECORDED IN BOOK 2, PAGE 18 IN COUNTY RECORDER'S OFFICE.  
(book, page, document number, etc.)

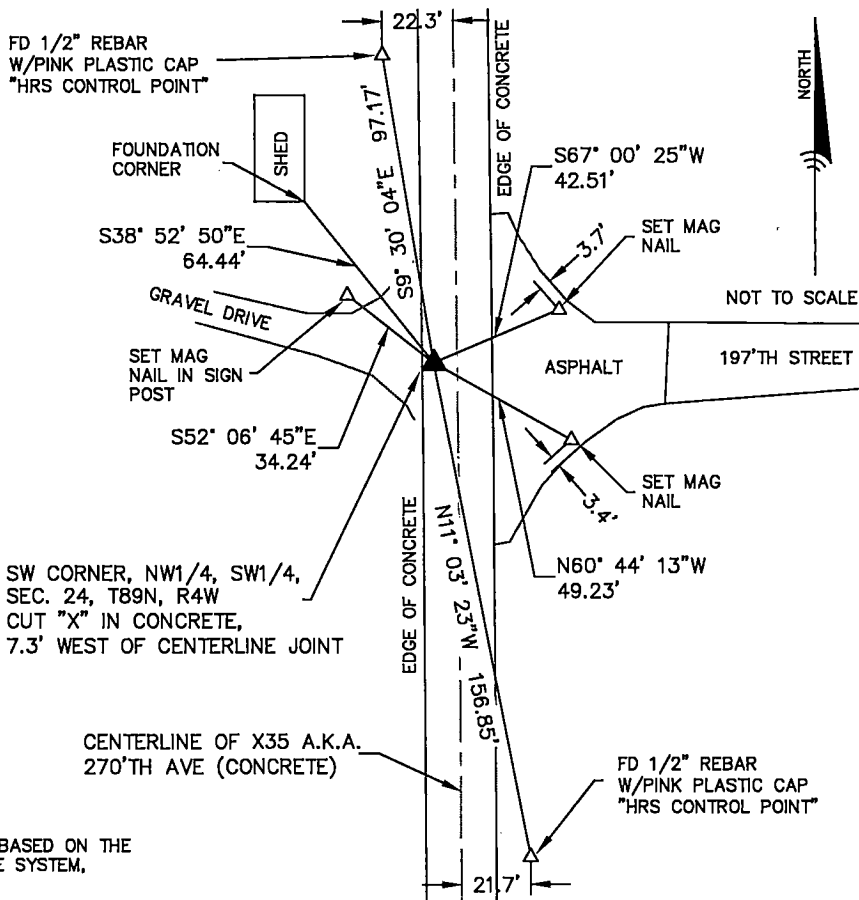
(Show reason for preparing this certificate, the evidence and detailed procedures used in establishing the  
corner positions and monumentation found or placed.)

Monument Description and Remarks:

- I FOUND A P.K. NAIL IN THE CONCRETE PAVEMENT AT THE SW CORNER, NW1/4, SW1/4, SECTION 24, T89N,  
R4W IN THE LOCATION SHOWN ON A CORNER CERTIFICATE RECORDED IN BOOK 2, PAGE 18. THE CONCRETE  
PAVEMENT WAS OVERLAID WITH 6 INCHES OF NEW CONCRETE. I CUT A NEW "X" TO MARK THE CORNER.

**PLAN - VIEW**

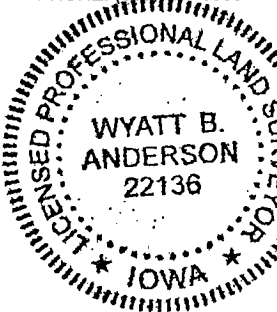
(Show a minimum of three reference ties to durable physical objects, relevant monuments and physical  
conditions that will enable recovery of the corner.)



NOTE: THE BEARINGS SHOWN ARE BASED ON THE  
IOWA REGIONAL COORDINATE SYSTEM,  
ZONE 3 ELKADER

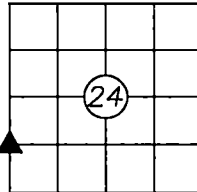
**DELAWARE COUNTY  
ENGINEER'S OFFICE**

2139 HIGHWAY 38  
MANCHESTER, IOWA 52057  
PHONE: (563) 927-3505



**List Corners to be Indexed**

Corners	Section	Twp	Range
SW CORNER NW1/4, SW1/4	24	89N	4W



I HEREBY CERTIFY THAT THIS LAND SURVEYING DOCUMENT WAS PREPARED AND THE  
RELATED SURVEY WORK WAS PERFORMED BY ME OR UNDER MY DIRECT PERSONAL  
SUPERVISION AND THAT I AM A DULY LICENSED LAND SURVEYOR UNDER THE LAWS  
OF THE STATE OF IOWA.

*Wyatt B. Anderson* 10-5-2022  
DATE

WYATT B. ANDERSON  
LICENSE NUMBER 22136  
MY LICENSE RENEWAL DATE IS DECEMBER 31, 2023  
SHEETS COVERED BY THIS SEAL: THIS SHEET ONLY