



Book 2022 Page 3071

Document 2022 3071 Type 06 007 Pages 1

Date 10/12/2022 Time 11:32:07AM

Rec Amt \$.00

Daneen Schindler, RECORDER/REGISTRAR
DELAWARE COUNTY IOWA

PREPARED BY: WYATT B. ANDERSON,
DELAWARE COUNTY ENGINEER'S OFFICE, 2139
HIGHWAY 38, MANCHESTER, IOWA 52057,
PH: 563-927-3505

UNITED STATES PUBLIC LAND SURVEY CORNER CERTIFICATE OF

LAND SURVEY MONUMENTS SITUATED IN SECTION 25, TOWNSHIP 89 NORTH, RANGE 4 WEST OF THE FIFTH
PRINCIPAL MERIDIAN, DELAWARE COUNTY, IOWA.

PREVIOUSLY RECORDED IN 2009-3473 IN COUNTY RECORDER'S OFFICE.
(book, page, document number, etc.)

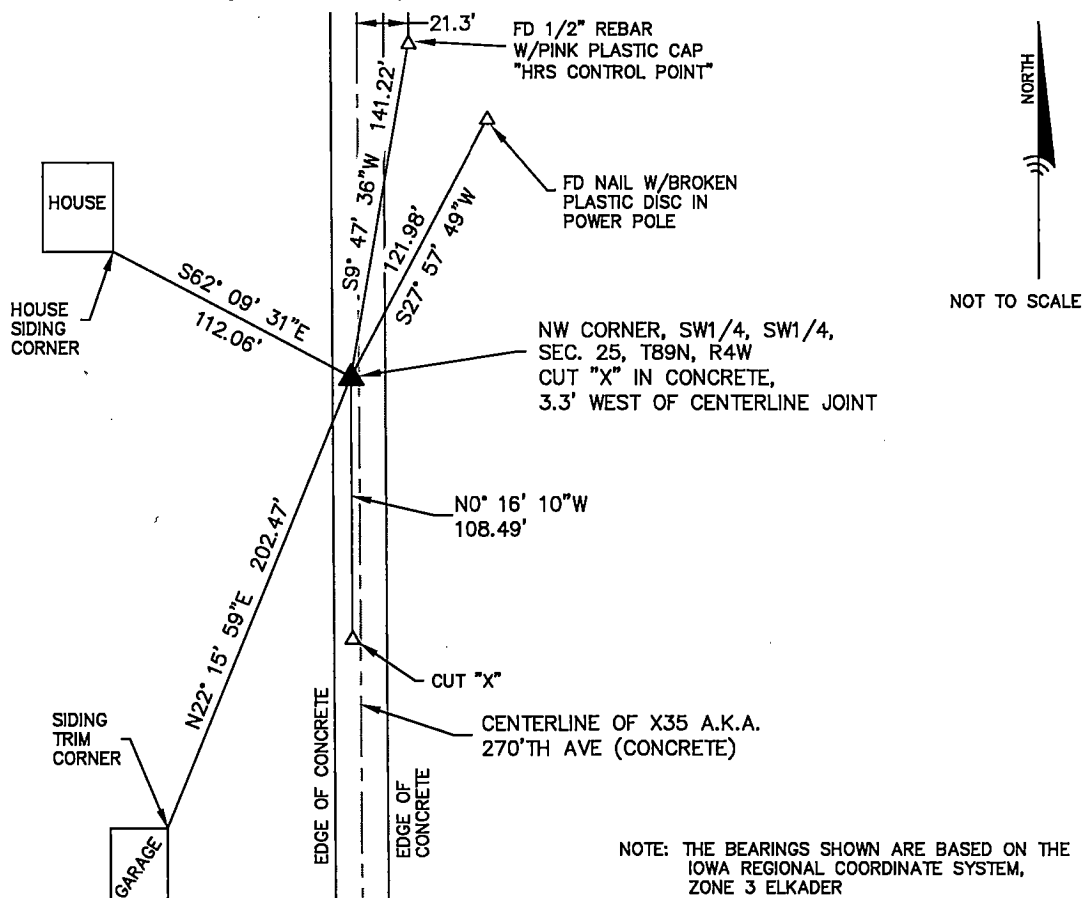
(Show reason for preparing this certificate, the evidence and detailed procedures used in establishing the
corner positions and monumentation found or placed.)

Monument Description and Remarks:

- FOUND A CUT "X" IN THE CONCRETE PAVEMENT AT THE NW CORNER, SW1/4, SW1/4, SECTION 25, T89N, R4W. THE CONCRETE PAVEMENT WAS OVERLAID WITH 6 INCHES OF NEW CONCRETE. I CUT A NEW "X" TO MARK THE CORNER. THIS CORNER LOCATION HAS BEEN USED FOR SEVERAL RECORDED SURVEYS

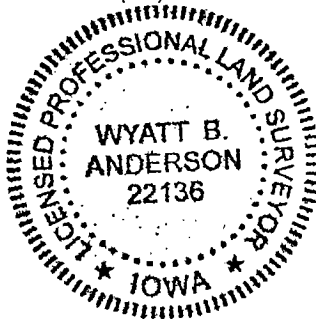
PLAN - VIEW

(Show a minimum of three reference ties to durable physical objects, relevant monuments and physical
conditions that will enable recovery of the corner.)



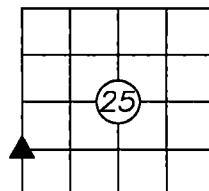
DELAWARE COUNTY ENGINEER'S OFFICE

2139 HIGHWAY 38
MANCHESTER, IOWA 52057
PHONE: (563) 927-3505



List Corners to be Indexed

Corners	Section	Twp	Range
NW CORNER SW1/4, SW1/4	25	89N	4W



I HEREBY CERTIFY THAT THIS LAND SURVEYING DOCUMENT WAS PREPARED AND THE
RELATED SURVEY WORK WAS PERFORMED BY ME OR UNDER MY DIRECT PERSONAL
SUPERVISION AND THAT I AM A DULY LICENSED LAND SURVEYOR UNDER THE LAWS
OF THE STATE OF IOWA.

Wyatt B. Anderson 10-5-2022
WYATT B. ANDERSON
LICENSE NUMBER 22136
MY LICENSE RENEWAL DATE IS DECEMBER 31, 2023
SHEETS COVERED BY THIS SEAL: THIS SHEET ONLY