



Daneen Schindler, RECORDER/REGISTRAR
DELAWARE COUNTY IOWA

PREPARED BY: WYATT B. ANDERSON,
DELAWARE COUNTY ENGINEER'S OFFICE, 2139
HIGHWAY 38, MANCHESTER, IOWA 52057,
PH: 563-927-3505

**UNITED STATES PUBLIC LAND SURVEY CORNER CERTIFICATE
OF**

LAND SURVEY MONUMENTS SITUATED IN SECTION 27, TOWNSHIP 87 NORTH, RANGE 3 WEST OF THE FIFTH
PRINCIPAL MERIDIAN, DELAWARE COUNTY, IOWA.
PREVIOUSLY RECORDED IN 2006-2558 AND 1-288 IN COUNTY RECORDER'S OFFICE.
(book, page, document number, etc.)

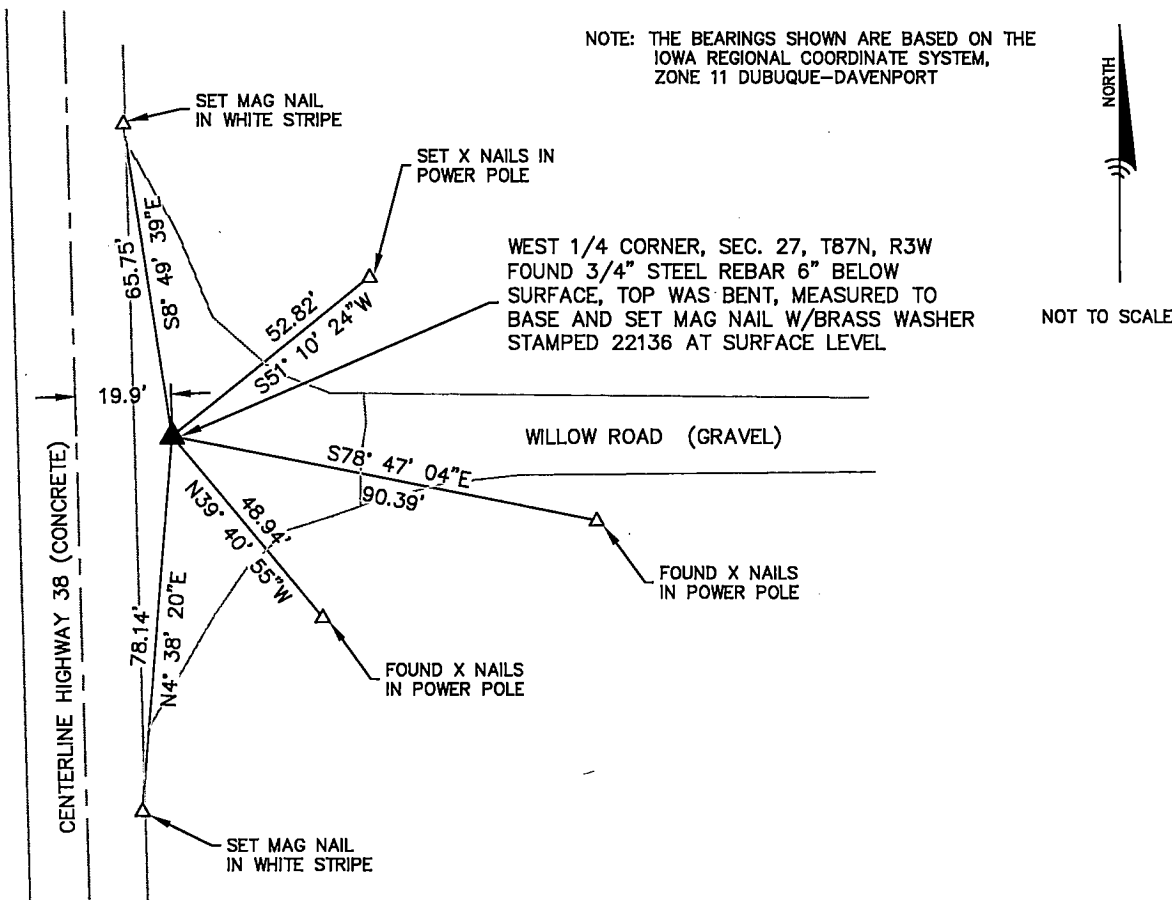
(Show reason for preparing this certificate, the evidence and detailed procedures used in establishing the
corner positions and monumentation found or placed.)

Monument Description and Remarks:

- I FOUND A 3/4" STEEL REBAR 6" BELOW THE SURFACE AT THE WEST 1/4 CORNER OF SECTION 27, T87N, R3W. THE TOP WAS BENT. I MEASURED TO THE BASE OF THE REBAR TO RETRACE ITS ORIGINAL LOCATION. THE LOCATION MATCHED THE LOCATION SHOWN IN PREVIOUSLY RECORDED CORNER CERTIFICATES. I HAVE SET A MAG NAIL WITH A BRASS WASHER STAMPED 22136 AT SURFACE LEVEL DIRECTLY ABOVE THE MEASURED LOCATION. THERE WERE ONLY TWO REMAINING REFERENCE TIES THAT APPEAR TO NOT HAVE BEEN DISTURBED.

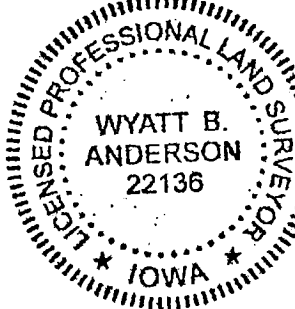
PLAN - VIEW

(Show a minimum of three reference ties to durable physical objects, relevant monuments and physical conditions that will enable recovery of the corner.)



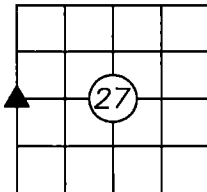
**DELAWARE COUNTY
ENGINEER'S OFFICE**

2139 HIGHWAY 38
MANCHESTER, IOWA 52057
PHONE: (563) 927-3505



List Corners to be Indexed

Corners	Section	Twp	Range
WEST 1/4 CORNER	27	87N	3W



I HEREBY CERTIFY THAT THIS LAND SURVEYING DOCUMENT WAS PREPARED AND THE
RELATED SURVEY WORK WAS PERFORMED BY ME OR UNDER MY DIRECT PERSONAL
SUPERVISION AND THAT I AM A DULY LICENSED LAND SURVEYOR UNDER THE LAWS
OF THE STATE OF IOWA.

Wyatt B. Anderson 10-10-2022
WYATT B. ANDERSON
LICENSE NUMBER 22136
DATE

MY LICENSE RENEWAL DATE IS DECEMBER 31, 2023
SHEETS COVERED BY THIS SEAL: THIS SHEET ONLY