



Daneen Schindler, RECORDER/REGISTRAR
DELAWARE COUNTY IOWA

PREPARED BY: RANDALL L. RATTENBORG 105 WEST MAIN STREET MANCHESTER, IA 52057, 563-927-2434

UNITED STATES PUBLIC LAND SURVEY CORNER CERTIFICATE

Land Survey Monuments situated in Section 18 , Township 89 North, Range 5 West of the Fifth Principal Meridian,
Delaware County, Iowa.

Previously recorded in County Recorder's Office in SEE DESCRIPTIONS
(book, page, document number, etc.)

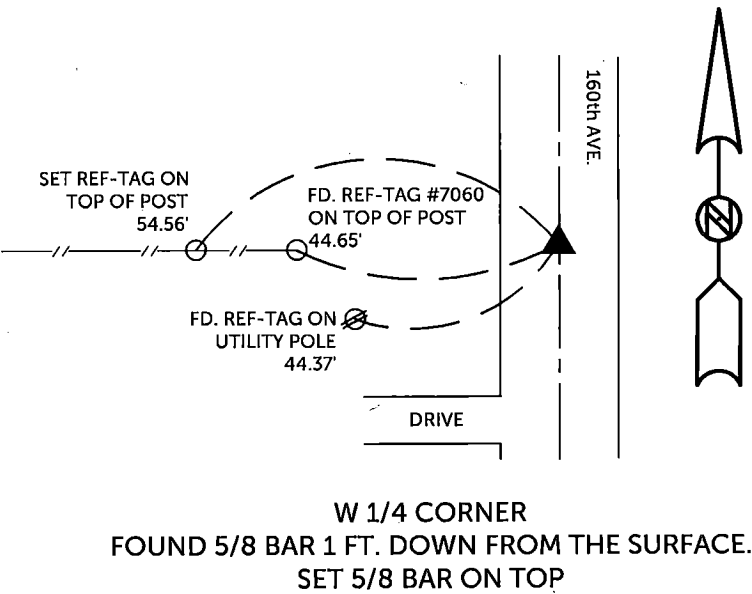
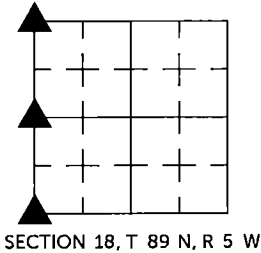
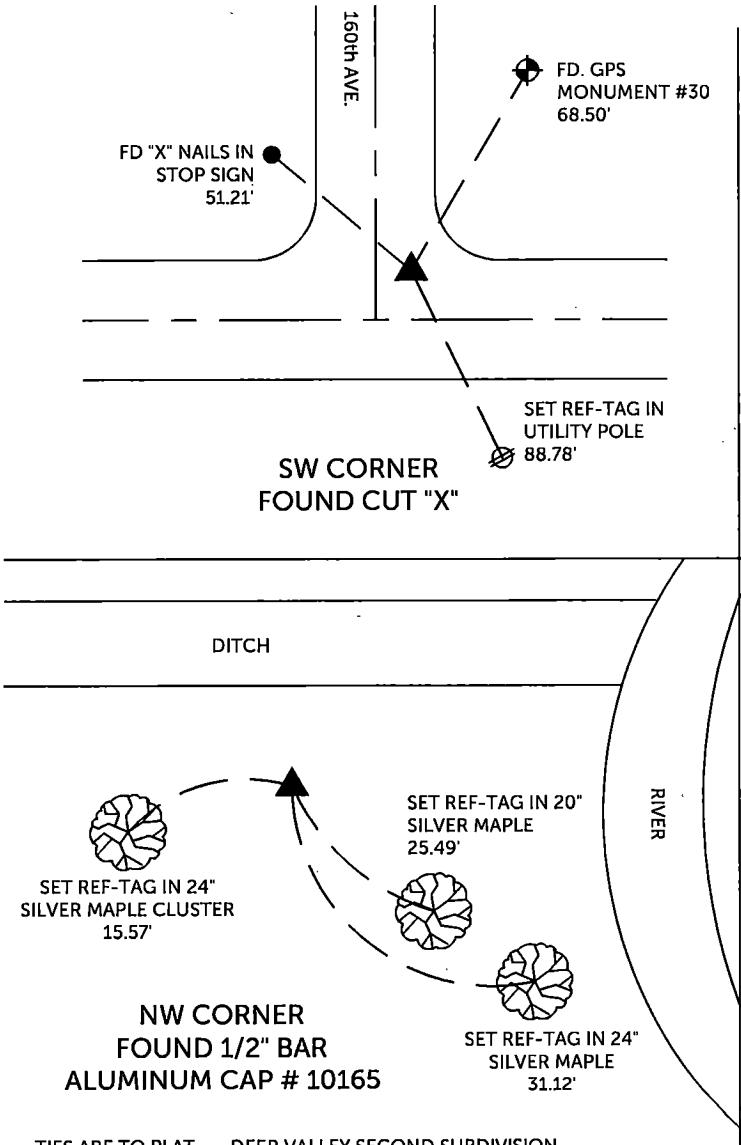
NW CORNER, Found 1/2" rebar w/aluminum cap #10165 using geometry from Subdivision Plat of Deer Valley Subdivision. This monument was at the geometric location. Did not find 5/8" epoxy coated rebar as per Corner Certificate recorded in Corner Tie Book 1, Page 122.

W 1/4 CORNER, Found 5/8" iron rod 12" below gravel surface as per Corner Certificate recorded in Corner Tie Book 1, Page 120. Set new 5/8" bar above.

SW CORNER, Found cut "X".

PLAN VIEW

(Show a minimum of three reference ties to durable physical objects, relevant monuments and physical conditions that will enable recovery of the corner.)

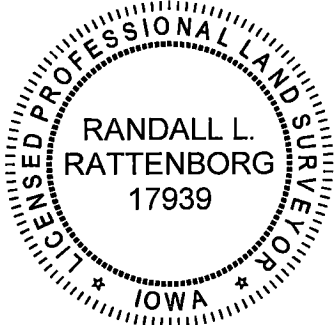


TIES ARE TO PLAT DEER VALLEY SECOND SUBDIVISION
IN SECTION 18, T 89 N, R 5 W

BURRINGTON GROUP, INC. PROJECT NO. 22-084

I HEREBY CERTIFY THAT THIS LAND SURVEYING DOCUMENT
WAS PREPARED AND THE RELATED SURVEY WORK WAS
PERFORMED BY ME OR UNDER MY DIRECT PERSONAL
SUPERVISION AND THAT I AM A DULY LICENSED PROFESSIONAL
LAND SURVEYOR UNDER THE LAWS OF THE STATE OF IOWA.

SEAL COVERS THIS SHEET ONLY



[Signature]
Randall L. Rattenborg, P.L.S. License #17939 Date 10/10/2022
My license renewal date is December 31, 2023
List Corners to be Indexed: Section Township Range
SW CORNER 18 T 89N R 5 W
W 1/4 CORNER
NW CORNER



BURRINGTON GROUP, INC.
Civil Engineering | Land Surveying
105 W. Main Street Manchester, Iowa 52057